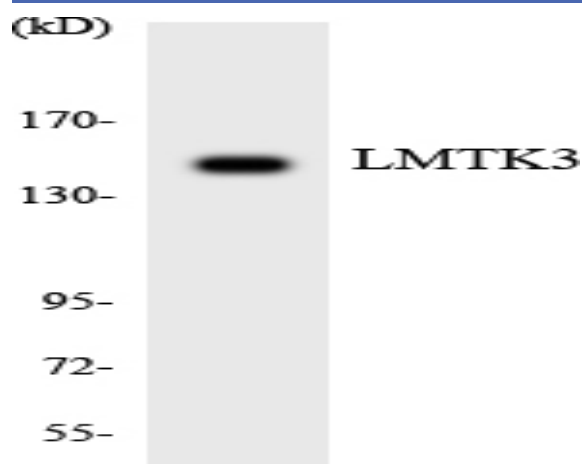


LMTK3 Polyclonal Antibody

Catalog No :	YT2576
Reactivity :	Human;Mouse
Applications :	WB;IHC;IF;ELISA
Target :	LMTK3
Gene Name :	LMTK3
Protein Name :	Serine/threonine-protein kinase LMTK3
Human Gene Id :	114783
Human Swiss Prot No :	Q96Q04
Mouse Gene Id :	381983
Mouse Swiss Prot No :	Q5XJV6
Immunogen :	The antiserum was produced against synthesized peptide derived from human LMTK3. AA range:1251-1300
Specificity :	LMTK3 Polyclonal Antibody detects endogenous levels of LMTK3 protein.
Formulation :	Liquid in PBS containing 50% glycerol, 0.5% BSA and 0.02% sodium azide.
Source :	Polyclonal, Rabbit,IgG
Dilution :	WB 1:500 - 1:2000. IHC 1:100 - 1:300. ELISA: 1:20000.. IF 1:50-200
Purification :	The antibody was affinity-purified from rabbit antiserum by affinity-chromatography using epitope-specific immunogen.
Concentration :	1 mg/ml
Storage Stability :	-15°C to -25°C/1 year(Do not lower than -25°C)

Observed Band :	153kD
Background :	catalytic activity:ATP + a protein = ADP + a phosphoprotein.,similarity:Belongs to the protein kinase superfamily. Tyr protein kinase family.,similarity:Contains 1 protein kinase domain.,
Function :	catalytic activity:ATP + a protein = ADP + a phosphoprotein.,similarity:Belongs to the protein kinase superfamily. Tyr protein kinase family.,similarity:Contains 1 protein kinase domain.,
Subcellular Location :	Membrane ; Single-pass membrane protein . Cell projection, axon . Cell projection, dendrite . Golgi apparatus membrane . Punctate pattern in cell projections.
Expression :	Brain,
Sort :	9218
No4 :	1
Host :	Rabbit
Modifications :	Unmodified

Products Images



Western blot analysis of the lysates from HeLa cells using LMTK3 antibody.