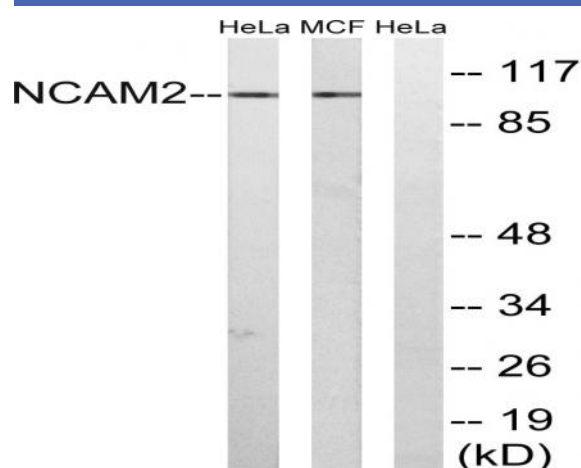


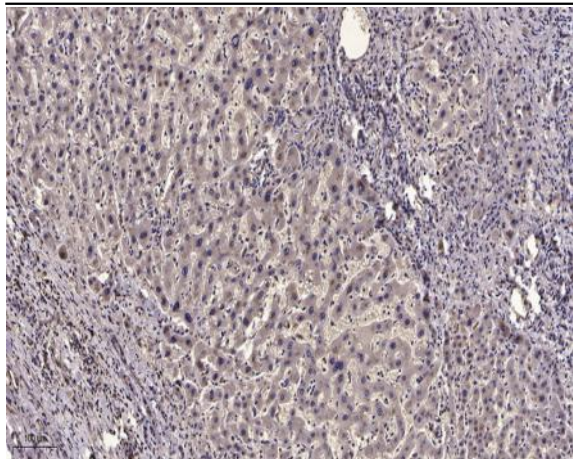
NCAM2 Polyclonal Antibody

| | |
|------------------------------|---|
| Catalog No : | YT2989 |
| Reactivity : | Human;Mouse;Rat |
| Applications : | WB;IHC |
| Target : | NCAM2 |
| Fields : | >>Cell adhesion molecules;>>Prion disease |
| Gene Name : | NCAM2 |
| Protein Name : | Neural cell adhesion molecule 2 |
| Human Gene Id : | 4685 |
| Human Swiss Prot No : | O15394 |
| Mouse Gene Id : | 17968 |
| Mouse Swiss Prot No : | O35136 |
| Immunogen : | The antiserum was produced against synthesized peptide derived from human NCAM2. AA range:264-313 |
| Specificity : | NCAM2 Polyclonal Antibody detects endogenous levels of NCAM2 protein. |
| Formulation : | Liquid in PBS containing 50% glycerol, 0.5% BSA and 0.02% sodium azide. |
| Source : | Polyclonal, Rabbit,IgG |
| Dilution : | WB 1:500-2000;IHC 1:50-300 |
| Purification : | The antibody was affinity-purified from rabbit antiserum by affinity-chromatography using epitope-specific immunogen. |
| Concentration : | 1 mg/ml |

| | |
|-------------------------------|---|
| Storage Stability : | -15°C to -25°C/1 year(Do not lower than -25°C) |
| Observed Band : | 100kD |
| Cell Pathway : | Cell adhesion molecules (CAMs);Prion diseases; |
| Background : | The protein encoded by this gene belongs to the immunoglobulin superfamily. It is a type I membrane protein and may function in selective fasciculation and zone-to-zone projection of the primary olfactory axons. [provided by RefSeq, Jul 2008], |
| Function : | function:May play important roles in selective fasciculation and zone-to-zone projection of the primary olfactory axons.,similarity:Contains 2 fibronectin type-III domains.,similarity:Contains 5 Ig-like C2-type (immunoglobulin-like) domains.,tissue specificity:Expressed most strongly in adult and fetal brain., |
| Subcellular Location : | Cell membrane; Single-pass type I membrane protein. |
| Expression : | Expressed most strongly in adult and fetal brain. |
| Sort : | 10600 |
| Host : | Rabbit |
| Modifications : | Unmodified |

Products Images





Immunohistochemical analysis of paraffin-embedded human liver cancer. 1, Antibody was diluted at 1:200(4° overnight). 2, Tris-EDTA,pH9.0 was used for antigen retrieval. 3,Secondary antibody was diluted at 1:200(room temperature, 45min).