

LIR-6 Polyclonal Antibody

Catalog No :	YT2569
Reactivity :	Human
Applications :	WB;IHC
Target :	LIR-6
Fields :	>>Osteoclast differentiation;>>B cell receptor signaling pathway
Gene Name :	LILRA1
Protein Name :	Leukocyte immunoglobulin-like receptor subfamily A member 1
Human Gene Id :	11024
Human Swiss Prot No :	O75019
Immunogen :	The antiserum was produced against synthesized peptide derived from human LILRA1. AA range:53-102
Specificity :	LIR-6 Polyclonal Antibody detects endogenous levels of LIR-6 protein.
Formulation :	Liquid in PBS containing 50% glycerol, 0.5% BSA and 0.02% sodium azide.
Source :	Polyclonal, Rabbit,IgG
Dilution :	WB 1:500-2000;IHC 1:50-300
Purification :	The antibody was affinity-purified from rabbit antiserum by affinity-chromatography using epitope-specific immunogen.
Concentration :	1 mg/ml
Storage Stability :	-15°C to -25°C/1 year(Do not lower than -25°C)
Observed Band :	53kD

Background : This gene encodes an activating member of the leukocyte immunoglobulin-like receptor (LIR) family, which is found in a gene cluster at chromosomal region 19q13.4. The encoded protein is predominantly expressed in B cells, interacts with major histocompatibility complex class I ligands, and contributes to the regulation of immune responses. Alternative splicing results in multiple transcript variants encoding different isoforms. [provided by RefSeq, May 2013],

Function : function:May act as receptor for class I MHC antigens.,similarity:Contains 4 Ig-like C2-type (immunoglobulin-like) domains.,tissue specificity:Detected in monocytes and B-cells.,

Subcellular Location : Membrane; Single-pass type I membrane protein.

Expression : Detected in monocytes and B-cells.

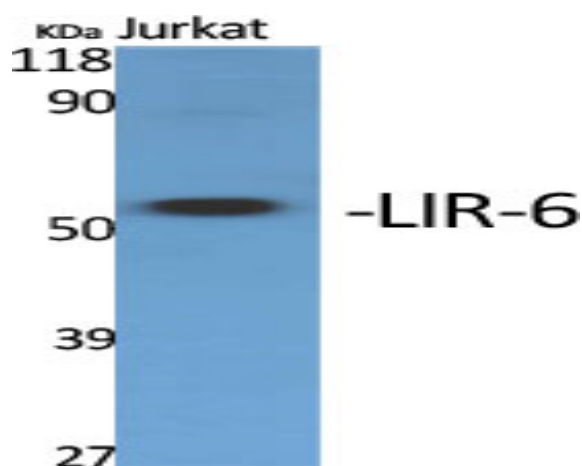
Sort : 9203

No4 : 1

Host : Rabbit

Modifications : Unmodified

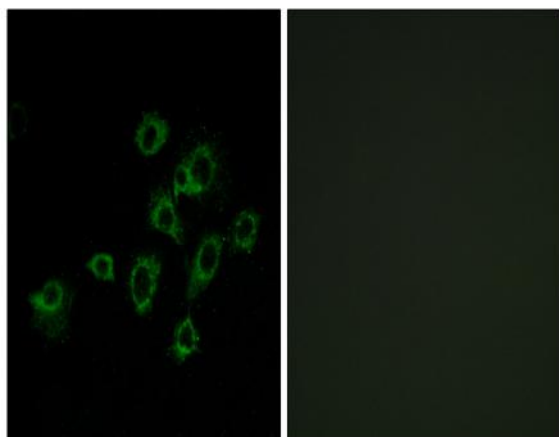
Products Images



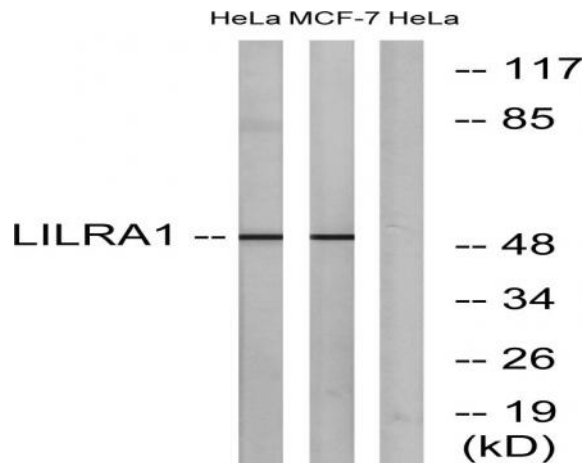
Western Blot analysis of various cells using LIR-6 Polyclonal Antibody



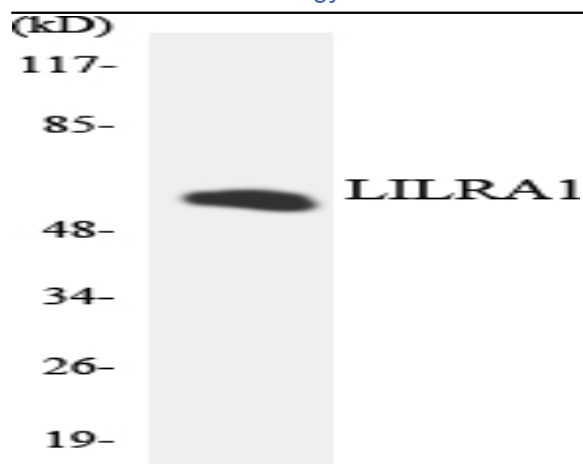
Western Blot analysis of MCF7 cells using LIR-6 Polyclonal Antibody



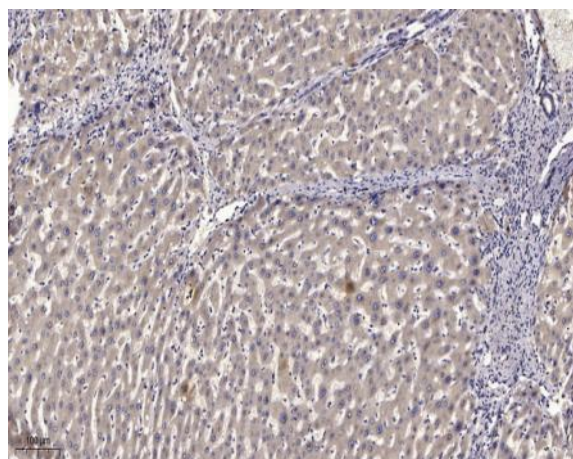
Immunofluorescence analysis of A549 cells, using LILRA1 Antibody. The picture on the right is blocked with the synthesized peptide.



Western blot analysis of lysates from HeLa and MCF-7 cells, using LILRA1 Antibody. The lane on the right is blocked with the synthesized peptide.



Western blot analysis of the lysates from HeLa cells using LILRA1 antibody.



Immunohistochemical analysis of paraffin-embedded human liver cancer. 1, Antibody was diluted at 1:200(4° overnight). 2, Tris-EDTA,pH9.0 was used for antigen retrieval. 3,Secondary antibody was diluted at 1:200(room temperature, 45min).