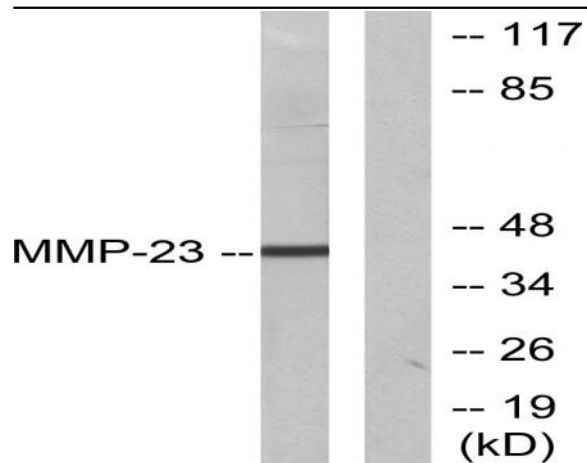


MMP-23 Polyclonal Antibody

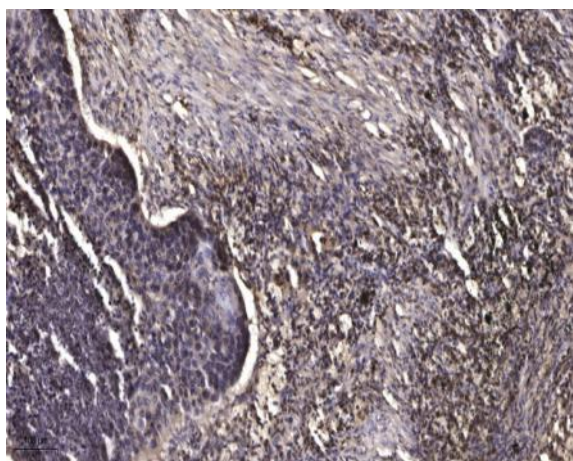
Catalog No :	YT2799
Reactivity :	Human;Mouse;Rat
Applications :	WB;ELISA;IHC
Target :	MMP-23
Gene Name :	MMP23B
Protein Name :	Matrix metalloproteinase-23
Human Gene Id :	8510
Human Swiss Prot No :	O75900
Mouse Gene Id :	26561
Mouse Swiss Prot No :	O88676
Rat Gene Id :	94339
Rat Swiss Prot No :	O88272
Immunogen :	The antiserum was produced against synthesized peptide derived from human MMP-23. AA range:341-390
Specificity :	MMP-23 Polyclonal Antibody detects endogenous levels of MMP-23 protein.
Formulation :	Liquid in PBS containing 50% glycerol, 0.5% BSA and 0.02% sodium azide.
Source :	Polyclonal, Rabbit,IgG
Dilution :	WB 1:500-2000;IHC 1:50-300; ELISA 2000-20000
Purification :	The antibody was affinity-purified from rabbit antiserum by affinity-chromatography using epitope-specific immunogen.

Concentration :	1 mg/ml
Storage Stability :	-15°C to -25°C/1 year(Do not lower than -25°C)
Observed Band :	44kD
Cell Pathway :	Angiogenesis
Background :	This gene (MMP23B) encodes a member of the matrix metalloproteinase (MMP) family, and it is part of a duplicated region of chromosome 1p36.3. Proteins of the matrix metalloproteinase (MMP) family are involved in the breakdown of extracellular matrix in normal physiological processes, such as embryonic development, reproduction, and tissue remodeling, as well as in disease processes, such as arthritis and metastasis. This gene belongs to the more telomeric copy of the duplicated region. [provided by RefSeq, Jul 2008],
Function :	cofactor: Binds 1 zinc ion per subunit., enzyme regulation: Inhibited by TIMP2., function: Protease., PTM: N-glycosylated., PTM: Proteolytic cleavage might yield an active form., similarity: Belongs to the peptidase M10A family., similarity: Contains 1 Ig-like C2-type (immunoglobulin-like) domain., subcellular location: A secreted form produced by proteolytic cleavage seems also to exist., tissue specificity: Predominantly expressed in ovary, testis and prostate.,
Subcellular Location :	Endoplasmic reticulum membrane ; Single-pass type II membrane protein . Membrane ; Single-pass type II membrane protein . A secreted form produced by proteolytic cleavage may also exist. .
Expression :	Predominantly expressed in ovary, testis and prostate.
Sort :	9709
No4 :	1
Host :	Rabbit
Modifications :	Unmodified

Products Images



Western blot analysis of lysates from SKOV3 cells, using MMP-23 Antibody. The lane on the right is blocked with the synthesized peptide.



Immunohistochemical analysis of paraffin-embedded human Squamous cell carcinoma of lung. 1, Antibody was diluted at 1:200(4° overnight). 2, Tris-EDTA,pH9.0 was used for antigen retrieval. 3,Secondary antibody was diluted at 1:200(room temperature, 45min).