

## Latherin Polyclonal Antibody

<b>Catalog No :</b>	YT2540
<b>Reactivity :</b>	Human
<b>Applications :</b>	IHC;IF;ELISA
<b>Target :</b>	Latherin
<b>Gene Name :</b>	LATH
<b>Protein Name :</b>	Putative latherin
<b>Human Gene Id :</b>	607627
<b>Human Swiss Prot No :</b>	Q86YQ2
<b>Immunogen :</b>	The antiserum was produced against synthesized peptide derived from human LATH. AA range:71-120
<b>Specificity :</b>	Latherin Polyclonal Antibody detects endogenous levels of Latherin protein.
<b>Formulation :</b>	Liquid in PBS containing 50% glycerol, 0.5% BSA and 0.02% sodium azide.
<b>Source :</b>	Polyclonal, Rabbit,IgG
<b>Dilution :</b>	IHC 1:100 - 1:300. IF 1:200 - 1:1000. ELISA: 1:20000. Not yet tested in other applications.
<b>Purification :</b>	The antibody was affinity-purified from rabbit antiserum by affinity-chromatography using epitope-specific immunogen.
<b>Concentration :</b>	1 mg/ml
<b>Storage Stability :</b>	-15°C to -25°C/1 year(Do not lower than -25°C)
<b>Observed Band :</b>	19kD
<b>Background :</b>	LATH, also named as BASE, belongs to the BPI/LBP/Plunc superfamily and

---

Plunc family. It is the major protein in sweat, has surfactant properties.

---

**Subcellular Location :**

Secreted.

---

**Expression :**

Expressed in breast cancer and salivary gland.

---

**Sort :**

9131

---

**No4 :**

1

---

**Host :**

Rabbit

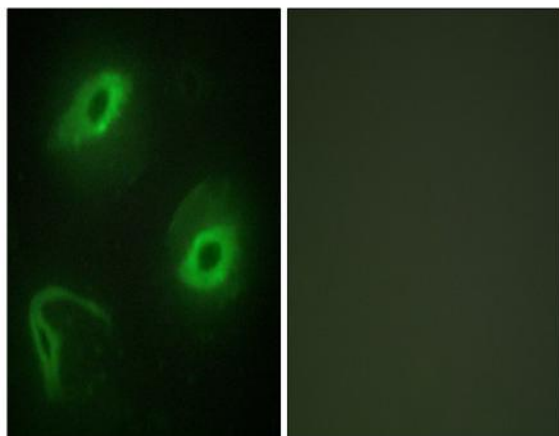
---

**Modifications :**

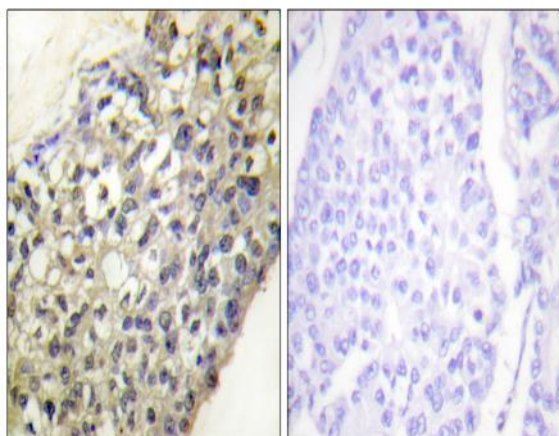
Unmodified

---

## Products Images



Immunofluorescence analysis of HeLa cells, using LATH Antibody. The picture on the right is blocked with the synthesized peptide.



Immunohistochemistry analysis of paraffin-embedded human breast carcinoma tissue, using LATH Antibody. The picture on the right is blocked with the synthesized peptide.