

MLK2 Polyclonal Antibody

Catalog No :	YT2785
Reactivity :	Human;Mouse
Applications :	IHC;IF;ELISA
Target :	MLK2
Fields :	>>Huntington disease;>>Pathways of neurodegeneration - multiple diseases
Gene Name :	MAP3K10
Protein Name :	Mitogen-activated protein kinase kinase kinase 10
Human Gene Id :	4294
Human Swiss Prot No :	Q02779
Mouse Swiss Prot No :	Q66L42
Immunogen :	The antiserum was produced against synthesized peptide derived from human MAP3K10. AA range:391-440
Specificity :	MLK2 Polyclonal Antibody detects endogenous levels of MLK2 protein.
Formulation :	Liquid in PBS containing 50% glycerol, 0.5% BSA and 0.02% sodium azide.
Source :	Polyclonal, Rabbit,IgG
Dilution :	IHC 1:100 - 1:300. ELISA: 1:20000.. IF 1:50-200
Purification :	The antibody was affinity-purified from rabbit antiserum by affinity-chromatography using epitope-specific immunogen.
Concentration :	1 mg/ml
Storage Stability :	-15°C to -25°C/1 year(Do not lower than -25°C)

Molecularweight : 104kD

Cell Pathway : SAPK_JNK

Background : The protein encoded by this gene is a member of the serine/threonine kinase family. This kinase has been shown to activate MAPK8/JNK and MKK4/SEK1, and this kinase itself can be phosphorylated, and thus activated by JNK kinases. This kinase functions preferentially on the JNK signaling pathway, and is reported to be involved in nerve growth factor (NGF) induced neuronal apoptosis. [provided by RefSeq, Jul 2008],

Function : catalytic activity:ATP + a protein = ADP + a phosphoprotein.,cofactor:Magnesium.,enzyme regulation:Homodimerization via the leucine zipper domains is required for autophosphorylation and subsequent activation.,function:Activates the JUN N-terminal pathway.,PTM:Autophosphorylation on serine and threonine residues within the activation loop plays a role in enzyme activation.,similarity:Belongs to the protein kinase superfamily. STE Ser/Thr protein kinase family. MAP kinase kinase kinase subfamily.,similarity:Contains 1 protein kinase domain.,similarity:Contains 1 SH3 domain.,subunit:Homodimer.,tissue specificity:Expressed in brain and skeletal muscle.,

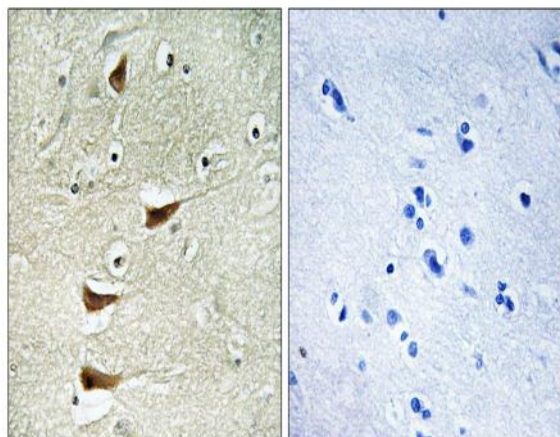
Subcellular Location : intracellular,cytoplasm,

Expression : Expressed in brain and skeletal muscle.

Sort : 9681

No4 : 1

Products Images



Immunohistochemistry analysis of paraffin-embedded human brain tissue, using MAP3K10 Antibody. The picture on the right is blocked with the synthesized peptide.