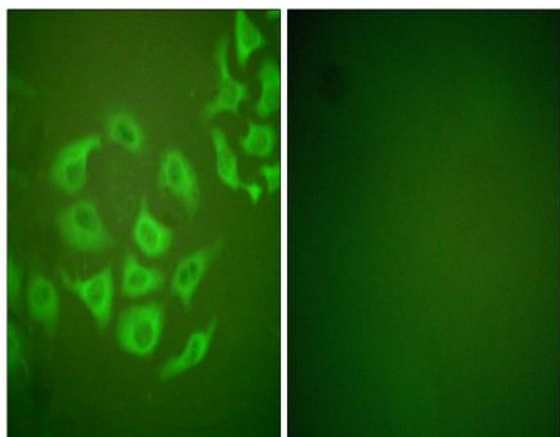


MMP-10 Polyclonal Antibody

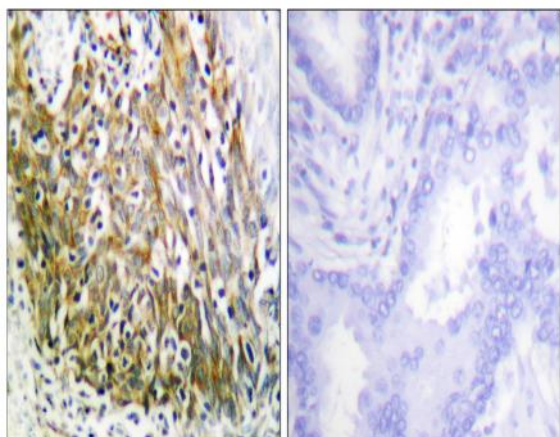
Catalog No :	YT2793
Reactivity :	Human;Mouse;Rat
Applications :	IHC;IF;WB;ELISA
Target :	MMP-10
Gene Name :	MMP10
Protein Name :	Stromelysin-2
Human Gene Id :	4319
Human Swiss Prot No :	P09238
Mouse Gene Id :	17384
Mouse Swiss Prot No :	O55123
Rat Gene Id :	117061
Rat Swiss Prot No :	P07152
Immunogen :	The antiserum was produced against synthesized peptide derived from human MMP-10. AA range:361-410
Specificity :	MMP-10 Polyclonal Antibody detects endogenous levels of MMP-10 protein.
Formulation :	Liquid in PBS containing 50% glycerol, 0.5% BSA and 0.02% sodium azide.
Source :	Polyclonal, Rabbit,IgG
Dilution :	WB 1:500-2000 IHC 1:100 - 1:300. IF 1:200 - 1:1000. ELISA: 1:40000. Not yet tested in other applications.
Purification :	The antibody was affinity-purified from rabbit antiserum by affinity-chromatography using epitope-specific immunogen.

Concentration :	1 mg/ml
Storage Stability :	-15°C to -25°C/1 year(Do not lower than -25°C)
Observed Band :	54kD
Cell Pathway :	Angiogenesis
Background :	<p>This gene encodes a member of the peptidase M10 family of matrix metalloproteinases (MMPs). Proteins in this family are involved in the breakdown of extracellular matrix in normal physiological processes, such as embryonic development, reproduction, and tissue remodeling, as well as in disease processes, such as arthritis and metastasis. The encoded preproprotein is proteolytically processed to generate the mature protease. This secreted protease breaks down fibronectin, laminin, elastin, proteoglycan core protein, gelatins, and several types of collagen. The gene is part of a cluster of MMP genes on chromosome 11. [provided by RefSeq, Jan 2016],</p>
Function :	<p>catalytic activity:Similar to stromelysin 1, but action on collagen types III, IV and V is weak.,cofactor:Binds 2 zinc ions per subunit.,cofactor:Calcium.,domain:The conserved cysteine present in the cysteine-switch motif binds the catalytic zinc ion, thus inhibiting the enzyme. The dissociation of the cysteine from the zinc ion upon the activation-peptide release activates the enzyme.,function:Can degrade fibronectin, gelatins of type I, III, IV, and V; weakly collagens III, IV, and V. Activates procollagenase.,similarity:Belongs to the peptidase M10A family.,similarity:Contains 4 hemopexin-like domains.,</p>
Subcellular Location :	Secreted, extracellular space, extracellular matrix .
Expression :	Coronary artery,Ovary,
Sort :	9697
No4 :	1
Host :	Rabbit
Modifications :	Unmodified

Products Images



Immunofluorescence analysis of HepG2 cells, using MMP-10 Antibody. The picture on the right is blocked with the synthesized peptide.



Immunohistochemistry analysis of paraffin-embedded human lung carcinoma tissue, using MMP-10 Antibody. The picture on the right is blocked with the synthesized peptide.