

## LASS4 Polyclonal Antibody

<b>Catalog No :</b>	YT2536
<b>Reactivity :</b>	Human;Mouse
<b>Applications :</b>	WB;IHC;IF;ELISA
<b>Target :</b>	LASS4
<b>Fields :</b>	>>Sphingolipid metabolism;>>Metabolic pathways;>>Sphingolipid signaling pathway
<b>Gene Name :</b>	CERS4
<b>Protein Name :</b>	Ceramide synthase 4
<b>Human Gene Id :</b>	79603
<b>Human Swiss Prot No :</b>	Q9HA82
<b>Mouse Swiss Prot No :</b>	Q9D6J1
<b>Immunogen :</b>	The antiserum was produced against synthesized peptide derived from human LASS4. AA range:41-90
<b>Specificity :</b>	LASS4 Polyclonal Antibody detects endogenous levels of LASS4 protein.
<b>Formulation :</b>	Liquid in PBS containing 50% glycerol, 0.5% BSA and 0.02% sodium azide.
<b>Source :</b>	Polyclonal, Rabbit,IgG
<b>Dilution :</b>	WB 1:500 - 1:2000. IHC 1:100 - 1:300. ELISA: 1:10000.. IF 1:50-200
<b>Purification :</b>	The antibody was affinity-purified from rabbit antiserum by affinity-chromatography using epitope-specific immunogen.
<b>Concentration :</b>	1 mg/ml
<b>Storage Stability :</b>	-15°C to -25°C/1 year(Do not lower than -25°C)

**Observed Band :** 46kD

**Background :** function:May be either a bona fide (dihydro)ceramide synthase or a modulator of its activity. When overexpressed in cells is involved in the production of sphingolipids containing different fatty acid donors (N-linked stearyl- (C18) or arachidoyl- (C20) ceramides) in a fumonisin B1-independent manner.,similarity:Contains 1 homeobox DNA-binding domain.,similarity:Contains 1 TLC (TRAM/LAG1/CLN8) domain.,

**Function :** function:May be either a bona fide (dihydro)ceramide synthase or a modulator of its activity. When overexpressed in cells is involved in the production of sphingolipids containing different fatty acid donors (N-linked stearyl- (C18) or arachidoyl- (C20) ceramides) in a fumonisin B1-independent manner.,similarity:Contains 1 homeobox DNA-binding domain.,similarity:Contains 1 TLC (TRAM/LAG1/CLN8) domain.,

**Subcellular Location :** Endoplasmic reticulum membrane ; Multi-pass membrane protein .

**Expression :** Cerebellum,Embryo,Lung,

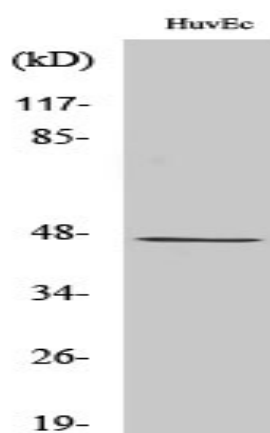
**Sort :** 9121

**No4 :** 1

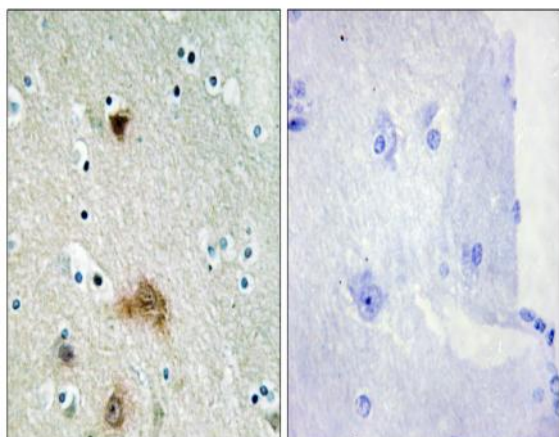
**Host :** Rabbit

**Modifications :** Unmodified

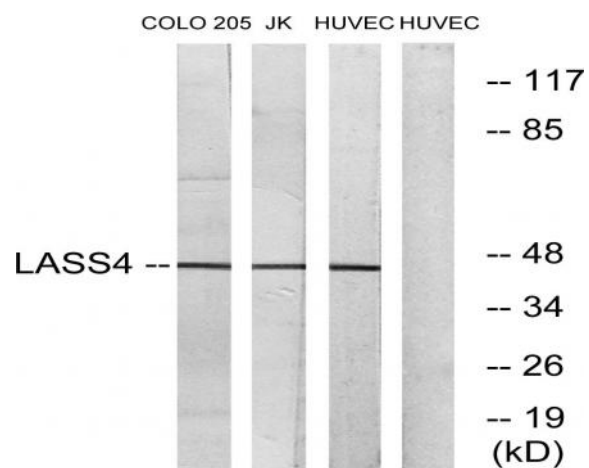
## Products Images



Western Blot analysis of various cells using LASS4 Polyclonal Antibody



Immunohistochemistry analysis of paraffin-embedded human brain tissue, using LASS4 Antibody. The picture on the right is blocked with the synthesized peptide.



Western blot analysis of lysates from HUVEC, COLO, and Jurkat cells, using LASS4 Antibody. The lane on the right is blocked with the synthesized peptide.