

## LAP1B Polyclonal Antibody

<b>Catalog No :</b>	YT2534
<b>Reactivity :</b>	Human;Rat;Mouse;
<b>Applications :</b>	WB;ELISA;IHC
<b>Target :</b>	LAP1B
<b>Gene Name :</b>	TOR1AIP1
<b>Protein Name :</b>	Torsin-1A-interacting protein 1
<b>Human Gene Id :</b>	26092
<b>Human Swiss Prot No :</b>	Q5JTV8
<b>Mouse Swiss Prot No :</b>	Q921T2
<b>Immunogen :</b>	The antiserum was produced against synthesized peptide derived from human TOR1AIP1. AA range:431-480
<b>Specificity :</b>	LAP1B Polyclonal Antibody detects endogenous levels of LAP1B protein.
<b>Formulation :</b>	Liquid in PBS containing 50% glycerol, 0.5% BSA and 0.02% sodium azide.
<b>Source :</b>	Polyclonal, Rabbit,IgG
<b>Dilution :</b>	WB 1:500-2000;IHC 1:50-300; ELISA 2000-20000
<b>Purification :</b>	The antibody was affinity-purified from rabbit antiserum by affinity-chromatography using epitope-specific immunogen.
<b>Concentration :</b>	1 mg/ml
<b>Storage Stability :</b>	-15°C to -25°C/1 year(Do not lower than -25°C)
<b>Observed Band :</b>	66kD

**Background :** This gene encodes a type 2 integral membrane protein that binds A- and B-type lamins. The encoded protein localizes to the inner nuclear membrane and may be involved in maintaining the attachment of the nuclear membrane to the nuclear lamina during cell division. Alternate splicing results in multiple transcript variants. [provided by RefSeq, Apr 2016],

**Function :** function: Binds to A- and B-type lamins. Possible role in membrane attachment and assembly of the nuclear lamina., PTM: Phosphorylated upon DNA damage, probably by ATM or ATR., similarity: Belongs to the TOR1AIP family., subunit: Interacts with TOR1A.,

**Subcellular Location :** Nucleus inner membrane ; Single-pass membrane protein .

**Expression :** Expressed in muscle, liver and kidney.

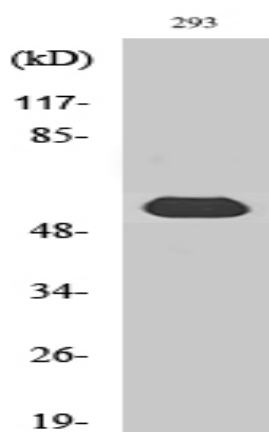
**Sort :** 9117

**No4 :** 1

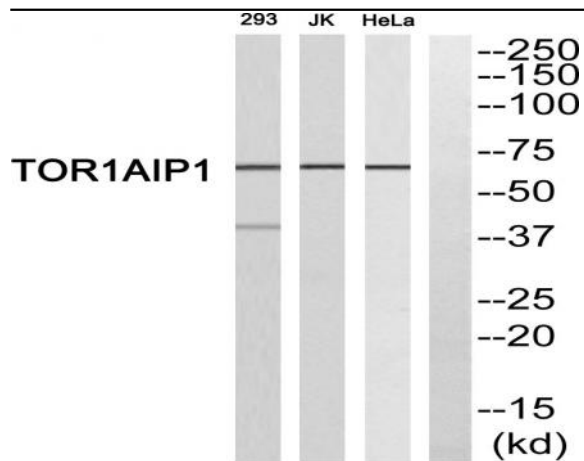
**Host :** Rabbit

**Modifications :** Unmodified

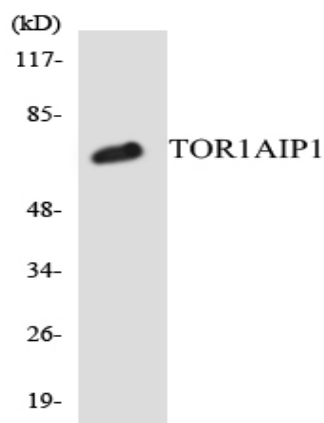
## Products Images



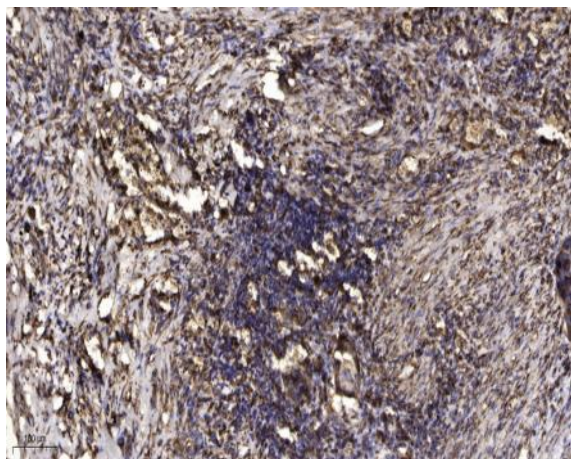
Western Blot analysis of various cells using LAP1B Polyclonal Antibody cells nucleus extracted by Minute TM Cytoplasmic and Nuclear Fractionation kit (SC-003, Inventbiotech, MN, USA).



Western blot analysis of TOR1AIP1 Antibody. The lane on the right is blocked with the TOR1AIP1 peptide.



Western blot analysis of the lysates from COLO205 cells using TOR1AIP1 antibody.



Immunohistochemical analysis of paraffin-embedded human Squamous cell carcinoma of lung. 1, Antibody was diluted at 1:200(4° overnight). 2, Tris-EDTA,pH9.0 was used for antigen retrieval. 3,Secondary antibody was diluted at 1:200(room temperature, 45min).