

CK7 Monoclonal Antibody(12D7)

Catalog No :	YM3054
Reactivity :	Human;Mouse;Rat
Applications :	IF;WB;IHC;IP
Target :	Cytokeratin 7
Gene Name :	KRT7
Protein Name :	Keratin type II cytoskeletal 7
Human Gene Id :	3855
Human Swiss Prot No :	P08729
Mouse Gene Id :	110310
Mouse Swiss Prot No :	Q9DCV7
Rat Gene Id :	300242
Rat Swiss Prot No :	Q6IG12
Immunogen :	Synthetic Peptide of CK7
Specificity :	The antibody detects endogenous CK7 proteins.
Formulation :	PBS, pH 7.4, containing 0.5%BSA, 0.02% sodium azide as Preservative and 50% Glycerol.
Source :	Monoclonal, Mouse
Dilution :	IF 1:50-200 WB 1:1000-2000 IHC 1:200 IP:1:200
Purification :	The antibody was affinity-purified from mouse ascites by affinity-chromatography using specific immunogen.

Storage Stability : -15°C to -25°C/1 year(Do not lower than -25°C)

Observed Band : 54kD

Background : keratin 7(KRT7) Homo sapiens The protein encoded by this gene is a member of the keratin gene family. The type II cytokeratins consist of basic or neutral proteins which are arranged in pairs of heterotypic keratin chains coexpressed during differentiation of simple and stratified epithelial tissues. This type II cytokeratin is specifically expressed in the simple epithelia lining the cavities of the internal organs and in the gland ducts and blood vessels. The genes encoding the type II cytokeratins are clustered in a region of chromosome 12q12-q13. Alternative splicing may result in several transcript variants; however, not all variants have been fully described. [provided by RefSeq, Jul 2008],

Function : function:Blocks interferon-dependent interphase and stimulates DNA synthesis in cells. Involved in the translational regulation of the human papillomavirus type 16 E7 mRNA (HPV16 E7).,induction:Up-regulated by retinoic acid.,mass spectrometry: PubMed:11840567,miscellaneous:There are two types of cytoskeletal and microfibrillar keratin: I (acidic; 40-55 kDa) and II (neutral to basic; 56-70 kDa).,PTM:Arg-20 is dimethylated, probably to asymmetric dimethylarginine.,similarity:Belongs to the intermediate filament family.,subunit:Heterotetramer of two type I and two type II keratins. Interacts with eukaryotic translation initiator factor 3 (eIF3) subunit EIF3S10 and with HPV16 E7.,tissue specificity:Expressed in cultured epidermal, bronchial and mesothelial cells but absent in colon, ectocervix and liver. Observed throughout the glandular cells in the junction between stomach and esophagus bu

Subcellular Location : Cytoplasm .

Expression : Expressed in cultured epidermal, bronchial and mesothelial cells but absent in colon, ectocervix and liver. Observed throughout the glandular cells in the junction between stomach and esophagus but is absent in the esophagus.

Tag : orthogonal,ip,hot

Sort : 1

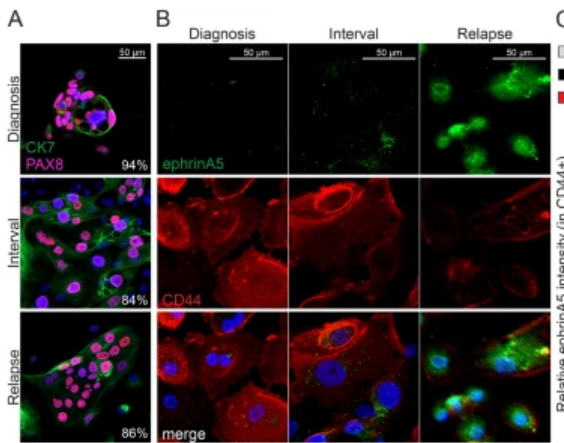
No3 : ab181598

No4 : 1

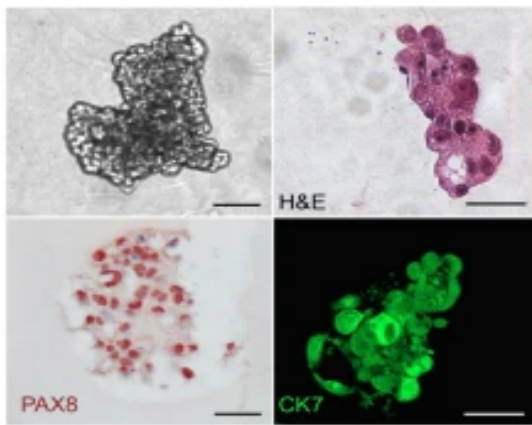
Host : Mouse

Modifications : Unmodified

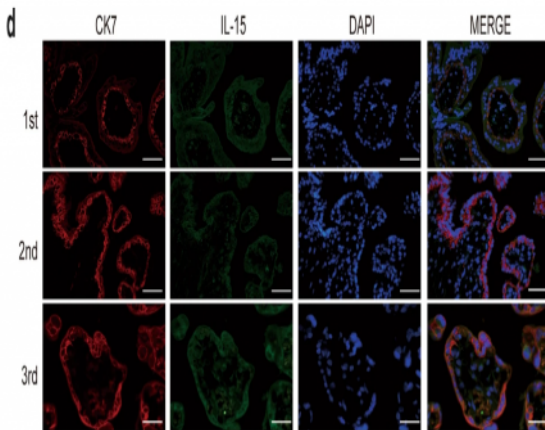
Products Images



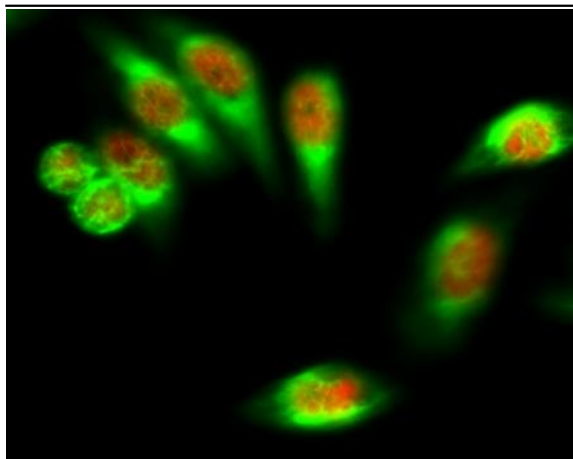
Jukonen, J., Moyano-Galceran, L., Höpfner, K. et al. Aggressive and recurrent ovarian cancers upregulate ephrinA5, a non-canonical effector of EphA2 signaling duality. *Sci Rep*11, 8856 (2021).



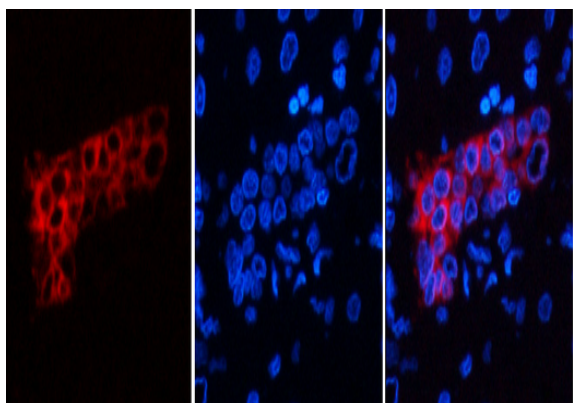
Pietilä, E.A., Gonzalez-Molina, J., Moyano-Galceran, L. et al. Co-evolution of matrisome and adaptive adhesion dynamics drives ovarian cancer chemoresistance. *Nat Commun* 12, 3904 (2021).
h



Li, J., Li, Y., Zhou, X. et al. Upregulation of IL-15 in the placenta alters trophoblasts behavior contributing to gestational diabetes mellitus. *Cell Biosci* 11, 33 (2021).

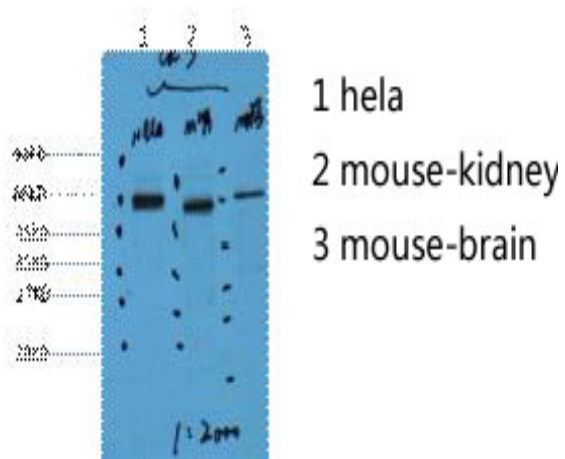


Immunofluorescence analysis of HeLa cell. 1, FoxO1 Polyclonal Antibody (red) was diluted at 1:200 (4° overnight). CK7 Monoclonal Antibody (12D7) (green) was diluted at 1:200 (4° overnight). 2, Goat Anti Rabbit Alexa Fluor 594 Catalog: RS3611 was diluted at 1:1000 (room temperature, 50min). Goat Anti Mouse Alexa Fluor 488 Catalog: RS3208 was diluted at 1:1000 (room temperature, 50min).

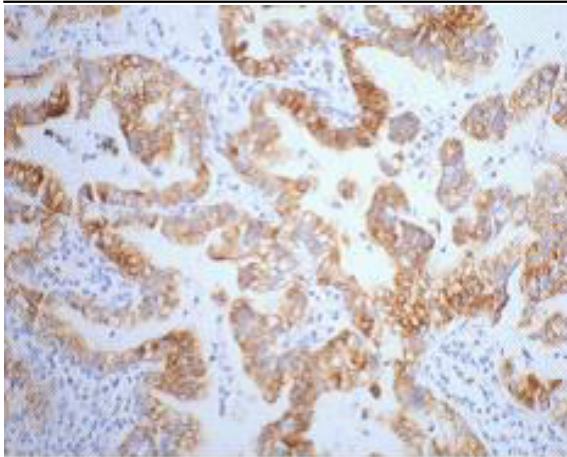


Immunofluorescence analysis of human liver tissue. 1, CK7 Monoclonal Antibody (12D7) (red) was diluted at 1:200 (4°C, overnight). 2, Cy3 labeled Secondary antibody was diluted at 1:300 (room temperature, 50min). 3, Picture B: DAPI (blue) 10min. Picture A: Target. Picture C: merge of A+B

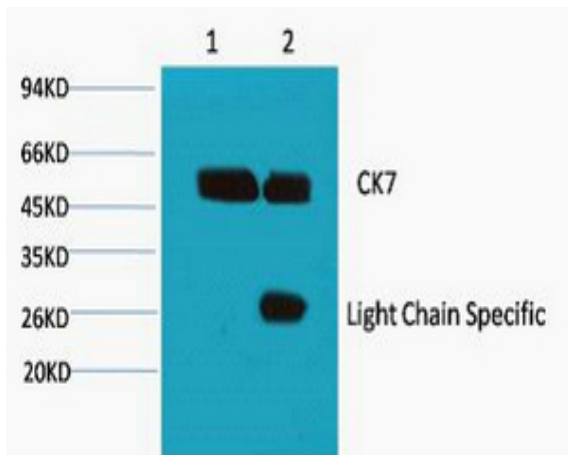
A B C



Western blot analysis of 1) HeLa, 2) Mouse Kidney, 3) Mouse Brain, diluted at 1:2000.



IHC staining of human lung cancer tissue, diluted at 1:200.



1) Input: Hela Cell Lysate 2) IP product: IP dilute 1:200