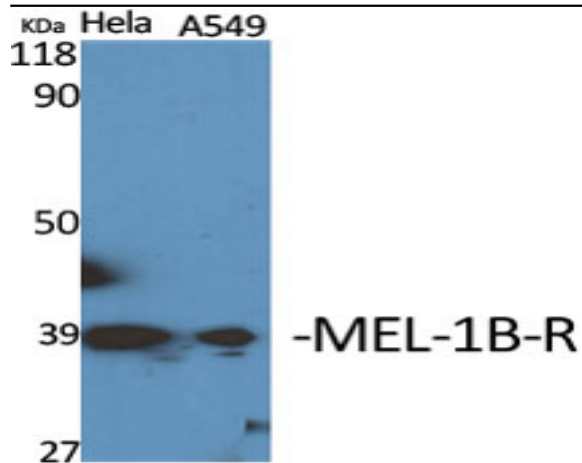


MEL-1B-R Polyclonal Antibody

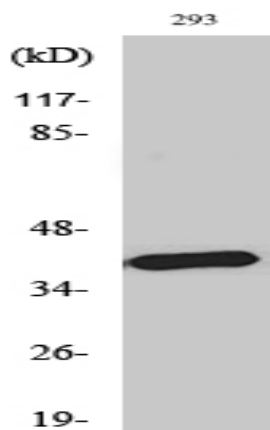
Catalog No :	YT2727
Reactivity :	Human
Applications :	WB;IHC
Target :	MEL-1B-R
Fields :	>>Neuroactive ligand-receptor interaction;>>Circadian entrainment
Gene Name :	MTNR1B
Protein Name :	Melatonin receptor type 1B
Human Gene Id :	4544
Human Swiss Prot No :	P49286
Mouse Swiss Prot No :	Q8CIQ6
Immunogen :	The antiserum was produced against synthesized peptide derived from human MTR1B. AA range:301-350
Specificity :	MEL-1B-R Polyclonal Antibody detects endogenous levels of MEL-1B-R protein.
Formulation :	Liquid in PBS containing 50% glycerol, 0.5% BSA and 0.02% sodium azide.
Source :	Polyclonal, Rabbit,IgG
Dilution :	WB 1:500-2000;IHC 1:50-300
Purification :	The antibody was affinity-purified from rabbit antiserum by affinity-chromatography using epitope-specific immunogen.
Concentration :	1 mg/ml
Storage Stability :	-15°C to -25°C/1 year(Do not lower than -25°C)

Observed Band :	40kD
Cell Pathway :	Neuroactive ligand-receptor interaction;
Background :	This gene encodes one of two high affinity forms of a receptor for melatonin, the primary hormone secreted by the pineal gland. This gene product is an integral membrane protein that is a G-protein coupled, 7-transmembrane receptor. It is found primarily in the retina and brain although this detection requires RT-PCR. It is thought to participate in light-dependent functions in the retina and may be involved in the neurobiological effects of melatonin. [provided by RefSeq, Jul 2008],
Function :	function:High affinity receptor for melatonin. Likely to mediate the reproductive and circadian actions of melatonin. The activity of this receptor is mediated by pertussis toxin sensitive G proteins that inhibit adenylate cyclase activity.,online information:Melatonin receptor entry,similarity:Belongs to the G-protein coupled receptor 1 family.,tissue specificity:Expressed in retina and less in brain and hippocampus.,
Subcellular Location :	Cell membrane; Multi-pass membrane protein.
Expression :	Expressed in retina and less in brain and hippocampus.
Sort :	9576
No4 :	1
Host :	Rabbit
Modifications :	Unmodified

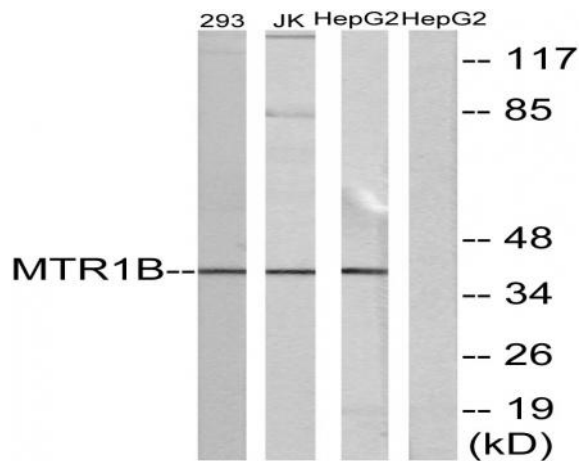
Products Images



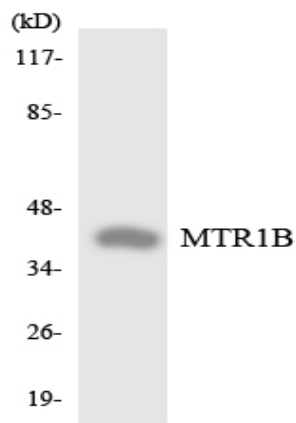
Western blot analysis of various cells using MEL-1B-R Polyclonal Antibody diluted at 1:1000



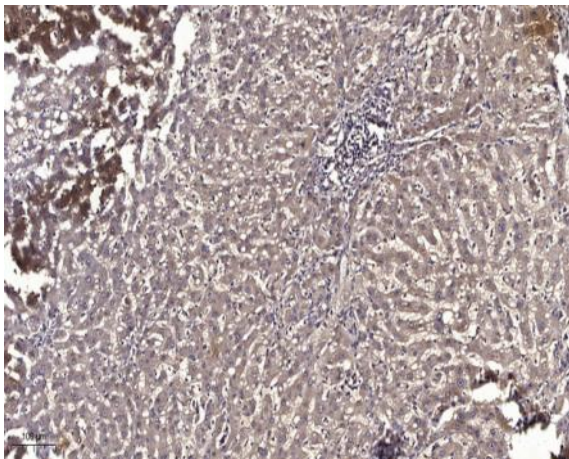
Western blot analysis of HepG2 cells using MEL-1B-R Polyclonal Antibody diluted at 1:1000



Western blot analysis of lysates from 293, Jurkat, and HepG2 cells, using MTR1B Antibody. The lane on the right is blocked with the synthesized peptide.



Western blot analysis of the lysates from HeLa cells using MTR1B antibody.



Immunohistochemical analysis of paraffin-embedded human liver cancer. 1, Antibody was diluted at 1:200(4° overnight). 2, Tris-EDTA,pH9.0 was used for antigen retrieval. 3,Secondary antibody was diluted at 1:200(room temperature, 45min).