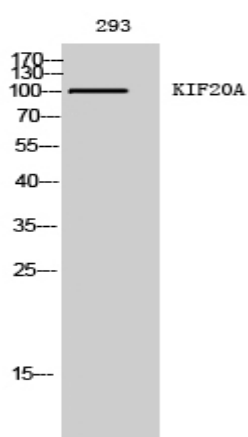


## KIF20A Polyclonal Antibody

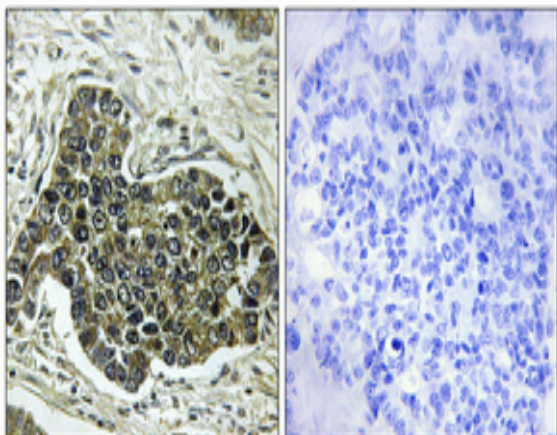
<b>Catalog No :</b>	YT2470
<b>Reactivity :</b>	Human;Mouse
<b>Applications :</b>	WB;IHC;IF;ELISA
<b>Target :</b>	KIF20A
<b>Gene Name :</b>	KIF20A
<b>Protein Name :</b>	Kinesin-like protein KIF20A
<b>Human Gene Id :</b>	10112
<b>Human Swiss Prot No :</b>	O95235
<b>Mouse Swiss Prot No :</b>	P97329
<b>Immunogen :</b>	The antiserum was produced against synthesized peptide derived from human KIF20A. AA range:501-550
<b>Specificity :</b>	KIF20A Polyclonal Antibody detects endogenous levels of KIF20A protein.
<b>Formulation :</b>	Liquid in PBS containing 50% glycerol, 0.5% BSA and 0.02% sodium azide.
<b>Source :</b>	Polyclonal, Rabbit,IgG
<b>Dilution :</b>	WB 1:500 - 1:2000. IHC 1:100 - 1:300. IF 1:200 - 1:1000. ELISA: 1:20000. Not yet tested in other applications.
<b>Purification :</b>	The antibody was affinity-purified from rabbit antiserum by affinity-chromatography using epitope-specific immunogen.
<b>Concentration :</b>	1 mg/ml
<b>Storage Stability :</b>	-15°C to -25°C/1 year(Do not lower than -25°C)
<b>Observed Band :</b>	100kD

<b>Background :</b>	function:Interacts with guanosine triphosphate (GTP)-bound forms of RAB6A and RAB6B. May act as a motor required for the retrograde RAB6 regulated transport of Golgi membranes and associated vesicles along microtubules. Has a microtubule plus end-directed motility.,similarity:Belongs to the kinesin-like protein family.,similarity:Contains 1 kinesin-motor domain.,
<b>Function :</b>	function:Interacts with guanosine triphosphate (GTP)-bound forms of RAB6A and RAB6B. May act as a motor required for the retrograde RAB6 regulated transport of Golgi membranes and associated vesicles along microtubules. Has a microtubule plus end-directed motility.,similarity:Belongs to the kinesin-like protein family.,similarity:Contains 1 kinesin-motor domain.,
<b>Subcellular Location :</b>	Golgi apparatus . Cytoplasm, cytoskeleton, spindle . Localizes to the spindle midzone during anaphase and telophase. .
<b>Expression :</b>	Brain,Endothelial cell,Epithelium,Uterus,
<b>Sort :</b>	8914
<b>No4 :</b>	1
<b>Host :</b>	Rabbit
<b>Modifications :</b>	Unmodified

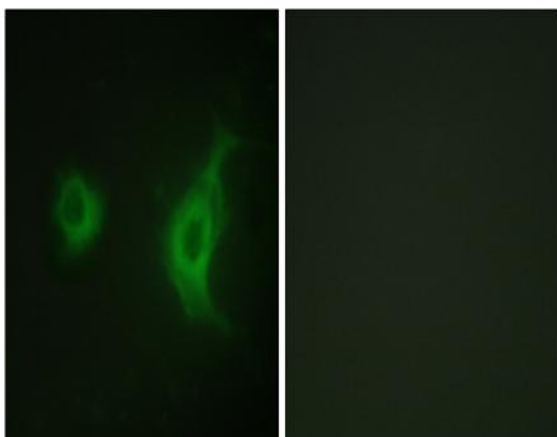
## Products Images



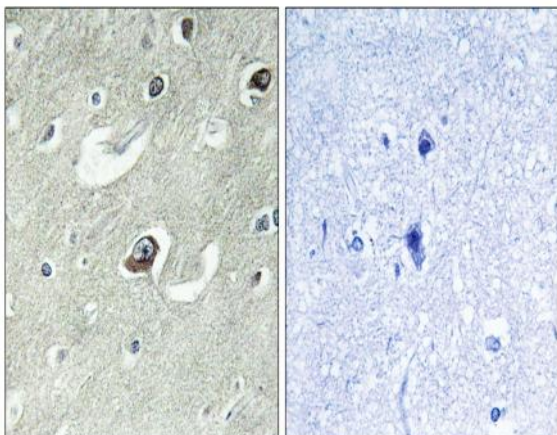
Western Blot analysis of 293 cells using KIF20A Polyclonal Antibody



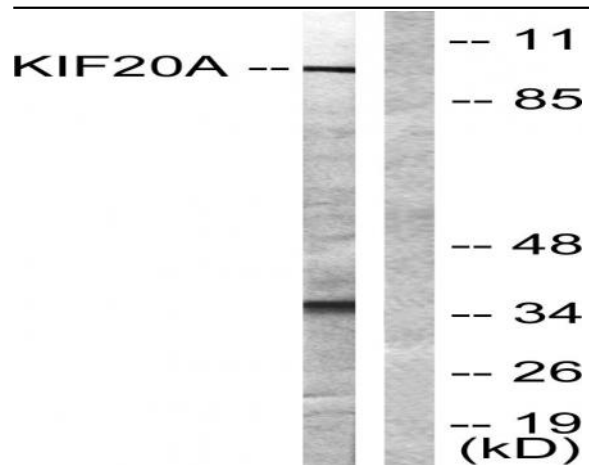
Immunohistochemical analysis of paraffin-embedded Human lung cancer. Antibody was diluted at 1:100(4° overnight). High-pressure and temperature Tris-EDTA,pH8.0 was used for antigen retrieval. Negative contrl (right) obtaned from antibody was pre-absorbed by immunogen peptide.



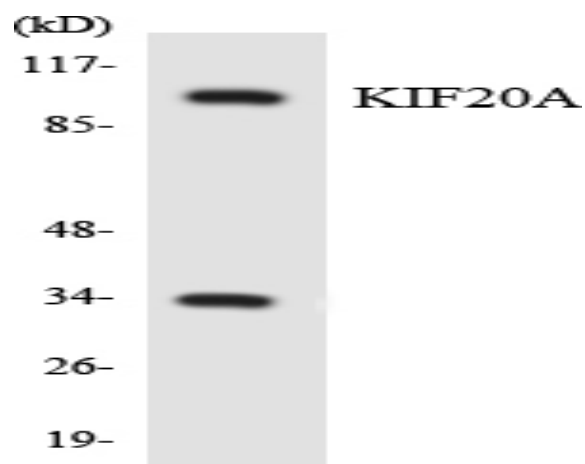
Immunofluorescence analysis of HUVEC cells, using KIF20A Antibody. The picture on the right is blocked with the synthesized peptide.



Immunohistochemistry analysis of paraffin-embedded human brain tissue, using KIF20A Antibody. The picture on the right is blocked with the synthesized peptide.



Western blot analysis of lysates from 293 cells, using KIF20A Antibody. The lane on the right is blocked with the synthesized peptide.



Western blot analysis of the lysates from HepG2 cells using KIF20A antibody.