

KIF13B Polyclonal Antibody

Catalog No :	YT2469
Reactivity :	Human
Applications :	WB;IHC;IF;ELISA
Target :	KIF13B
Gene Name :	KIF13B
Protein Name :	Kinesin-like protein KIF13B
Human Gene Id :	23303
Human Swiss Prot No :	Q9NQT8
Immunogen :	The antiserum was produced against synthesized peptide derived from human KIF13B. AA range:111-160
Specificity :	KIF13B Polyclonal Antibody detects endogenous levels of KIF13B protein.
Formulation :	Liquid in PBS containing 50% glycerol, 0.5% BSA and 0.02% sodium azide.
Source :	Polyclonal, Rabbit,IgG
Dilution :	WB 1:500 - 1:2000. IHC 1:100 - 1:300. ELISA: 1:5000.. IF 1:50-200
Purification :	The antibody was affinity-purified from rabbit antiserum by affinity-chromatography using epitope-specific immunogen.
Concentration :	1 mg/ml
Storage Stability :	-15°C to -25°C/1 year(Do not lower than -25°C)
Observed Band :	202kD
Background :	function:May be involved in reorganization of the cortical cytoskeleton. May be functionally important for the intracellular trafficking of MAGUKs and associated

protein complexes.,PTM:Phosphorylated upon DNA damage, probably by ATM or ATR.,similarity:Belongs to the kinesin-like protein family.,similarity:Contains 1 CAP-Gly domain.,similarity:Contains 1 FHA domain.,similarity:Contains 1 kinesin-motor domain.,subunit:Binds to DLG1 and DLG4.,tissue specificity:Ubiquitous.,

Function :

function:May be involved in reorganization of the cortical cytoskeleton. May be functionally important for the intracellular trafficking of MAGUKs and associated protein complexes.,PTM:Phosphorylated upon DNA damage, probably by ATM or ATR.,similarity:Belongs to the kinesin-like protein family.,similarity:Contains 1 CAP-Gly domain.,similarity:Contains 1 FHA domain.,similarity:Contains 1 kinesin-motor domain.,subunit:Binds to DLG1 and DLG4.,tissue specificity:Ubiquitous.,

Subcellular Location :

Cytoplasm, cytoskeleton . Cell projection, axon . accumulates at the distal part of the microtubules in the tips of axons, but not of dendrites.

Expression :

Ubiquitous.

Sort :

8911

No4 :

1

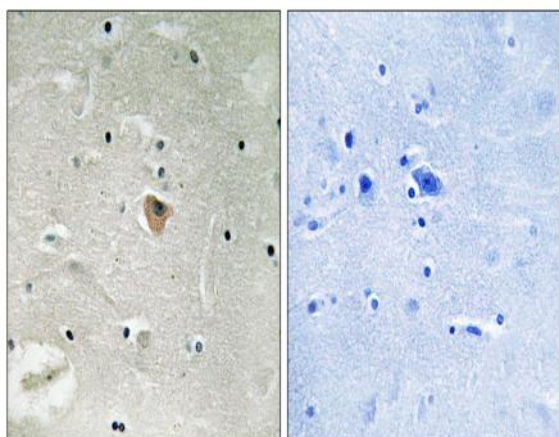
Host :

Rabbit

Modifications :

Unmodified

Products Images



Immunohistochemistry analysis of paraffin-embedded human brain, using KIF13B Antibody. The picture on the right is blocked with the synthesized peptide.