

CD68 Monoclonal Antibody(6F3)

Catalog No :	YM3050
Reactivity :	Human;Mouse;Rat
Applications :	IHC;IF
Target :	CD68
Fields :	>>Lysosome
Gene Name :	CD68
Protein Name :	Macrosialin
Human Gene Id :	968
Human Swiss Prot No :	P34810
Mouse Gene Id :	12514
Mouse Swiss Prot No :	P31996
Immunogen :	Synthetic Peptide of CD68
Specificity :	The antibody detects endogenous CD68 proteins.
Formulation :	PBS, pH 7.4, containing 0.5%BSA, 0.02% sodium azide as Preservative and 50% Glycerol.
Source :	Monoclonal, Mouse/IgG2b, Kappa
Dilution :	IHC 1:200-400, IF 1:50-200
Purification :	The antibody was affinity-purified from mouse ascites by affinity-chromatography using specific immunogen.
Storage Stability :	-15°C to -25°C/1 year(Do not lower than -25°C)

Observed Band : 37kD

Cell Pathway : Lysosome;

Background : This gene encodes a 110-kD transmembrane glycoprotein that is highly expressed by human monocytes and tissue macrophages. It is a member of the lysosomal/endosomal-associated membrane glycoprotein (LAMP) family. The protein primarily localizes to lysosomes and endosomes with a smaller fraction circulating to the cell surface. It is a type I integral membrane protein with a heavily glycosylated extracellular domain and binds to tissue- and organ-specific lectins or selectins. The protein is also a member of the scavenger receptor family. Scavenger receptors typically function to clear cellular debris, promote phagocytosis, and mediate the recruitment and activation of macrophages. Alternative splicing results in multiple transcripts encoding different isoforms. [provided by RefSeq, Jul 2008],

Function : function:Could play a role in phagocytic activities of tissue macrophages, both in intracellular lysosomal metabolism and extracellular cell-cell and cell-pathogen interactions. Bind to tissue- and organ-specific lectins or selectins, allowing homing of macrophage subsets to particular sites. Rapid recirculation of CD68 from endosomes, lysosomes to the plasma membrane may allow macrophages to crawl over selectin bearing substrates or other cells.,PTM:N- and O-glycosylated.,similarity:Belongs to the LAMP family.,tissue specificity:Highly expressed by blood monocytes and tissue macrophages. Also expressed in many tumor cell lines which could allow them to attach to selectins on vascular endothelium, facilitating their dissemination to secondary sites.,

Subcellular Location : [Isoform Short]: Cell membrane; Single-pass type I membrane protein.; [Isoform Long]: Endosome membrane; Single-pass type I membrane protein. Lysosome membrane; Single-pass type I membrane protein.

Expression : Highly expressed by blood monocytes and tissue macrophages. Also expressed in lymphocytes, fibroblasts and endothelial cells. Expressed in many tumor cell lines which could allow them to attach to selectins on vascular endothelium, facilitating their dissemination to secondary sites.

Tag : orthogonal

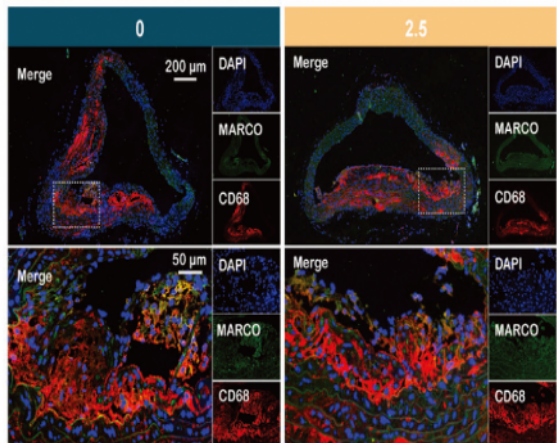
Sort : 1

No3 : ab955

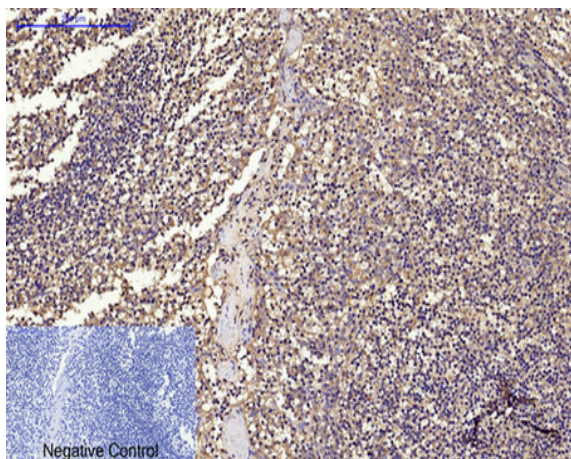
No4 : 1

Host : Mouse

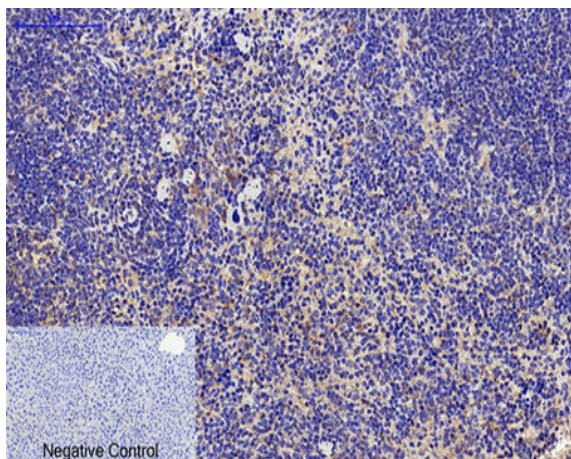
Products Images



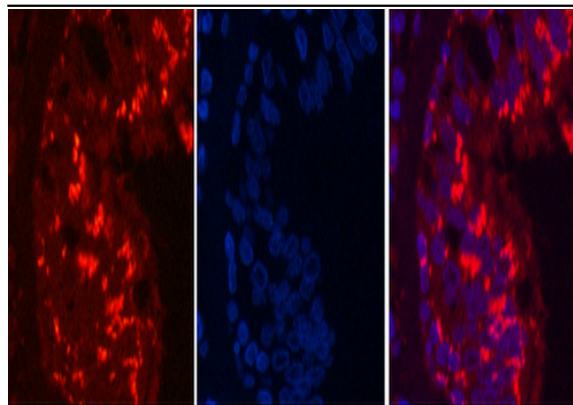
Long-Chain Acyl Carnitines Aggravate Polystyrene Nanoplastics-Induced Atherosclerosis by Upregulating MARCO. Zhenlie Huang IF Mouse aorta



Immunohistochemical analysis of paraffin-embedded Human-Tonsil tissue. 1, CD68 Monoclonal Antibody(6F3) was diluted at 1:200(4°C, overnight). 2, Sodium citrate pH 6.0 was used for antibody retrieval(>98°C, 20min). 3, Secondary antibody was diluted at 1:200(room temperature, 30min). Negative control was used by secondary antibody only.



Immunohistochemical analysis of paraffin-embedded Mouse-liver tissue. 1, CD68 Monoclonal Antibody(6F3) was diluted at 1:200(4°C, overnight). 2, Sodium citrate pH 6.0 was used for antibody retrieval(>98°C, 20min). 3, Secondary antibody was diluted at 1:200(room temperature, 30min). Negative control was used by secondary antibody only.

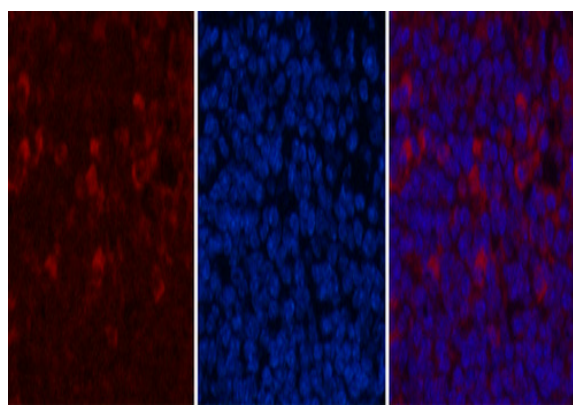


A

B

C

Immunofluorescence analysis of Human-lung-cancer tissue. 1,CD68 Monoclonal Antibody(6F3)(red) was diluted at 1:200(4°C,overnight). 2, Cy3 labeled Secondary antibody was diluted at 1:300(room temperature, 50min).3, Picture B: DAPI(blue) 10min. Picture A:Target. Picture B: DAPI. Picture C: merge of A+B

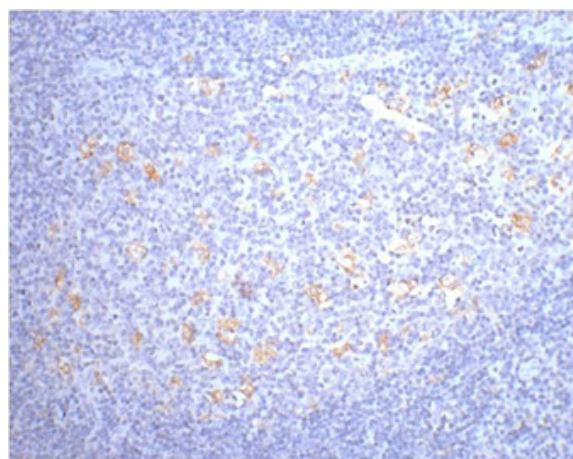


A

B

C

Immunofluorescence analysis of Mouse-spleen tissue. 1,CD68 Monoclonal Antibody(6F3)(red) was diluted at 1:200(4°C,overnight). 2, Cy3 labeled Secondary antibody was diluted at 1:300(room temperature, 50min).3, Picture B: DAPI(blue) 10min. Picture A:Target. Picture B: DAPI. Picture C: merge of A+B



IHC staining of human tonsil tissue, diluted at 1:200.