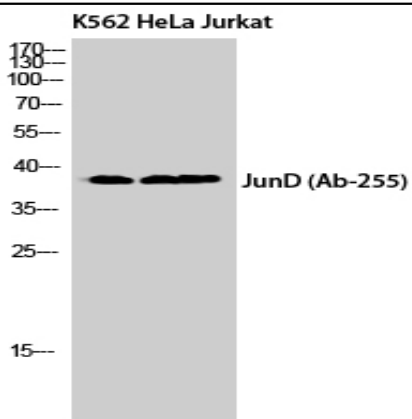


Jun D Polyclonal Antibody

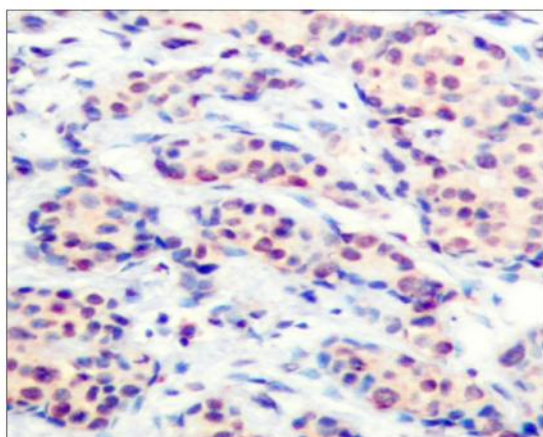
Catalog No :	YT2447
Reactivity :	Human;Mouse;Rat
Applications :	WB;IHC;IF;IP;ELISA
Target :	Jun D
Fields :	>>MAPK signaling pathway;>>Osteoclast differentiation;>>IL-17 signaling pathway;>>Parathyroid hormone synthesis, secretion and action
Gene Name :	JUND
Protein Name :	Transcription factor jun-D
Human Gene Id :	3727
Human Swiss Prot No :	P17535
Mouse Gene Id :	16478
Mouse Swiss Prot No :	P15066
Rat Gene Id :	24518
Rat Swiss Prot No :	P52909
Immunogen :	The antiserum was produced against synthesized peptide derived from human JunD. AA range:222-271
Specificity :	Jun D Polyclonal Antibody detects endogenous levels of Jun D protein.
Formulation :	Liquid in PBS containing 50% glycerol, 0.5% BSA and 0.02% sodium azide.
Source :	Polyclonal, Rabbit,IgG
Dilution :	WB 1:500 - 1:2000. IHC 1:100 - 1:300. Immunoprecipitation: 2-5 ug:mg lysate. ELISA: 1:20000.. IF 1:50-200

Purification :	The antibody was affinity-purified from rabbit antiserum by affinity-chromatography using epitope-specific immunogen.
Concentration :	1 mg/ml
Storage Stability :	-15°C to -25°C/1 year(Do not lower than -25°C)
Observed Band :	38kD
Cell Pathway :	MAPK_ERK_Growth;MAPK_G_Protein;
Background :	The protein encoded by this intronless gene is a member of the JUN family, and a functional component of the AP1 transcription factor complex. This protein has been proposed to protect cells from p53-dependent senescence and apoptosis. Alternative translation initiation site usage results in the production of different isoforms (PMID:12105216). [provided by RefSeq, Nov 2013],
Function :	function:Binds an AP-1 site and upon cotransfection stimulates the activity of a promoter that bears an AP-1 site.,similarity:Belongs to the bZIP family. Jun subfamily.,similarity:Contains 1 bZIP domain.,subunit:Binds DNA as a dimer.,
Subcellular Location :	Nucleus.
Expression :	Epithelium,Spleen,
Tag :	ip
Sort :	8819
No4 :	1
Host :	Rabbit
Modifications :	Unmodified

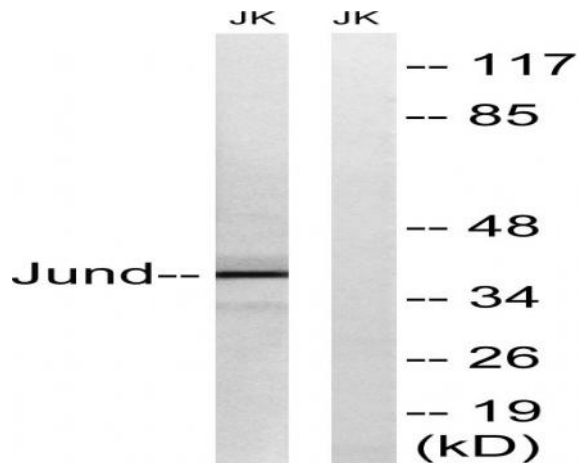
Products Images



Western Blot analysis of K562 HeLa Jurkat cells using Jun D Polyclonal Antibody cells nucleus extracted by Minute TM Cytoplasmic and Nuclear Fractionation kit (SC-003, Inventbiotech, MN, USA).



Immunohistochemistry analysis of paraffin-embedded human breast carcinoma tissue, using JunD Antibody. The picture on the right is blocked with the synthesized peptide.



Western blot analysis of lysates from Jurkat cells, using JunD Antibody. The lane on the right is blocked with the synthesized peptide.