

MCT14 Polyclonal Antibody

Catalog No :	YT2684
Reactivity :	Human;Mouse
Applications :	WB;ELISA
Target :	MCT14
Gene Name :	SLC16A14
Protein Name :	Monocarboxylate transporter 14
Human Gene Id :	151473
Human Swiss Prot No :	Q7RTX9
Mouse Gene Id :	71781
Mouse Swiss Prot No :	Q8K1C7
Immunogen :	The antiserum was produced against synthesized peptide derived from human MOT14. AA range:131-180
Specificity :	MCT14 Polyclonal Antibody detects endogenous levels of MCT14 protein.
Formulation :	Liquid in PBS containing 50% glycerol, 0.5% BSA and 0.02% sodium azide.
Source :	Polyclonal, Rabbit,IgG
Dilution :	WB 1:500 - 1:2000. ELISA: 1:10000. Not yet tested in other applications.
Purification :	The antibody was affinity-purified from rabbit antiserum by affinity-chromatography using epitope-specific immunogen.
Concentration :	1 mg/ml
Storage Stability :	-15°C to -25°C/1 year(Do not lower than -25°C)

Observed Band : 48kD

Background : function:Proton-linked monocarboxylate transporter. Catalyzes the rapid transport across the plasma membrane of many monocarboxylates.,similarity:Belongs to the major facilitator superfamily. Monocarboxylate porter (TC 2.A.1.13) family.,

Function : function:Proton-linked monocarboxylate transporter. Catalyzes the rapid transport across the plasma membrane of many monocarboxylates.,similarity:Belongs to the major facilitator superfamily. Monocarboxylate porter (TC 2.A.1.13) family.,

Subcellular Location : Cell membrane ; Multi-pass membrane protein .

Expression : Alzheimer cortex,Brain,Brain cortex,Lung,

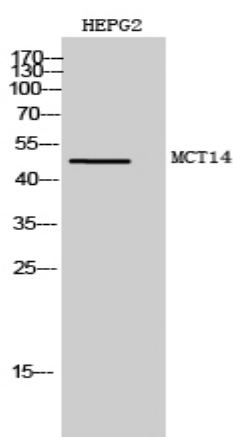
Sort : 9481

No4 : 1

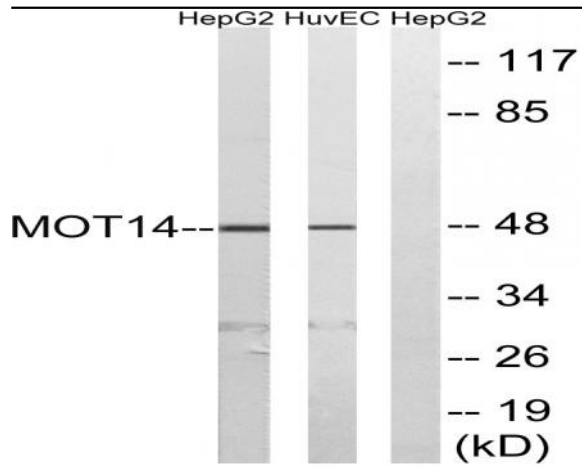
Host : Rabbit

Modifications : Unmodified

Products Images



Western Blot analysis of HEPG2 cells using MCT14 Polyclonal Antibody diluted at 1:1000



Western blot analysis of lysates from HUVEC and HepG2 cells, using MOT14 Antibody. The lane on the right is blocked with the synthesized peptide.