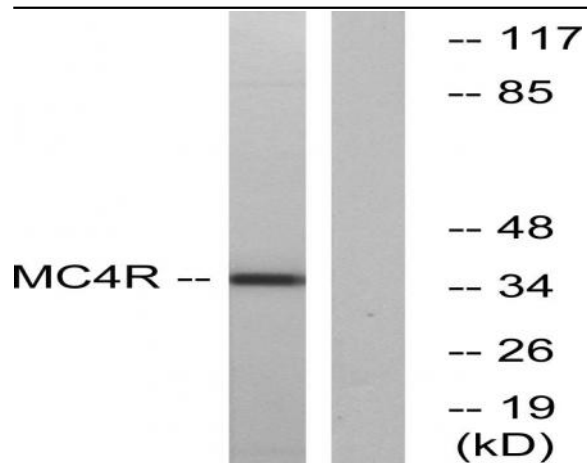


MC4-R Polyclonal Antibody

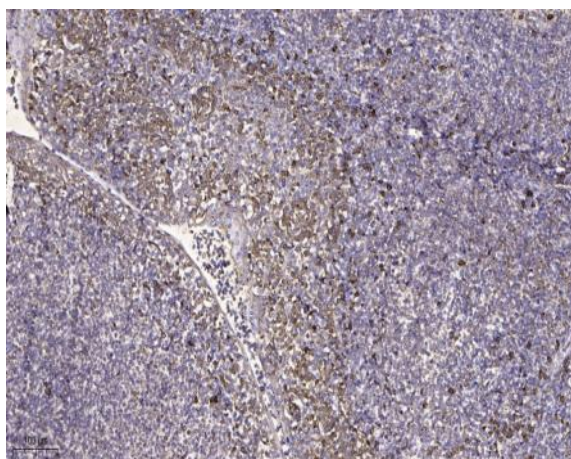
Catalog No :	YT2675
Reactivity :	Human;Mouse;Rat
Applications :	WB;IHC;IF;ELISA
Target :	MC4-R
Fields :	>>Neuroactive ligand-receptor interaction
Gene Name :	MC4R
Protein Name :	Melanocortin receptor 4
Human Gene Id :	4160
Human Swiss Prot No :	P32245
Mouse Gene Id :	17202
Mouse Swiss Prot No :	P56450
Rat Gene Id :	25635
Rat Swiss Prot No :	P70596
Immunogen :	The antiserum was produced against synthesized peptide derived from human MC4R. AA range:281-330
Specificity :	MC4-R Polyclonal Antibody detects endogenous levels of MC4-R protein.
Formulation :	Liquid in PBS containing 50% glycerol, 0.5% BSA and 0.02% sodium azide.
Source :	Polyclonal, Rabbit,IgG
Dilution :	WB 1:500 - 1:2000. IHC 1:100 - 1:300. ELISA: 1:40000.. IF 1:50-200

Purification :	The antibody was affinity-purified from rabbit antiserum by affinity-chromatography using epitope-specific immunogen.
Concentration :	1 mg/ml
Storage Stability :	-15°C to -25°C/1 year(Do not lower than -25°C)
Observed Band :	37kD
Cell Pathway :	Neuroactive ligand-receptor interaction;
Background :	The protein encoded by this gene is a membrane-bound receptor and member of the melanocortin receptor family. The encoded protein interacts with adrenocorticotrophic and MSH hormones and is mediated by G proteins. This is an intronless gene. Defects in this gene are a cause of autosomal dominant obesity. [provided by RefSeq, Jan 2010],
Function :	disease:Defects in MC4R are a cause of autosomal dominant obesity [MIM:601665].,function:Receptor specific to the heptapeptide core common to adrenocorticotrophic hormone and alpha-, beta-, and gamma-MSH. This receptor is mediated by G proteins that stimulate adenylate cyclase.,online information:Melanocortin receptor entry,similarity:Belongs to the G-protein coupled receptor 1 family.,subunit:Interacts with ATRNL1.,tissue specificity:Brain, placental, and gut tissues.,
Subcellular Location :	Cell membrane ; Multi-pass membrane protein .
Expression :	Brain, placental, and gut tissues.
Sort :	9440
No4 :	1
Host :	Rabbit
Modifications :	Unmodified

Products Images



Western blot analysis of lysates from MCF-7 cells, using MC4R Antibody. The lane on the right is blocked with the synthesized peptide.



Immunohistochemical analysis of paraffin-embedded human tonsil. 1, Antibody was diluted at 1:200(4° overnight). 2, Tris-EDTA,pH9.0 was used for antigen retrieval. 3,Secondary antibody was diluted at 1:200(room temperature, 45min).