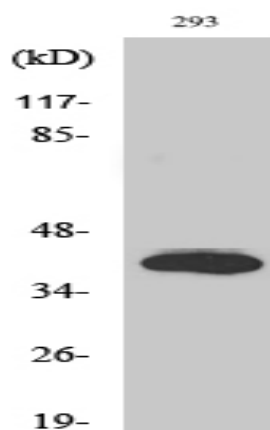


## Islet-2 Polyclonal Antibody

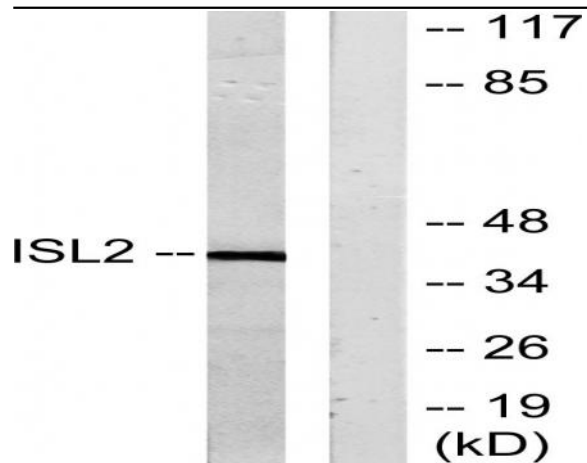
<b>Catalog No :</b>	YT2415
<b>Reactivity :</b>	Human;Mouse;Rat
<b>Applications :</b>	WB;IHC
<b>Target :</b>	Islet-2
<b>Gene Name :</b>	ISL2
<b>Protein Name :</b>	Insulin gene enhancer protein ISL-2
<b>Human Gene Id :</b>	64843
<b>Human Swiss Prot No :</b>	Q96A47
<b>Mouse Gene Id :</b>	104360
<b>Mouse Swiss Prot No :</b>	Q9CXV0
<b>Rat Gene Id :</b>	57233
<b>Rat Swiss Prot No :</b>	P50480
<b>Immunogen :</b>	The antiserum was produced against synthesized peptide derived from human ISL2. AA range:161-210
<b>Specificity :</b>	Islet-2 Polyclonal Antibody detects endogenous levels of Islet-2 protein.
<b>Formulation :</b>	Liquid in PBS containing 50% glycerol, 0.5% BSA and 0.02% sodium azide.
<b>Source :</b>	Polyclonal, Rabbit,IgG
<b>Dilution :</b>	WB 1:500-2000;IHC 1:50-300
<b>Purification :</b>	The antibody was affinity-purified from rabbit antiserum by affinity-chromatography using epitope-specific immunogen.

<b>Concentration :</b>	1 mg/ml
<b>Storage Stability :</b>	-15°C to -25°C/1 year(Do not lower than -25°C)
<b>Observed Band :</b>	40kD
<b>Background :</b>	function:Transcriptional factor that defines subclasses of motoneurons that segregate into columns in the spinal cord and select distinct axon pathways.,similarity:Contains 1 homeobox DNA-binding domain.,similarity:Contains 2 LIM zinc-binding domains.,
<b>Function :</b>	function:Transcriptional factor that defines subclasses of motoneurons that segregate into columns in the spinal cord and select distinct axon pathways.,similarity:Contains 1 homeobox DNA-binding domain.,similarity:Contains 2 LIM zinc-binding domains.,
<b>Subcellular Location :</b>	Nucleus .
<b>Expression :</b>	Epithelium,Eye,
<b>Sort :</b>	8712
<b>No4 :</b>	1
<b>Host :</b>	Rabbit
<b>Modifications :</b>	Unmodified

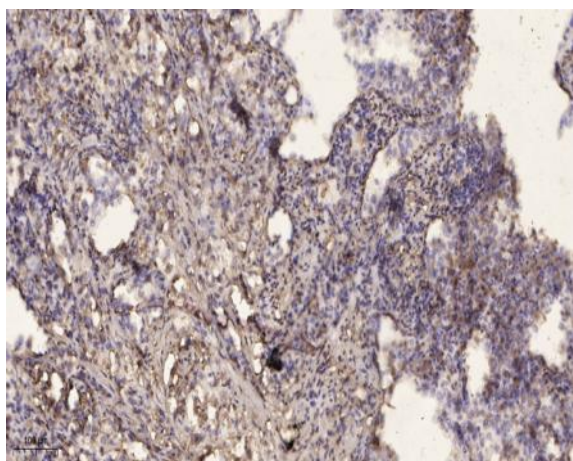
## Products Images



Western Blot analysis of various cells using Islet-2 Polyclonal Antibody diluted at 1:500 cells nucleus extracted by Minute TM Cytoplasmic and Nuclear Fractionation kit (SC-003, Inventbiotech, MN, USA).



Western blot analysis of lysates from 293 cells, using ISL2 Antibody. The lane on the right is blocked with the synthesized peptide.



Immunohistochemical analysis of paraffin-embedded human lung cancer. 1, Antibody was diluted at 1:200(4° overnight). 2, Tris-EDTA,pH9.0 was used for antigen retrieval. 3,Secondary antibody was diluted at 1:200(room temperature, 45min).