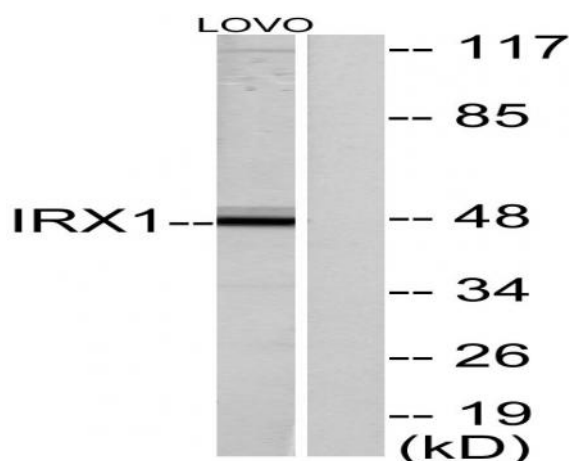


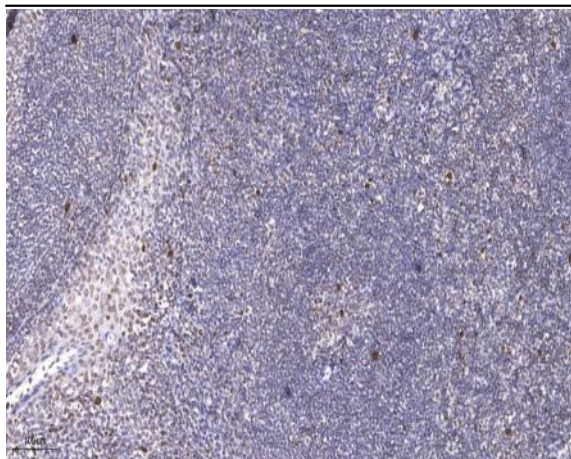
IRX1 Polyclonal Antibody

Catalog No :	YT2412
Reactivity :	Human;Mouse
Applications :	WB;IHC;IF;ELISA
Target :	IRX1
Gene Name :	IRX1
Protein Name :	Iroquois-class homeodomain protein IRX-1
Human Gene Id :	79192
Human Swiss Prot No :	P78414
Mouse Gene Id :	16371
Mouse Swiss Prot No :	P81068
Immunogen :	The antiserum was produced against synthesized peptide derived from human IRX1. AA range:221-270
Specificity :	IRX1 Polyclonal Antibody detects endogenous levels of IRX1 protein.
Formulation :	Liquid in PBS containing 50% glycerol, 0.5% BSA and 0.02% sodium azide.
Source :	Polyclonal, Rabbit,IgG
Dilution :	WB 1:500 - 1:2000. IHC 1:100 - 1:300. IF 1:200 - 1:1000. ELISA: 1:40000. Not yet tested in other applications.
Purification :	The antibody was affinity-purified from rabbit antiserum by affinity-chromatography using epitope-specific immunogen.
Concentration :	1 mg/ml
Storage Stability :	-15°C to -25°C/1 year(Do not lower than -25°C)

Observed Band : 47kD**Background :** This gene encodes a member of the Iroquois homeobox protein family. Homeobox genes in this family are involved in pattern formation in the embryo. The gene product has been identified as a tumor suppressor in gastric (PMID: 21602894, 20440264) and head and neck cancers (PMID: 18559491). A pseudogene of this gene is located on chromosome 13. [provided by RefSeq, Dec 2011],**Function :** similarity:Belongs to the TALE/IRO homeobox family.,similarity:Contains 1 homeobox DNA-binding domain.,**Subcellular Location :** Nucleus .**Expression :** Brain,Lung,**Tag :** orthogonal**Sort :** 8706**No4 :** 1**Host :** Rabbit**Modifications :** Unmodified

Products Images





Immunohistochemical analysis of paraffin-embedded human tonsil. 1, Antibody was diluted at 1:200(4° overnight). 2, Tris-EDTA,pH9.0 was used for antigen retrieval. 3,Secondary antibody was diluted at 1:200(room temperature, 45min).