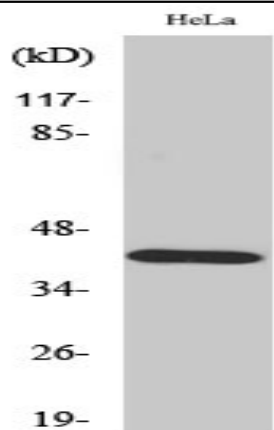


Maspin Polyclonal Antibody

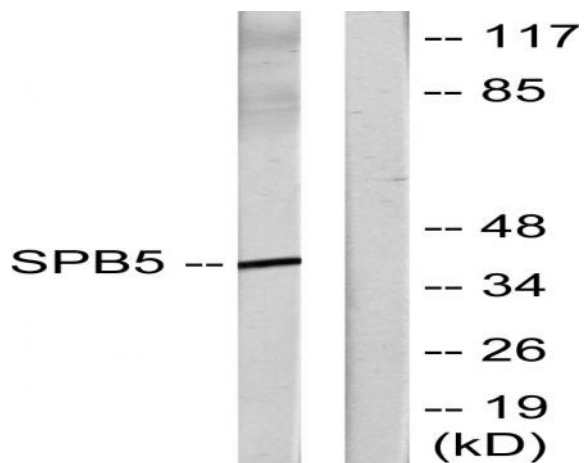
Catalog No :	YT2657
Reactivity :	Human;Mouse;Rat
Applications :	WB;IHC;IF;ELISA
Target :	Maspin
Fields :	>>p53 signaling pathway;>>MicroRNAs in cancer
Gene Name :	SERPINB5
Protein Name :	Serpin B5
Human Gene Id :	5268
Human Swiss Prot No :	P36952
Mouse Gene Id :	20724
Mouse Swiss Prot No :	P70124
Rat Gene Id :	116589
Rat Swiss Prot No :	P70564
Immunogen :	The antiserum was produced against synthesized peptide derived from human Serpin B5. AA range:91-140
Specificity :	Maspin Polyclonal Antibody detects endogenous levels of Maspin protein.
Formulation :	Liquid in PBS containing 50% glycerol, 0.5% BSA and 0.02% sodium azide.
Source :	Polyclonal, Rabbit,IgG
Dilution :	WB 1:500 - 1:2000. IHC 1:100 - 1:300. IF 1:200 - 1:1000. ELISA: 1:20000. Not yet tested in other applications.

Purification :	The antibody was affinity-purified from rabbit antiserum by affinity-chromatography using epitope-specific immunogen.
Concentration :	1 mg/ml
Storage Stability :	-15°C to -25°C/1 year(Do not lower than -25°C)
Observed Band :	40kD
Cell Pathway :	p53;
Background :	function:Tumor suppressor. It blocks the growth, invasion, and metastatic properties of mammary tumors. As it does not undergo the S (stressed) to R (relaxed) conformational transition characteristic of active serpins, it exhibits no serine protease inhibitory activity.,similarity:Belongs to the serpin family. Ov-serpin subfamily.,tissue specificity:Normal mammary epithelial cells.,
Function :	function:Tumor suppressor. It blocks the growth, invasion, and metastatic properties of mammary tumors. As it does not undergo the S (stressed) to R (relaxed) conformational transition characteristic of active serpins, it exhibits no serine protease inhibitory activity.,similarity:Belongs to the serpin family. Ov-serpin subfamily.,tissue specificity:Normal mammary epithelial cells.,
Subcellular Location :	Secreted, extracellular space.
Expression :	Normal mammary epithelial cells.
Sort :	9406
No4 :	1
Host :	Rabbit
Modifications :	Unmodified

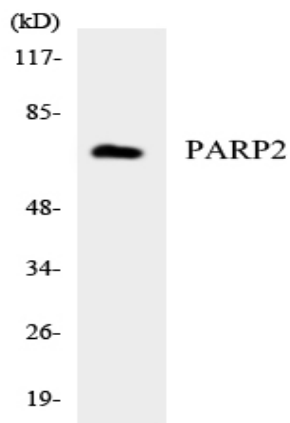
Products Images



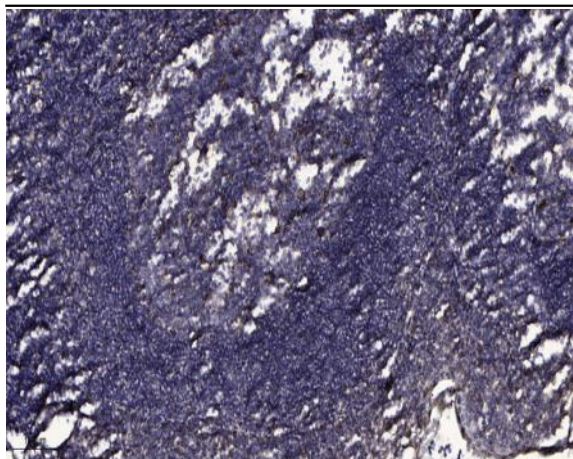
Western Blot analysis of various cells using Maspin Polyclonal Antibody



Western blot analysis of lysates from HeLa cells, using Serpin B5 Antibody. The lane on the right is blocked with the synthesized peptide.



Western blot analysis of the lysates from HeLa cells using PARP2 antibody.



Immunohistochemical analysis of paraffin-embedded human tonsil. 1, Antibody was diluted at 1:200(4° overnight). 2, Tris-EDTA,pH9.0 was used for antigen retrieval. 3,Secondary antibody was diluted at 1:200(room temperature, 30min).