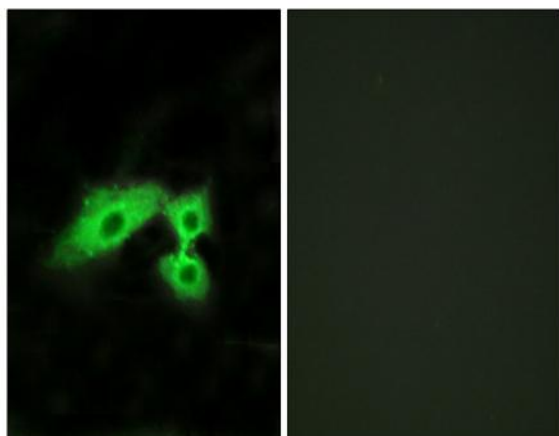


Mas1-like Polyclonal Antibody

Catalog No :	YT2654
Reactivity :	Human;Rat;Mouse;
Applications :	IF;ELISA
Target :	Mas1-like
Gene Name :	MAS1L
Protein Name :	Mas-related G-protein coupled receptor MRG
Human Gene Id :	116511
Human Swiss Prot No :	P35410
Immunogen :	The antiserum was produced against synthesized peptide derived from human MAS1L. AA range:31-80
Specificity :	Mas1-like Polyclonal Antibody detects endogenous levels of Mas1-like protein.
Formulation :	Liquid in PBS containing 50% glycerol, 0.5% BSA and 0.02% sodium azide.
Source :	Polyclonal, Rabbit,IgG
Dilution :	IF 1:200 - 1:1000. ELISA: 1:5000. Not yet tested in other applications.
Purification :	The antibody was affinity-purified from rabbit antiserum by affinity-chromatography using epitope-specific immunogen.
Concentration :	1 mg/ml
Storage Stability :	-15°C to -25°C/1 year(Do not lower than -25°C)
Molecularweight :	42kD
Background :	similarity:Belongs to the G-protein coupled receptor 1 family.,similarity:Belongs to the G-protein coupled receptor 1 family. Mas subfamily.,

Function :	similarity:Belongs to the G-protein coupled receptor 1 family.,similarity:Belongs to the G-protein coupled receptor 1 family. Mas subfamily.,
Subcellular Location :	Cell membrane; Multi-pass membrane protein.
Expression :	G-protein coupled receptors,PCR rescued clones,
Sort :	9402
No4 :	1
Host :	Rabbit
Modifications :	Unmodified

Products Images



Immunofluorescence analysis of HeLa cells, using MAS1L Antibody. The picture on the right is blocked with the synthesized peptide.