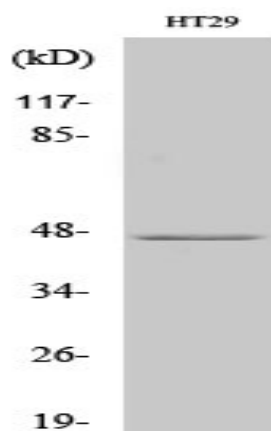


IPMK Polyclonal Antibody

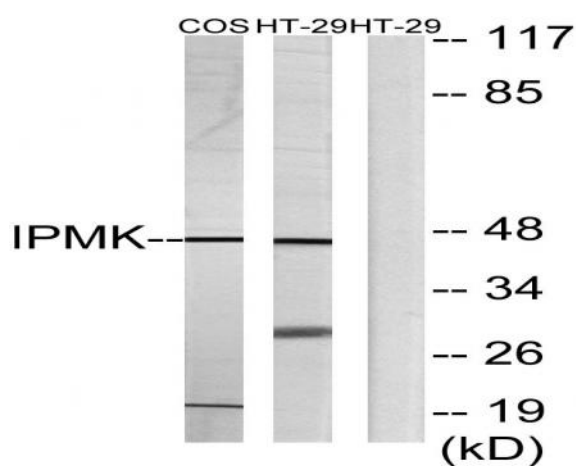
Catalog No :	YT2384
Reactivity :	Human;Mouse;Rat;Monkey
Applications :	WB;IHC;IF;ELISA
Target :	IPMK
Fields :	>>Inositol phosphate metabolism;>>Metabolic pathways;>>Phosphatidylinositol signaling system
Gene Name :	IPMK
Protein Name :	Inositol polyphosphate multikinase
Human Gene Id :	253430
Human Swiss Prot No :	Q8NFU5
Mouse Gene Id :	69718
Mouse Swiss Prot No :	Q7TT16
Rat Gene Id :	171458
Rat Swiss Prot No :	Q99NI4
Immunogen :	The antiserum was produced against synthesized peptide derived from human IPMK. AA range:311-360
Specificity :	IPMK Polyclonal Antibody detects endogenous levels of IPMK protein.
Formulation :	Liquid in PBS containing 50% glycerol, 0.5% BSA and 0.02% sodium azide.
Source :	Polyclonal, Rabbit,IgG
Dilution :	WB 1:500 - 1:2000. IHC 1:100 - 1:300. ELISA: 1:40000.. IF 1:50-200

Purification :	The antibody was affinity-purified from rabbit antiserum by affinity-chromatography using epitope-specific immunogen.
Concentration :	1 mg/ml
Storage Stability :	-15°C to -25°C/1 year(Do not lower than -25°C)
Observed Band :	47kD
Cell Pathway :	Inositol phosphate metabolism;
Background :	This gene encodes a member of the inositol phosphokinase family. The encoded protein has 3-kinase, 5-kinase and 6-kinase activities on phosphorylated inositol substrates. The encoded protein plays an important role in the biosynthesis of inositol 1,3,4,5,6-pentakisphosphate, and has a preferred 5-kinase activity. This gene may play a role in nuclear mRNA export. Pseudogenes of this gene are located on the long arm of chromosome 13 and the short arm of chromosome 19. [provided by RefSeq, Dec 2010],
Function :	catalytic activity:ATP + 1D-myo-inositol 1,4,5,6-tetrakisphosphate = ADP + 1D-myo-inositol 1,3,4,5,6-pentakisphosphate.,catalytic activity:ATP + 1D-myo-inositol 1,4,5-trisphosphate = ADP + 1D-myo-inositol 1,4,5,6-tetrakisphosphate.,function:Inositol phosphate kinase with a broad substrate specificity. Has a preference for inositol-1,4,5-trisphosphate (Ins(1,4,5)P3) and inositol 1,3,4,6-tetrakisphosphate (Ins(1,3,4,6)P4).,similarity:Belongs to the inositol phosphokinase (IPK) family.,tissue specificity:Ubiquitous, with the highest expression in skeletal muscle, liver, placenta, lung, peripheral blood leukocytes, kidney, spleen and colon.,
Subcellular Location :	Nucleus .
Expression :	Ubiquitous, with the highest expression in skeletal muscle, liver, placenta, lung, peripheral blood leukocytes, kidney, spleen and colon.
Tag :	hot
Sort :	8644
No4 :	1
Host :	Rabbit
Modifications :	Unmodified

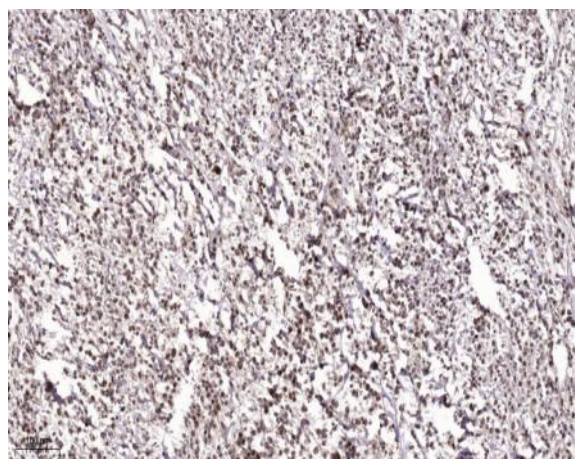
Products Images



Western Blot analysis of various cells using IPMK Polyclonal Antibody cells nucleus extracted by Minute TM Cytoplasmic and Nuclear Fractionation kit (SC-003, Inventbiotech, MN, USA).



Western blot analysis of lysates from HT-29 and COS7 cells, using IPMK Antibody. The lane on the right is blocked with the synthesized peptide.



Immunohistochemical analysis of paraffin-embedded human Colon cancer. 1, Antibody was diluted at 1:200(4° overnight). 2, Tris-EDTA,pH9.0 was used for antigen retrieval. 3,Secondary antibody was diluted at 1:200(room temperature, 45min).