

**MARCH4 Polyclonal Antibody**

<b>Catalog No :</b>	YT2645
<b>Reactivity :</b>	Human;Mouse
<b>Applications :</b>	IHC;IF;ELISA
<b>Target :</b>	MARCH4
<b>Gene Name :</b>	MARCH4
<b>Protein Name :</b>	E3 ubiquitin-protein ligase MARCH4
<b>Human Gene Id :</b>	57574
<b>Human Swiss Prot No :</b>	Q9P2E8
<b>Mouse Gene Id :</b>	381270
<b>Mouse Swiss Prot No :</b>	Q80TE3
<b>Immunogen :</b>	The antiserum was produced against synthesized peptide derived from human MARCH4. AA range:301-350
<b>Specificity :</b>	MARCH4 Polyclonal Antibody detects endogenous levels of 40606 protein.
<b>Formulation :</b>	Liquid in PBS containing 50% glycerol, 0.5% BSA and 0.02% sodium azide.
<b>Source :</b>	Polyclonal, Rabbit,IgG
<b>Dilution :</b>	IHC 1:100 - 1:300. ELISA: 1:40000.. IF 1:50-200
<b>Purification :</b>	The antibody was affinity-purified from rabbit antiserum by affinity-chromatography using epitope-specific immunogen.
<b>Concentration :</b>	1 mg/ml
<b>Storage Stability :</b>	-15°C to -25°C/1 year(Do not lower than -25°C)

---

**Molecularweight :** 46kD

---

**Background :** MARCH4 is a member of the MARCH family of membrane-bound E3 ubiquitin ligases (EC 6.3.2.19). MARCH enzymes add ubiquitin (see MIM 191339) to target lysines in substrate proteins, thereby signaling their vesicular transport between membrane compartments. MARCH4 reduces surface accumulation of several membrane glycoproteins by directing them to the endosomal compartment (Bartee et al., 2004 [PubMed 14722266]).[supplied by OMIM, Apr 2010],

---

**Function :** domain:The RING-CH-type zinc finger domain is required for E3 ligase activity.,function:E3 ubiquitin-protein ligase that may mediate ubiquitination of MHC-I and CD4, and promote their subsequent endocytosis and sorting to lysosomes via multivesicular bodies. E3 ubiquitin ligases accept ubiquitin from an E2 ubiquitin-conjugating enzyme in the form of a thioester and then directly transfer the ubiquitin to targeted substrates.,pathway:Protein modification; protein ubiquitination.,similarity:Contains 1 RING-CH-type zinc finger.,tissue specificity:Expressed in brain and placenta.,

---

**Subcellular Location :** Golgi apparatus membrane ; Multi-pass membrane protein .

---

**Expression :** Expressed in brain and placenta.

---

**Sort :** 9384

---

**No4 :** 1

---

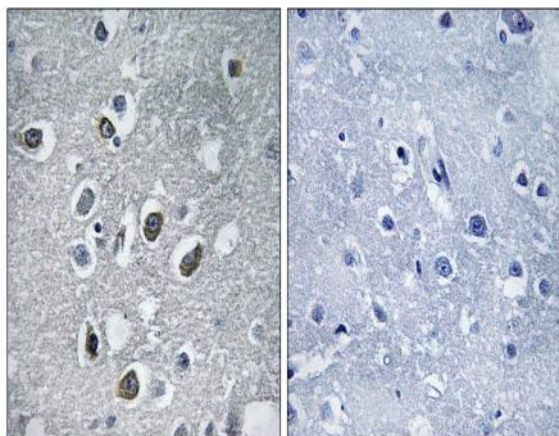
**Host :** Rabbit

---

**Modifications :** Unmodified

---

## Products Images



Immunohistochemistry analysis of paraffin-embedded human brain tissue, using MARCH4 Antibody. The picture on the right is blocked with the synthesized peptide.