

Involucrin Polyclonal Antibody

Catalog No :	YT2377
Reactivity :	Human;Rat;Mouse;
Applications :	WB;IHC;IF;ELISA
Target :	Involucrin
Gene Name :	IVL
Protein Name :	Involucrin
Human Gene Id :	3713
Human Swiss Prot No :	P07476
Mouse Swiss Prot No :	P48997
Immunogen :	The antiserum was produced against synthesized peptide derived from human Involucrin. AA range:536-585
Specificity :	Involucrin Polyclonal Antibody detects endogenous levels of Involucrin protein.
Formulation :	Liquid in PBS containing 50% glycerol, 0.5% BSA and 0.02% sodium azide.
Source :	Polyclonal, Rabbit,IgG
Dilution :	WB 1:500 - 1:2000. IHC 1:100 - 1:300. ELISA: 1:20000.. IF 1:50-200
Purification :	The antibody was affinity-purified from rabbit antiserum by affinity-chromatography using epitope-specific immunogen.
Concentration :	1 mg/ml
Storage Stability :	-15°C to -25°C/1 year(Do not lower than -25°C)
Observed Band :	68kD

Background : involucrin(IVL) Homo sapiens Involucrin, a component of the keratinocyte crosslinked envelope, is found in the cytoplasm and crosslinked to membrane proteins by transglutaminase. This gene is mapped to 1q21, among calpactin I light chain, trichohyalin, profillaggrin, loricrin, and calcyclin. [provided by RefSeq, Jul 2008],

Function : function:Part of the insoluble cornified cell envelope (CE) of stratified squamous epithelia.,PTM:Substrate of transglutaminase. Some glutamines and lysines are cross-linked to other involucrin molecules, to other proteins such as keratin, desmoplakin, periplakin and envoplakin, and to lipids like omega-hydroxyceramide.,similarity:Belongs to the involucrin family.,subcellular location:Constituent of the scaffolding of the cornified envelope.,subunit:Directly or indirectly cross-linked to cornifelin (CNFN).,tissue specificity:Keratinocytes of epidermis and other stratified squamous epithelia.,

Subcellular Location : Cytoplasm. Constituent of the scaffolding of the cornified envelope.

Expression : Keratinocytes of epidermis and other stratified squamous epithelia.

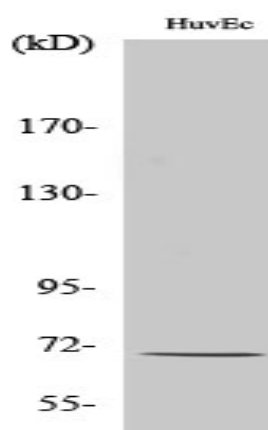
Sort : 8631

No4 : 1

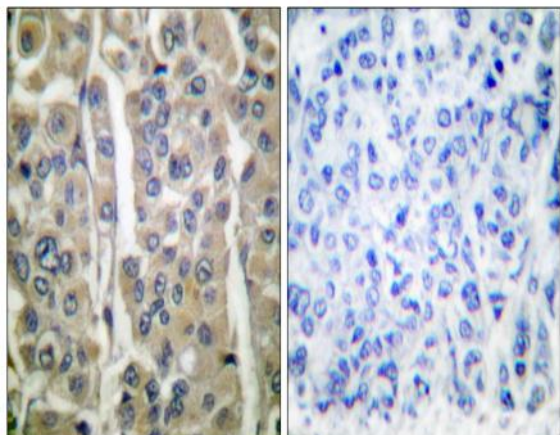
Host : Rabbit

Modifications : Unmodified

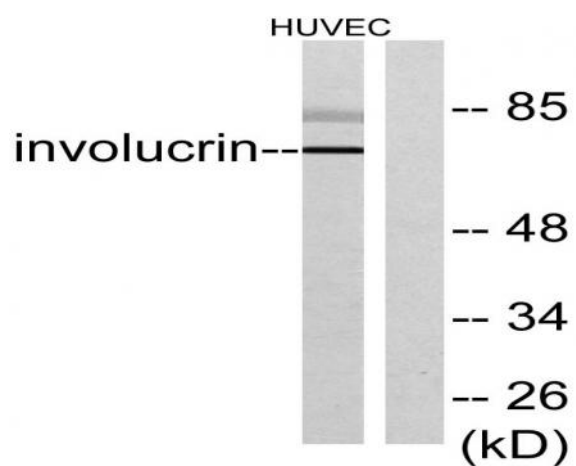
Products Images



Western Blot analysis of various cells using Involucrin Polyclonal Antibody



Immunohistochemistry analysis of paraffin-embedded human breast carcinoma tissue, using Involucrin Antibody. The picture on the right is blocked with the synthesized peptide.



Western blot analysis of lysates from HUVEC cells, using Involucrin Antibody. The lane on the right is blocked with the synthesized peptide.