

Mammaglobin B Polyclonal Antibody

Catalog No :	YT2632
Reactivity :	Human;Rat;Mouse;
Applications :	WB;IHC;IF;ELISA
Target :	Mammaglobin B
Gene Name :	SCGB2A1
Protein Name :	Mammaglobin-B
Human Gene Id :	4246
Human Swiss Prot No :	O75556
Immunogen :	The antiserum was produced against synthesized peptide derived from human Mammaglobin B. AA range:10-59
Specificity :	Mammaglobin B Polyclonal Antibody detects endogenous levels of Mammaglobin B protein.
Formulation :	Liquid in PBS containing 50% glycerol, 0.5% BSA and 0.02% sodium azide.
Source :	Polyclonal, Rabbit,IgG
Dilution :	WB 1:500 - 1:2000. IHC 1:100 - 1:300. IF 1:200 - 1:1000. ELISA: 1:20000. Not yet tested in other applications.
Purification :	The antibody was affinity-purified from rabbit antiserum by affinity-chromatography using epitope-specific immunogen.
Concentration :	1 mg/ml
Storage Stability :	-15°C to -25°C/1 year(Do not lower than -25°C)
Observed Band :	15kD

Background : function:May bind androgens and other steroids, may also bind estramustine, a chemotherapeutic agent used for prostate cancer. May be under transcriptional regulation of steroid hormones.,mass spectrometry: PubMed:9720917,similarity:Belongs to the secretoglobin family. Lipophilin subfamily.,subunit:Heterodimer of a lipophilin A and a lipophilin C (mammaglobin B) monomer associated head to head.,tissue specificity:Expressed in thymus, trachea, kidney, steroid responsive tissues (prostate, testis, uterus, breast and ovary) and salivary gland.,

Function : function:May bind androgens and other steroids, may also bind estramustine, a chemotherapeutic agent used for prostate cancer. May be under transcriptional regulation of steroid hormones.,mass spectrometry: PubMed:9720917,similarity:Belongs to the secretoglobin family. Lipophilin subfamily.,subunit:Heterodimer of a lipophilin A and a lipophilin C (mammaglobin B) monomer associated head to head.,tissue specificity:Expressed in thymus, trachea, kidney, steroid responsive tissues (prostate, testis, uterus, breast and ovary) and salivary gland.,

Subcellular Location : Secreted .

Expression : Expressed in thymus, trachea, kidney, steroid responsive tissues (prostate, testis, uterus, breast and ovary) and salivary gland.

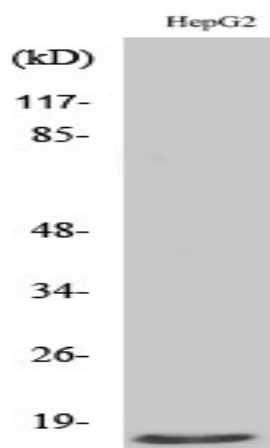
Sort : 9353

No4 : 1

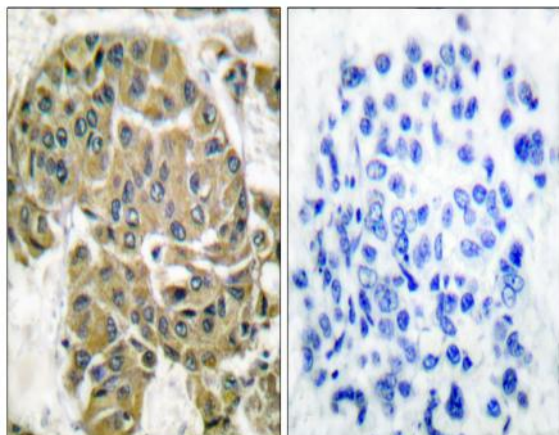
Host : Rabbit

Modifications : Unmodified

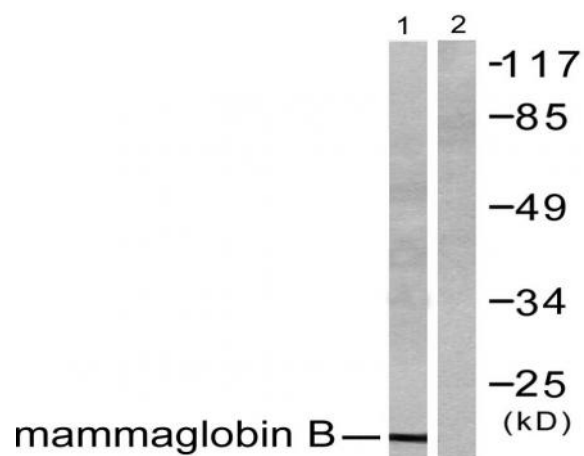
Products Images



Western Blot analysis of various cells using Mammaglobin B Polyclonal Antibody



Immunohistochemistry analysis of paraffin-embedded human breast carcinoma tissue, using Mammaglobin B Antibody. The picture on the right is blocked with the synthesized peptide.



Western blot analysis of lysates from HepG2 cells, using Mammaglobin B Antibody. The lane on the right is blocked with the synthesized peptide.