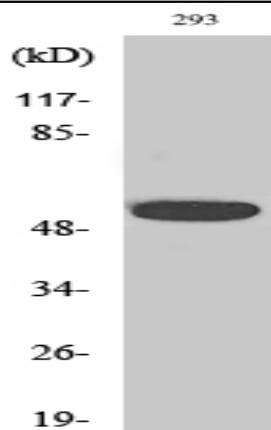


InsP6 Kinase 3 Polyclonal Antibody

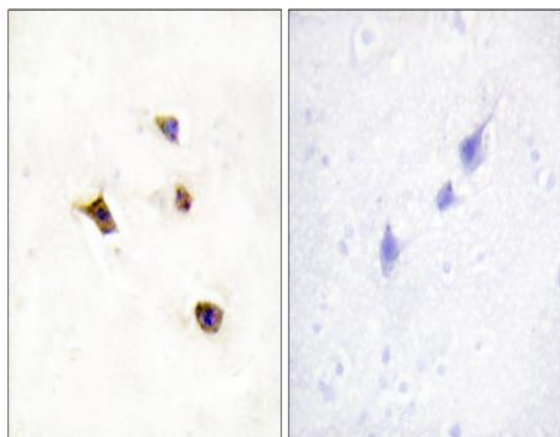
Catalog No :	YT2356
Reactivity :	Human;Mouse
Applications :	WB;IHC;IF;ELISA
Target :	InsP6 Kinase 3
Fields :	>>Phosphatidylinositol signaling system
Gene Name :	IP6K3
Protein Name :	Inositol hexakisphosphate kinase 3
Human Gene Id :	117283
Human Swiss Prot No :	Q96PC2
Mouse Gene Id :	271424
Mouse Swiss Prot No :	Q8BWD2
Immunogen :	The antiserum was produced against synthesized peptide derived from human IP6K3. AA range:201-250
Specificity :	InsP6 Kinase 3 Polyclonal Antibody detects endogenous levels of InsP6 Kinase 3 protein.
Formulation :	Liquid in PBS containing 50% glycerol, 0.5% BSA and 0.02% sodium azide.
Source :	Polyclonal, Rabbit,IgG
Dilution :	WB 1:500 - 1:2000. IHC 1:100 - 1:300. IF 1:200 - 1:1000. ELISA: 1:20000. Not yet tested in other applications.
Purification :	The antibody was affinity-purified from rabbit antiserum by affinity-chromatography using epitope-specific immunogen.

Concentration :	1 mg/ml
Storage Stability :	-15°C to -25°C/1 year(Do not lower than -25°C)
Observed Band :	51kD
Background :	This gene encodes a protein that belongs to the inositol phosphokinase (IPK) family. This protein is likely responsible for the conversion of inositol hexakisphosphate (InsP6) to diphosphoinositol pentakisphosphate (InsP7/PP-InsP5). It may also convert 1,3,4,5,6-pentakisphosphate (InsP5) to PP-InsP4. Alternative splicing results in multiple transcript variants encoding the same protein.[provided by RefSeq, Dec 2008],
Function :	catalytic activity:ATP + 1D-myo-inositol 1,3,4,5,6-pentakisphosphate = ADP + diphospho-1D-myo-inositol tetrakisphosphate (isomeric configuration unknown).,catalytic activity:ATP + 1D-myo-inositol hexakisphosphate = ADP + 5-diphospho-1D-myo-inositol (1,2,3,4,6)pentakisphosphate.,function:Converts inositol hexakisphosphate (InsP6) to diphosphoinositol pentakisphosphate (InsP7/PP-InsP5). Converts 1,3,4,5,6-pentakisphosphate (InsP5) to PP-InsP4.,similarity:Belongs to the inositol phosphokinase (IPK) family.,tissue specificity:Detected in brain.,
Subcellular Location :	Cytoplasm .
Expression :	Detected in brain.
Sort :	8580
No4 :	1
Host :	Rabbit
Modifications :	Unmodified

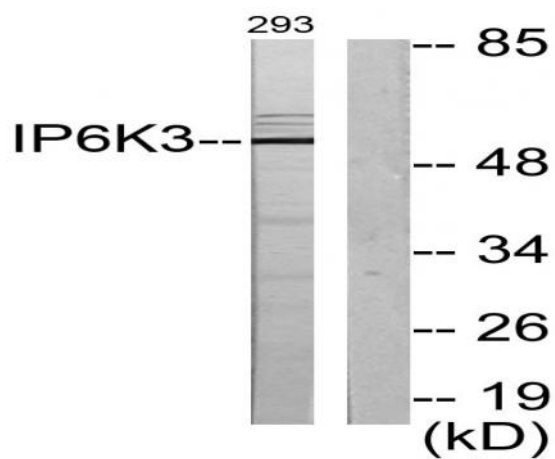
Products Images



Western Blot analysis of various cells using InsP6 Kinase 3 Polyclonal Antibody



Immunohistochemistry analysis of paraffin-embedded human brain tissue, using IP6K3 Antibody. The picture on the right is blocked with the synthesized peptide.



Western blot analysis of lysates from 293 cells, using IP6K3 Antibody. The lane on the right is blocked with the synthesized peptide.