

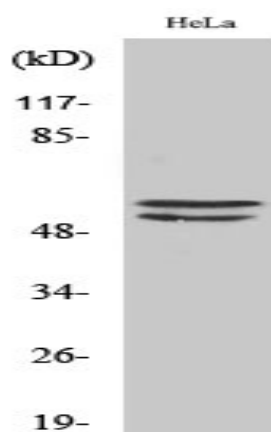
Lyn Polyclonal Antibody

| | |
|------------------------------|---|
| Catalog No : | YT2608 |
| Reactivity : | Human;Mouse;Rat |
| Applications : | WB;IHC;IF;ELISA |
| Target : | Lyn |
| Fields : | >>Chemokine signaling pathway;>>NF-kappa B signaling pathway;>>Platelet activation;>>B cell receptor signaling pathway;>>Fc epsilon RI signaling pathway;>>Fc gamma R-mediated phagocytosis;>>Long-term depression;>>Epithelial cell signaling in Helicobacter pylori infection;>>Kaposi sarcoma-associated herpesvirus infection;>>Epstein-Barr virus infection;>>Viral carcinogenesis;>>Lipid and atherosclerosis |
| Gene Name : | LYN |
| Protein Name : | Tyrosine-protein kinase Lyn |
| Human Gene Id : | 4067 |
| Human Swiss Prot No : | P07948 |
| Mouse Gene Id : | 17096 |
| Mouse Swiss Prot No : | P25911 |
| Rat Gene Id : | 81515 |
| Rat Swiss Prot No : | Q07014 |
| Immunogen : | The antiserum was produced against synthesized peptide derived from human Lyn. AA range:463-512 |
| Specificity : | Lyn Polyclonal Antibody detects endogenous levels of Lyn protein. |
| Formulation : | Liquid in PBS containing 50% glycerol, 0.5% BSA and 0.02% sodium azide. |

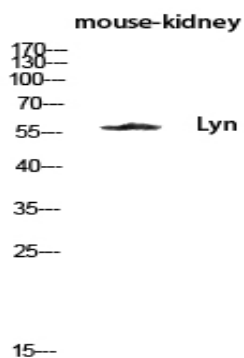
| | |
|-------------------------------|--|
| Source : | Polyclonal, Rabbit,IgG |
| Dilution : | WB 1:500 - 1:2000. IHC 1:100 - 1:300. ELISA: 1:5000.. IF 1:50-200 |
| Purification : | The antibody was affinity-purified from rabbit antiserum by affinity-chromatography using epitope-specific immunogen. |
| Concentration : | 1 mg/ml |
| Storage Stability : | -15°C to -25°C/1 year(Do not lower than -25°C) |
| Observed Band : | 53,56kD |
| Cell Pathway : | Chemokine;B_Cell_Antigen;Fc epsilon RI;Fc gamma R-mediated phagocytosis;Long-term depression;Epithelial cell signaling in Helicobacter pylori infection; |
| Background : | This gene encodes a tyrosine protein kinase, which maybe involved in the regulation of mast cell degranulation, and erythroid differentiation. Alternatively spliced transcript variants encoding different isoforms have been found for this gene. [provided by RefSeq, Jul 2011], |
| Function : | catalytic activity:ATP + a [protein]-L-tyrosine = ADP + a [protein]-L-tyrosine phosphate.,similarity:Belongs to the protein kinase superfamily. Tyr protein kinase family.,similarity:Belongs to the protein kinase superfamily. Tyr protein kinase family. SRC subfamily.,similarity:Contains 1 protein kinase domain.,similarity:Contains 1 SH2 domain.,similarity:Contains 1 SH3 domain.,subunit:Interacts with phosphorylated LIME1 and with CD79A upon BCR activation. Interacts with Epstein-Barr virus LMP2A. Interacts with TGFB111. Interaction, via the SH2 and SH3, domains with MUC1 is stimulated by IL7 and, the subsequent phosphorylation increases the binding between MUC1 and CTNNB1/beta-catenin. Interacts with PPP1R15A via the SH3 domain.,tissue specificity:Expressed in primary neuroblastoma tumors., |
| Subcellular Location : | Cell membrane. Nucleus. Cytoplasm. Cytoplasm, perinuclear region. Golgi apparatus. Membrane ; Lipid-anchor . Accumulates in the nucleus by inhibition of CRM1-mediated nuclear export. Nuclear accumulation is increased by inhibition of its kinase activity. The trafficking from the Golgi apparatus to the plasma membrane occurs in a kinase domain-dependent but kinase activity independent manner and is mediated by exocytic vesicular transport. Detected on plasma membrane lipid rafts. |
| Expression : | Detected in monocytes (at protein level). Detected in placenta, and in fetal brain, lung, liver and kidney. Widely expressed in a variety of organs, tissues, and cell types such as epidermoid, hematopoietic, and neuronal cells. Expressed in primary neuroblastoma tumors. |

| | |
|------------------------|-------------------|
| Tag : | <u>orthogonal</u> |
| Sort : | <u>9305</u> |
| No4 : | <u>1</u> |
| Host : | <u>Rabbit</u> |
| Modifications : | <u>Unmodified</u> |

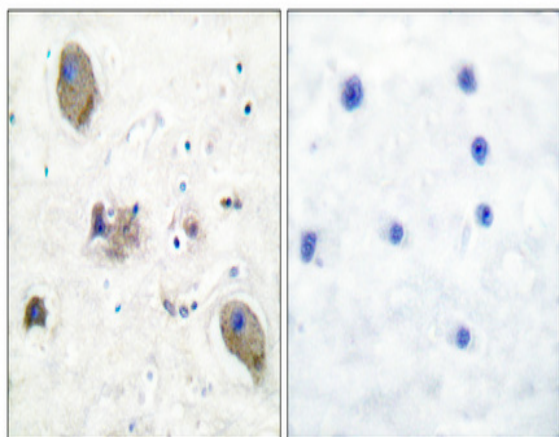
Products Images



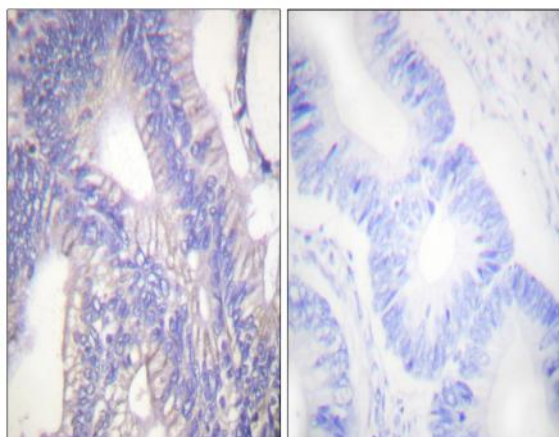
Western Blot analysis of various cells using Lyn Polyclonal Antibody diluted at 1:500



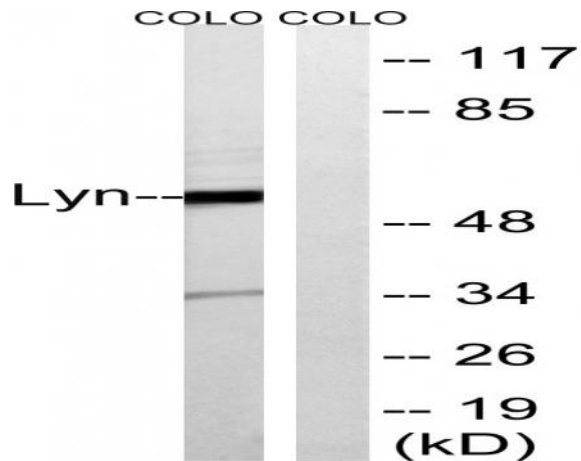
Western blot analysis of mouse-kidney lysis using Lyn antibody. Antibody was diluted at 1:500



Immunohistochemical analysis of paraffin-embedded Human breast cancer. Antibody was diluted at 1:100(4° overnight). High-pressure and temperature Tris-EDTA,pH8.0 was used for antigen retrieval. Negative contrl (right) obtaned from antibody was pre-absorbed by immunogen peptide.



Immunohistochemistry analysis of paraffin-embedded human colon carcinoma tissue, using Lyn Antibody. The picture on the right is blocked with the synthesized peptide.



Western blot analysis of lysates from COLO cells, treated with H₂O₂ 100uM 30', using Lyn Antibody. The lane on the right is blocked with the synthesized peptide.