

IL-2 Polyclonal Antibody

Catalog No :	YT2323
Reactivity :	Human;Mouse;Rat
Applications :	WB;IHC;IF;ELISA
Target :	IL-2
Fields :	>>Cytokine-cytokine receptor interaction;>>Viral protein interaction with cytokine and cytokine receptor;>>PI3K-Akt signaling pathway;>>C-type lectin receptor signaling pathway;>>JAK-STAT signaling pathway;>>Th1 and Th2 cell differentiation;>>Th17 cell differentiation;>>T cell receptor signaling pathway;>>Intestinal immune network for IgA production;>>Type I diabetes mellitus;>>Yersinia infection;>>Chagas disease;>>Measles;>>Human T-cell leukemia virus 1 infection;>>Coronavirus disease - COVID-19;>>Pathways in cancer;>>Autoimmune thyroid disease;>>Inflammatory bowel disease;>>Allograft rejection;>>Graft-versus-host disease
Gene Name :	IL2
Protein Name :	Interleukin-2
Human Gene Id :	3558
Human Swiss Prot No :	P60568
Mouse Swiss Prot No :	P04351
Rat Gene Id :	116562
Rat Swiss Prot No :	P17108
Immunogen :	The antiserum was produced against synthesized peptide derived from human IL-2. AA range:16-65
Specificity :	IL-2 Polyclonal Antibody detects endogenous levels of IL-2 protein.
Formulation :	Liquid in PBS containing 50% glycerol, 0.5% BSA and 0.02% sodium azide.

Source :	Polyclonal, Rabbit,IgG
Dilution :	WB 1:500 - 1:2000. IHC: 1:100-300 ELISA: 1:20000. IF 1:100-300 Not yet tested in other applications.
Purification :	The antibody was affinity-purified from rabbit antiserum by affinity-chromatography using epitope-specific immunogen.
Concentration :	1 mg/ml
Storage Stability :	-15°C to -25°C/1 year(Do not lower than -25°C)
Observed Band :	15kD
Cell Pathway :	Cytokine-cytokine receptor interaction;Jak_STAT;T_Cell_Receptor;Intestinal immune network for IgA production;Type I diabetes mellitus;Autoimmune thyroid disease;Allograft rejection;Graft-versus-host d
Background :	The protein encoded by this gene is a secreted cytokine that is important for the proliferation of T and B lymphocytes. The receptor of this cytokine is a heterotrimeric protein complex whose gamma chain is also shared by interleukin 4 (IL4) and interleukin 7 (IL7). The expression of this gene in mature thymocytes is monoallelic, which represents an unusual regulatory mode for controlling the precise expression of a single gene. The targeted disruption of a similar gene in mice leads to ulcerative colitis-like disease, which suggests an essential role of this gene in the immune response to antigenic stimuli. [provided by RefSeq, Jul 2008],
Function :	disease:A chromosomal aberration involving IL2 is found in a form of T-cell acute lymphoblastic leukemia (T-ALL). Translocation t(4;16)(q26;p13) with involves TNFRSF17.,function:Produced by T-cells in response to antigenic or mitogenic stimulation, this protein is required for T-cell proliferation and other activities crucial to regulation of the immune response. Can stimulate B-cells, monocytes, lymphokine-activated killer cells, natural killer cells, and glioma cells.,online information:Interleukin-2 entry,online information:The Singapore human mutation and polymorphism database,pharmaceutical:Available under the name Proleukin (Chiron). Used in patients with renal cell carcinoma or metastatic melanoma.,similarity:Belongs to the IL-2 family.,
Subcellular Location :	Secreted.
Expression :	Blood,PCR rescued clones,Placenta,Spleen,
Tag :	orthogonal
Sort :	1

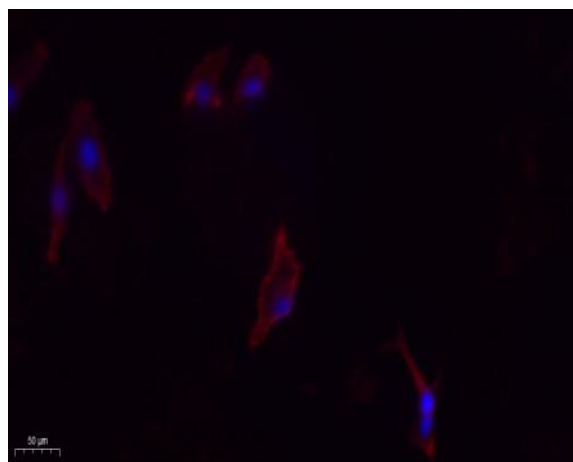
No3 : ab92381

No4 : 1

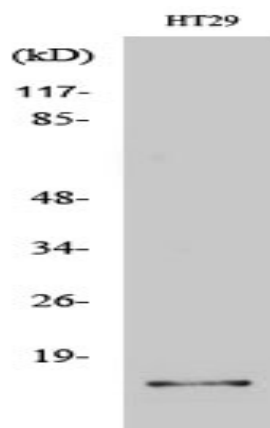
Host : Rabbit

Modifications : Unmodified

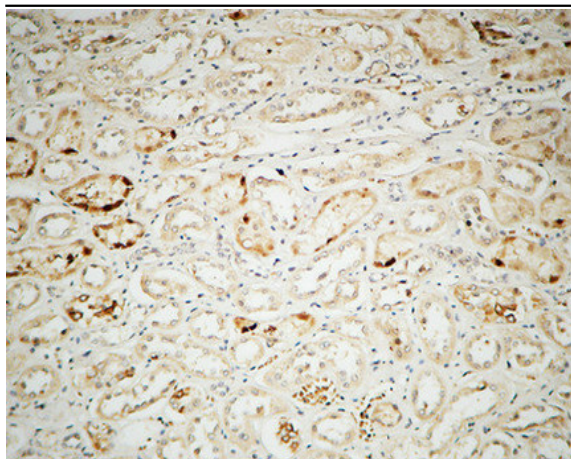
Products Images



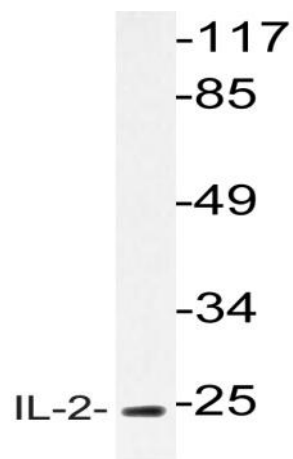
Immunofluorescence analysis of A549. 1, primary Antibody (red) was diluted at 1:200 (4 °C overnight). 2, Goat Anti Rabbit IgG (H&L) - Alexa Fluor 594 Secondary antibody was diluted at 1:1000 (room temperature, 50 min). 3, Picture B: DAPI (blue) 10 min.



Western Blot analysis of various cells using IL-2 Polyclonal Antibody



Immunohistochemical analysis of paraffin-embedded Human kidney. 1, Antibody was diluted at 1:100(4° overnight). 2, High-pressure and temperature EDTA, pH8.0 was used for antigen retrieval. 3,Secondary antibody was diluted at 1:200(room temperature, 30min).



Western blot analysis of lysate from HT-29 cells, using IL-2 antibody.