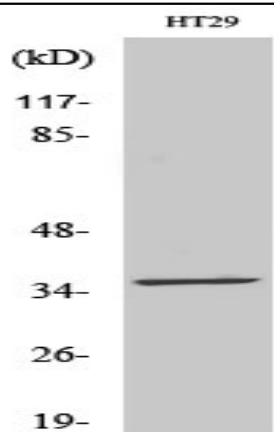


LTB4DH Polyclonal Antibody

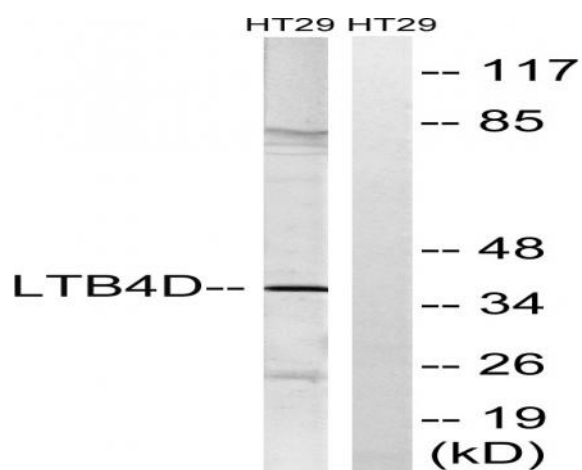
Catalog No :	YT2597
Reactivity :	Human;Rat;Mouse;
Applications :	WB;ELISA
Target :	LTB4DH
Gene Name :	PTGR1
Protein Name :	Prostaglandin reductase 1
Human Gene Id :	22949
Human Swiss Prot No :	Q14914
Mouse Swiss Prot No :	Q91YR9
Immunogen :	The antiserum was produced against synthesized peptide derived from human PTGR1. AA range:75-124
Specificity :	LTB4DH Polyclonal Antibody detects endogenous levels of LTB4DH protein.
Formulation :	Liquid in PBS containing 50% glycerol, 0.5% BSA and 0.02% sodium azide.
Source :	Polyclonal, Rabbit,IgG
Dilution :	WB 1:500 - 1:2000. ELISA: 1:5000. Not yet tested in other applications.
Purification :	The antibody was affinity-purified from rabbit antiserum by affinity-chromatography using epitope-specific immunogen.
Concentration :	1 mg/ml
Storage Stability :	-15°C to -25°C/1 year(Do not lower than -25°C)
Observed Band :	36kD

Background :	This gene encodes an enzyme that is involved in the inactivation of the chemotactic factor, leukotriene B4. The encoded protein specifically catalyzes the NADP+ dependent conversion of leukotriene B4 to 12-oxo-leukotriene B4. A pseudogene of this gene is found on chromosome 1. Alternative splicing results in multiple transcript variants. [provided by RefSeq, Mar 2009],
Function :	catalytic activity:11-alpha-hydroxy-9,15-dioxoprost-5-enoate + NAD(P)(+) = (5Z)-(13E)-11-alpha-hydroxy-9,15-dioxoprost-5,13-dienoate + NAD(P)H.,catalytic activity:n-alkanal + NAD(P)(+) = alk-2-enal + NAD(P)H.,function:Functions as 15-oxo-prostaglandin 13-reductase and acts on 15-oxo-PGE1, 15-oxo-PGE2 and 15-oxo-PGE2-alpha. Has no activity towards PGE1, PGE2 and PGE2-alpha (By similarity). Catalyzes the conversion of leukotriene B4 into its biologically less active metabolite, 12-oxo-leukotriene B4. This is an initial and key step of metabolic inactivation of leukotriene B4.,similarity:Belongs to the NADP-dependent oxidoreductase L4BD family.,subunit:Monomer or homodimer.,tissue specificity:High expression in the kidney, liver, and intestine but not in leukocytes.,
Subcellular Location :	Cytoplasm .
Expression :	High expression in the kidney, liver, and intestine but not in leukocytes.
Tag :	hot
Sort :	9276
No4 :	1
Host :	Rabbit
Modifications :	Unmodified

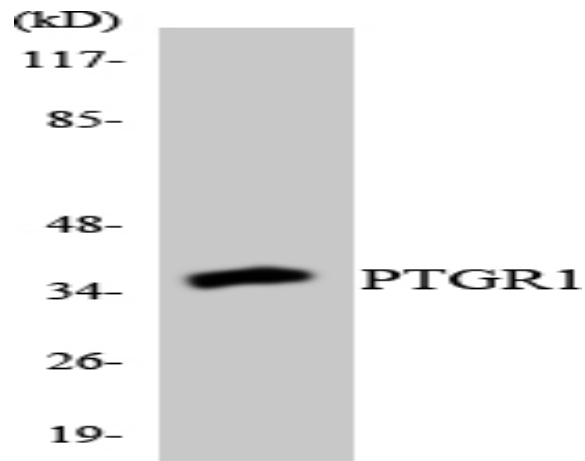
Products Images



Western Blot analysis of various cells using LTB4DH Polyclonal Antibody



Western blot analysis of lysates from HT-29 cells, using PTGR1 Antibody. The lane on the right is blocked with the synthesized peptide.



Western blot analysis of the lysates from 293 cells using PTGR1 antibody.