

## LRP3 Polyclonal Antibody

<b>Catalog No :</b>	YT2592
<b>Reactivity :</b>	Human;Mouse;Rat
<b>Applications :</b>	WB;IHC
<b>Target :</b>	LRP3
<b>Gene Name :</b>	LRP3
<b>Protein Name :</b>	Low-density lipoprotein receptor-related protein 3
<b>Human Gene Id :</b>	4037
<b>Human Swiss Prot No :</b>	O75074
<b>Rat Gene Id :</b>	89787
<b>Rat Swiss Prot No :</b>	O88204
<b>Immunogen :</b>	The antiserum was produced against synthesized peptide derived from human LRP3. AA range:17-66
<b>Specificity :</b>	LRP3 Polyclonal Antibody detects endogenous levels of LRP3 protein.
<b>Formulation :</b>	Liquid in PBS containing 50% glycerol, 0.5% BSA and 0.02% sodium azide.
<b>Source :</b>	Polyclonal, Rabbit,IgG
<b>Dilution :</b>	WB 1:500-2000;IHC 1:50-300
<b>Purification :</b>	The antibody was affinity-purified from rabbit antiserum by affinity-chromatography using epitope-specific immunogen.
<b>Concentration :</b>	1 mg/ml
<b>Storage Stability :</b>	-15°C to -25°C/1 year(Do not lower than -25°C)

**Observed Band :** 80kD

---

**Background :** function:Probable receptor, which may be involved in the internalization of lipophilic molecules and/or signal transduction. Its precise role is however unclear, since it does not bind to very low density lipoprotein (VLDL) or to LRPAP1 in vitro.,similarity:Belongs to the LDLR family.,similarity:Contains 2 CUB domains.,similarity:Contains 4 LDL-receptor class A domains.,subunit:Binds GGA1 and GGA2.,tissue specificity:Widely expressed. Highly expressed in skeletal muscle and ovary. Expressed at intermediate level in heart, brain, liver, pancreas, prostate and small intestine. Weakly expressed in testis, colon and leukocyte.,

---

**Function :** function:Probable receptor, which may be involved in the internalization of lipophilic molecules and/or signal transduction. Its precise role is however unclear, since it does not bind to very low density lipoprotein (VLDL) or to LRPAP1 in vitro.,similarity:Belongs to the LDLR family.,similarity:Contains 2 CUB domains.,similarity:Contains 4 LDL-receptor class A domains.,subunit:Binds GGA1 and GGA2.,tissue specificity:Widely expressed. Highly expressed in skeletal muscle and ovary. Expressed at intermediate level in heart, brain, liver, pancreas, prostate and small intestine. Weakly expressed in testis, colon and leukocyte.,

---

**Subcellular Location :** Membrane ; Single-pass type I membrane protein . Membrane, coated pit .

---

**Expression :** Widely expressed. Highly expressed in skeletal muscle and ovary. Expressed at intermediate level in heart, brain, liver, pancreas, prostate and small intestine. Weakly expressed in testis, colon and leukocyte.

---

**Sort :** 9250

---

**No4 :** 1

---

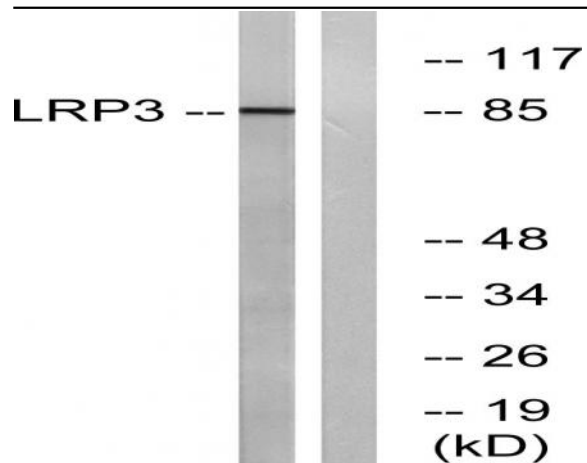
**Host :** Rabbit

---

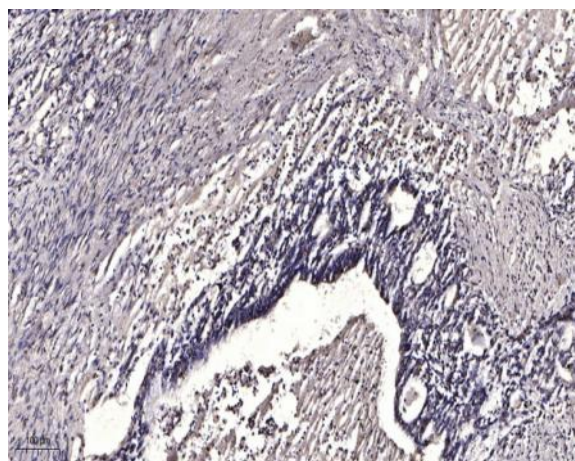
**Modifications :** Unmodified

---

## Products Images



Western blot analysis of lysates from RAW264.7 cells, using LRP3 Antibody. The lane on the right is blocked with the synthesized peptide.



Immunohistochemical analysis of paraffin-embedded human Gastric adenocarcinoma. 1, Antibody was diluted at 1:200(4° overnight). 2, Tris-EDTA,pH9.0 was used for antigen retrieval. 3,Secondary antibody was diluted at 1:200(room temperature, 45min).