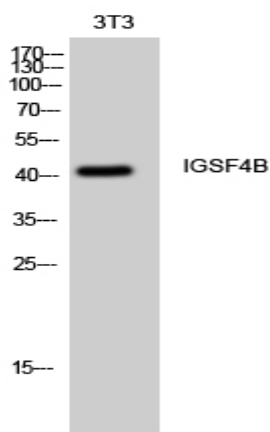


IGSF4B Polyclonal Antibody

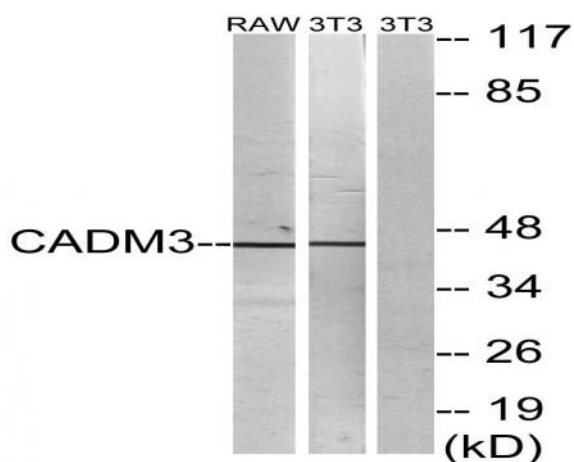
| | |
|------------------------------|---|
| Catalog No : | YT2294 |
| Reactivity : | Human;Mouse;Rat |
| Applications : | WB;IHC;IF;ELISA |
| Target : | IGSF4B |
| Fields : | >>Cell adhesion molecules |
| Gene Name : | CADM3 |
| Protein Name : | Cell adhesion molecule 3 |
| Human Gene Id : | 57863 |
| Human Swiss Prot No : | Q8N126 |
| Mouse Gene Id : | 94332 |
| Mouse Swiss Prot No : | Q99N28 |
| Rat Gene Id : | 360882 |
| Rat Swiss Prot No : | Q1WIM3 |
| Immunogen : | The antiserum was produced against synthesized peptide derived from human CADM3. AA range:141-190 |
| Specificity : | IGSF4B Polyclonal Antibody detects endogenous levels of IGSF4B protein. |
| Formulation : | Liquid in PBS containing 50% glycerol, 0.5% BSA and 0.02% sodium azide. |
| Source : | Polyclonal, Rabbit,IgG |
| Dilution : | WB 1:500 - 1:2000. IHC 1:100 - 1:300. IF 1:200 - 1:1000. ELISA: 1:5000. Not yet tested in other applications. |

| | |
|-------------------------------|--|
| Purification : | The antibody was affinity-purified from rabbit antiserum by affinity-chromatography using epitope-specific immunogen. |
| Concentration : | 1 mg/ml |
| Storage Stability : | -15°C to -25°C/1 year(Do not lower than -25°C) |
| Observed Band : | 43kD |
| Cell Pathway : | Cell adhesion molecules (CAMs); |
| Background : | cell adhesion molecule 3(CADM3) Homo sapiens IGSF4B is a brain-specific protein related to the calcium-independent cell-cell adhesion molecules known as nectins (see PVRL3; MIM 607147) (Kakunaga et al., 2005 [PubMed 15741237]).[supplied by OMIM, Mar 2008], |
| Function : | domain:The cytoplasmic region mediates interaction with EPB41L1, DLG3, MPP6 and CASK.,function:Involved in the cell-cell adhesion. Has both calcium-independent homophilic cell-cell adhesion activity and calcium-independent heterophilic cell-cell adhesion activity with IGSF4, PVRL1 and PVRL3. Interaction with EPB41L1 may regulate structure or function of cell-cell junctions.,induction:Markedly in glioma cell lines and prostate cancer cell lines.,similarity:Belongs to the nectin family.,similarity:Contains 1 Ig-like V-type (immunoglobulin-like) domain.,similarity:Contains 2 Ig-like C2-type (immunoglobulin-like) domains.,subcellular location:Localized at the cell-cell attached sites of the plasma membrane.,subunit:Homodimer. Can form trans-heterodimers with PVRL3/nectin-3. Interacts with EPB41L1, DLG3, MPP6 and CASK.,tissue specificity:Isoform 1 is expressed mainly in adult and fetal brain. |
| Subcellular Location : | Cell membrane ; Single-pass type I membrane protein . Cell junction . |
| Expression : | Isoform 1 is expressed mainly in adult and fetal brain. Isoform 2 is highly expressed in adult brain and weakly expressed in placenta. In brain, Isoform 2 is highly expressed in cerebellum. |
| Sort : | 8378 |
| No4 : | 1 |
| Host : | Rabbit |
| Modifications : | Unmodified |

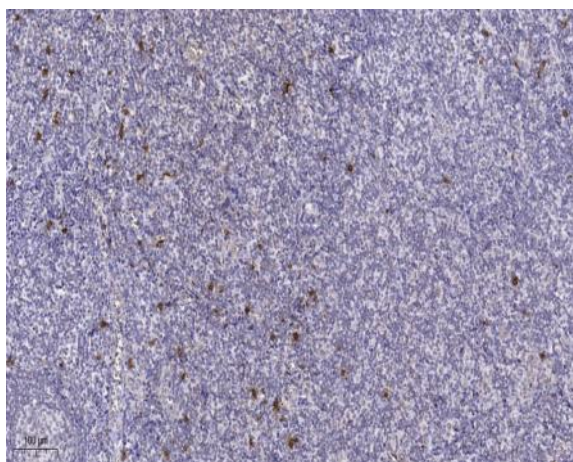
Products Images



Western Blot analysis of 3T3 cells using IGSF4B Polyclonal Antibody



Western blot analysis of lysates from NIH/3T3 and RAW264.7 cells, using CADM3 Antibody. The lane on the right is blocked with the synthesized peptide.



Immunohistochemical analysis of paraffin-embedded human tonsil. 1, Tris-EDTA, pH 9.0 was used for antigen retrieval. 2 Antibody was diluted at 1:200 (4° overnight). 3, Secondary antibody was diluted at 1:200 (room temperature, 45min).