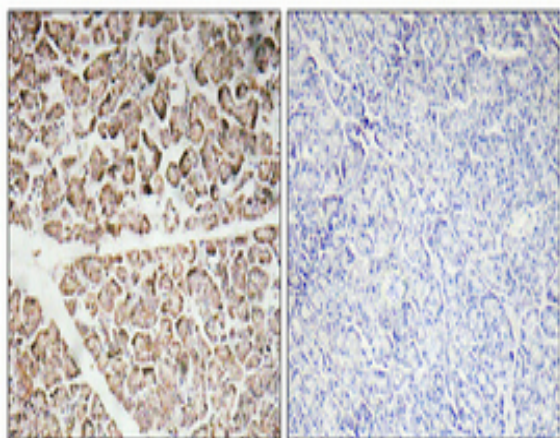


IGF-I Polyclonal Antibody

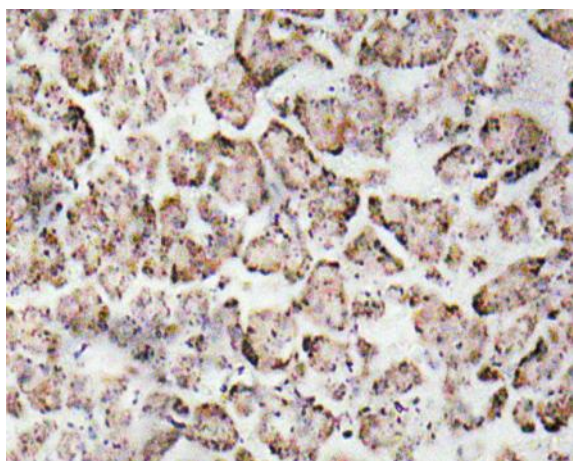
Catalog No :	YT2288
Reactivity :	Human;Mouse;Rat
Applications :	IHC;IF;ELISA
Target :	IGF-I
Gene Name :	IGF1
Protein Name :	Insulin-like growth factor I
Human Gene Id :	3479
Human Swiss Prot No :	P05019
Mouse Gene Id :	16000
Rat Gene Id :	24482
Rat Swiss Prot No :	P08025
Immunogen :	The antiserum was produced against synthesized peptide derived from human IGF-I. AA range:100-149
Specificity :	IGF-I Polyclonal Antibody detects endogenous levels of IGF-I protein.
Formulation :	Liquid in PBS containing 50% glycerol, 0.5% BSA and 0.02% sodium azide.
Source :	Polyclonal, Rabbit,IgG
Dilution :	IHC 1:100 - 1:300. ELISA: 1:10000.. IF 1:50-200
Purification :	The antibody was affinity-purified from rabbit antiserum by affinity-chromatography using epitope-specific immunogen.
Concentration :	1 mg/ml

Storage Stability :	<u>-15°C to -25°C/1 year(Do not lower than -25°C)</u>
Molecularweight :	<u>17-22kD</u>
Cell Pathway :	<u>Oocyte meiosis;p53;mTOR;Focal adhesion;Long-term depression;Progesterone-mediated oocyte maturation;Aldosterone-regulated sodium reabsorption;Pathways in cancer;Glioma;Prostate cancer;Melanoma;Hypert</u>
Background :	<u>The protein encoded by this gene is similar to insulin in function and structure and is a member of a family of proteins involved in mediating growth and development. The encoded protein is processed from a precursor, bound by a specific receptor, and secreted. Defects in this gene are a cause of insulin-like growth factor I deficiency. Alternative splicing results in multiple transcript variants encoding different isoforms that may undergo similar processing to generate mature protein. [provided by RefSeq, Sep 2015],</u>
Function :	<u>disease:Defects in IGF1 are the cause of insulin-like growth factor I deficiency (IGF1 deficiency) [MIM:608747]. IGF1 deficiency is an autosomal recessive disorder characterized by growth retardation, sensorineural deafness and mental retardation.,function:The insulin-like growth factors, isolated from plasma, are structurally and functionally related to insulin but have a much higher growth-promoting activity.,online information:Insulin-like growth factor 1 entry,online information:The Singapore human mutation and polymorphism database,similarity:Belongs to the insulin family.,</u>
Subcellular Location :	<u>extracellular region,extracellular space,plasma membrane,insulin-like growth factor binding protein complex,platelet alpha granule lumen,alphav-beta3 integrin-IGF-1-IGF1R complex,insulin-like growth factor ternary complex,exocytic vesicle,</u>
Expression :	<u>Brain,Liver,PCR rescued clones,</u>
Tag :	<u>hot</u>
Sort :	<u>1015</u>
No1 :	<u>ab9572</u>
No2 :	<u>ab9572</u>
No4 :	<u>1</u>
Host :	<u>Rabbit</u>
Modifications :	<u>Unmodified</u>

Products Images



Immunohistochemical analysis of paraffin-embedded Human pancreas. Antibody was diluted at 1:100(4° overnight). High-pressure and temperature Tris-EDTA,pH8.0 was used for antigen retrieval. Negative contrl (right) obtained from antibody was pre-absorbed by immunogen peptide.



Immunohistochemistry analysis of IGF-I antibody in paraffin-embedded human pancreas tissue.