

## IGFBP7 Polyclonal Antibody

<b>Catalog No :</b>	YT2287
<b>Reactivity :</b>	Human;Mouse;Rat
<b>Applications :</b>	IHC;IF;ELISA
<b>Target :</b>	IGFBP7
<b>Gene Name :</b>	IGFBP7
<b>Protein Name :</b>	Insulin-like growth factor-binding protein 7
<b>Human Gene Id :</b>	3490
<b>Human Swiss Prot No :</b>	Q16270
<b>Mouse Gene Id :</b>	29817
<b>Mouse Swiss Prot No :</b>	Q61581
<b>Immunogen :</b>	The antiserum was produced against synthesized peptide derived from human IBP7. AA range:191-240
<b>Specificity :</b>	IGFBP7 Polyclonal Antibody detects endogenous levels of IGFBP7 protein.
<b>Formulation :</b>	Liquid in PBS containing 50% glycerol, 0.5% BSA and 0.02% sodium azide.
<b>Source :</b>	Polyclonal, Rabbit,IgG
<b>Dilution :</b>	IHC 1:100 - 1:300. ELISA: 1:40000.. IF 1:50-200
<b>Purification :</b>	The antibody was affinity-purified from rabbit antiserum by affinity-chromatography using epitope-specific immunogen.
<b>Concentration :</b>	1 mg/ml
<b>Storage Stability :</b>	-15°C to -25°C/1 year(Do not lower than -25°C)

---

**Molecularweight :** 29kD

---

**Background :** This gene encodes a member of the insulin-like growth factor (IGF)-binding protein (IGFBP) family. IGFBPs bind IGFs with high affinity, and regulate IGF availability in body fluids and tissues and modulate IGF binding to its receptors. This protein binds IGF-I and IGF-II with relatively low affinity, and belongs to a subfamily of low-affinity IGFBPs. It also stimulates prostacyclin production and cell adhesion. Alternatively spliced transcript variants encoding different isoforms have been described for this gene, and one variant has been associated with retinal arterial macroaneurysm (PMID:21835307). [provided by RefSeq, Dec 2011],

---

**Function :** function: Binds IGF-I and IGF-II with a relatively low affinity. Stimulates prostacyclin (PGI<sub>2</sub>) production. Stimulates cell adhesion., PTM: N-glycosylated., similarity: Contains 1 Ig-like C2-type (immunoglobulin-like) domain., similarity: Contains 1 IGFBP N-terminal domain., similarity: Contains 1 Kazal-like domain., subunit: May interact with VPS24/CHMP3; the relevance of such interaction however remains unclear.,

---

**Subcellular Location :** Secreted.

---

**Expression :** Leptomeninges, Testis, Urinary bladder carcinoma, Uterus,

---

**Sort :** 8355

---

**No4 :** 1

---

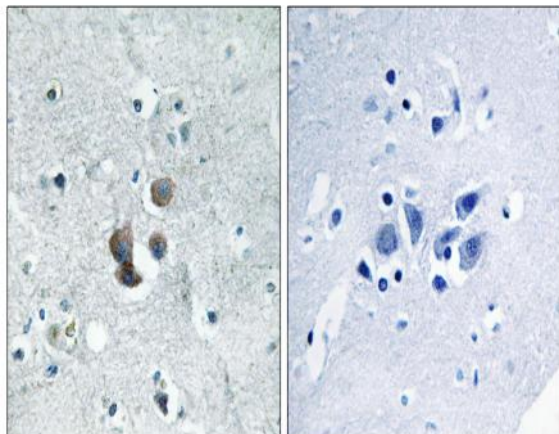
**Host :** Rabbit

---

**Modifications :** Unmodified

---

## Products Images



Immunohistochemistry analysis of paraffin-embedded human brain tissue, using IBP7 Antibody. The picture on the right is blocked with the synthesized peptide.