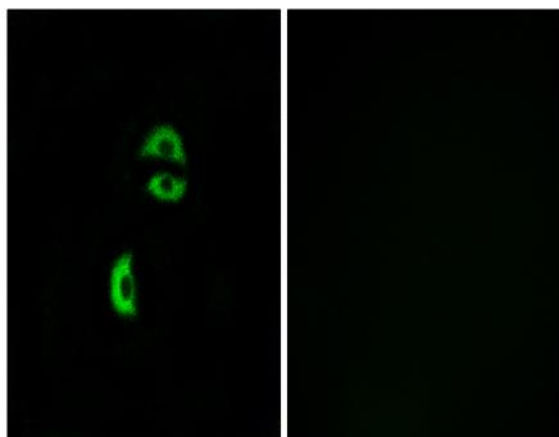


LDLRAD3 Polyclonal Antibody

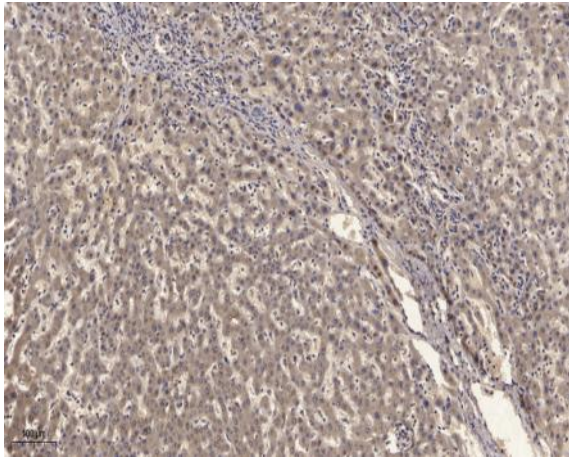
Catalog No :	YT2551
Reactivity :	Human;Mouse
Applications :	WB;IHC
Target :	LDLRAD3
Gene Name :	LDLRAD3
Protein Name :	Low-density lipoprotein receptor class A domain-containing protein 3
Human Gene Id :	143458
Human Swiss Prot No :	Q86YD5
Mouse Gene Id :	241576
Mouse Swiss Prot No :	A2AR95
Immunogen :	The antiserum was produced against synthesized peptide derived from human LDLRAD3. AA range:37-86
Specificity :	LDLRAD3 Polyclonal Antibody detects endogenous levels of LDLRAD3 protein.
Formulation :	Liquid in PBS containing 50% glycerol, 0.5% BSA and 0.02% sodium azide.
Source :	Polyclonal, Rabbit,IgG
Dilution :	WB 1:500-2000;IHC 1:50-300
Purification :	The antibody was affinity-purified from rabbit antiserum by affinity-chromatography using epitope-specific immunogen.
Concentration :	1 mg/ml
Storage Stability :	-15°C to -25°C/1 year(Do not lower than -25°C)

Observed Band :	37kD
Background :	similarity:Belongs to the LDLR family.,similarity:Contains 3 LDL-receptor class A domains.,
Function :	similarity:Belongs to the LDLR family.,similarity:Contains 3 LDL-receptor class A domains.,
Subcellular Location :	Cell membrane ; Single-pass type I membrane protein .
Expression :	Expressed at high levels in brain, lung, skeletal muscle, and pancreas. Expressed at moderate levels in heart, placenta, and kidney but not detected in the liver.
Sort :	9159
No4 :	1
Host :	Rabbit
Modifications :	Unmodified

Products Images



Immunofluorescence analysis of A549 cells, using LDLRAD3 Antibody. The picture on the right is blocked with the synthesized peptide.



Immunohistochemical analysis of paraffin-embedded human liver cancer. 1, Antibody was diluted at 1:200(4° overnight). 2, Tris-EDTA,pH9.0 was used for antigen retrieval. 3,Secondary antibody was diluted at 1:200(room temperature, 45min).