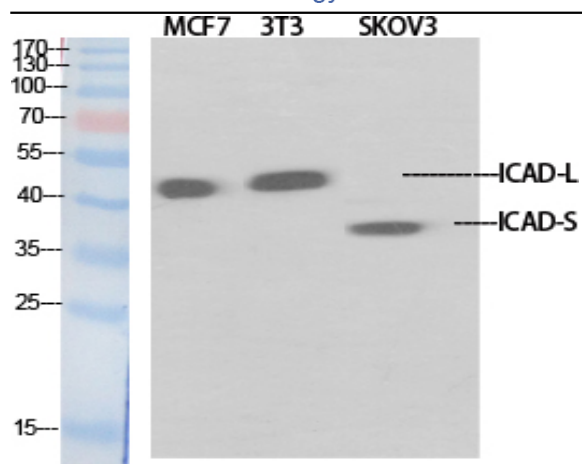


ICAD Polyclonal Antibody

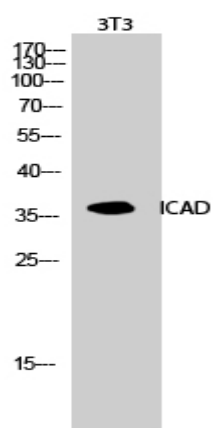
Catalog No :	YT2268
Reactivity :	Human;Mouse;Rat
Applications :	WB;IHC;IF;ELISA
Target :	ICAD
Fields :	>>Apoptosis
Gene Name :	DFFA
Protein Name :	DNA fragmentation factor subunit alpha
Human Gene Id :	1676
Human Swiss Prot No :	O00273
Mouse Gene Id :	13347
Mouse Swiss Prot No :	O54786
Immunogen :	The antiserum was produced against synthesized peptide derived from human DFFA. AA range:151-200
Specificity :	ICAD Polyclonal Antibody detects endogenous levels of ICAD protein.
Formulation :	Liquid in PBS containing 50% glycerol, 0.5% BSA and 0.02% sodium azide.
Source :	Polyclonal, Rabbit,IgG
Dilution :	WB 1:500 - 1:2000. IHC 1:100 - 1:300. IF 1:200 - 1:1000. ELISA: 1:20000. Not yet tested in other applications.
Purification :	The antibody was affinity-purified from rabbit antiserum by affinity-chromatography using epitope-specific immunogen.
Concentration :	1 mg/ml

Storage Stability :	-15°C to -25°C/1 year(Do not lower than -25°C)
Observed Band :	36kD
Cell Pathway :	Apoptosis_Inhibition;Apoptosis_Mitochondrial;Apoptosis_Overview;
Background :	Apoptosis is a cell death process that removes toxic and/or useless cells during mammalian development. The apoptotic process is accompanied by shrinkage and fragmentation of the cells and nuclei and degradation of the chromosomal DNA into nucleosomal units. DNA fragmentation factor (DFF) is a heterodimeric protein of 40-kD (DFFB) and 45-kD (DFFA) subunits. DFFA is the substrate for caspase-3 and triggers DNA fragmentation during apoptosis. DFF becomes activated when DFFA is cleaved by caspase-3. The cleaved fragments of DFFA dissociate from DFFB, the active component of DFF. DFFB has been found to trigger both DNA fragmentation and chromatin condensation during apoptosis. Two alternatively spliced transcript variants encoding distinct isoforms have been found for this gene. [provided by RefSeq, Jul 2008],
Function :	function:Inhibitor of the caspase-activated DNase (DFF40).,PTM:Caspase-3 cleaves DFF45 at 2 sites to generate an active factor.,PTM:Phosphorylated upon DNA damage, probably by ATM or ATR.,similarity:Contains 1 CIDE-N domain.,subunit:Heterodimer of DFFA and DFFB.,
Subcellular Location :	Cytoplasm.
Expression :	Breast,Coronary artery,Epithelium,Eye,Kidney,Skeletal muscle,
Tag :	hot
Sort :	8297
No4 :	1
Host :	Rabbit
Modifications :	Unmodified

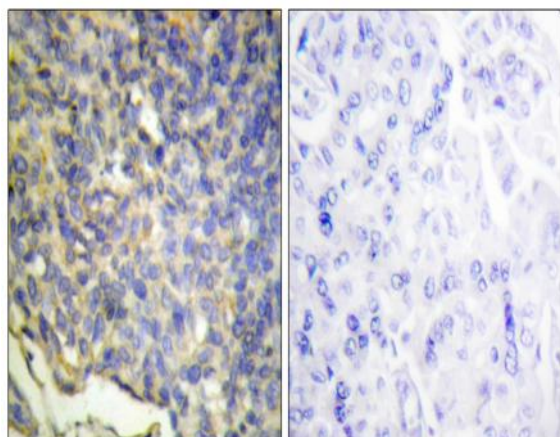
Products Images



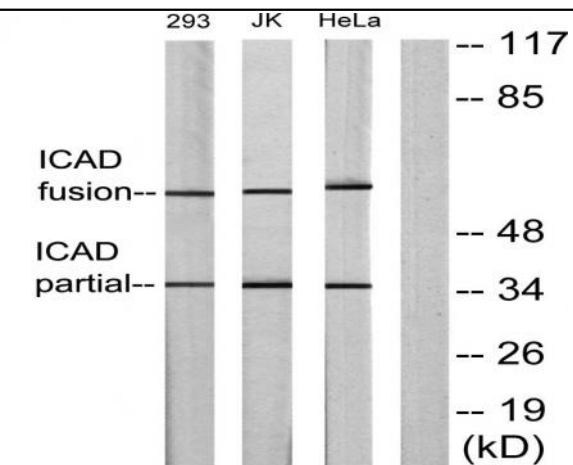
Western Blot analysis of various cells using ICAD Polyclonal Antibody diluted at 1:1000



Western Blot analysis of 3T3 cells using ICAD Polyclonal Antibody diluted at 1:1000



Immunohistochemistry analysis of paraffin-embedded human breast carcinoma tissue, using DFFA Antibody. The picture on the right is blocked with the synthesized peptide.



Western blot analysis of lysates from Jurkat, 293, and HeLa cells, using DFFA Antibody. The lane on the right is blocked with the synthesized peptide.