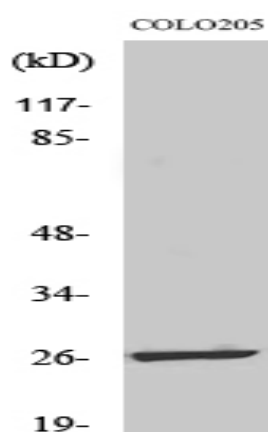


LDOC1L Polyclonal Antibody

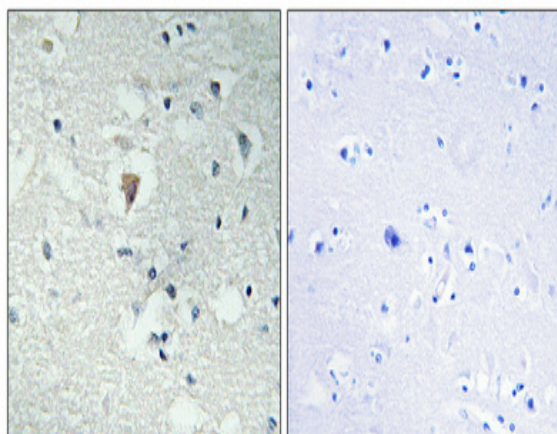
Catalog No :	YT2553
Reactivity :	Human;Mouse
Applications :	WB;IHC;IF;ELISA
Target :	LDOC1L
Gene Name :	LDOC1L
Protein Name :	Protein LDOC1L
Human Gene Id :	84247
Human Swiss Prot No :	Q6ICC9
Mouse Gene Id :	223732
Mouse Swiss Prot No :	Q505G4
Immunogen :	The antiserum was produced against synthesized peptide derived from human LDOC1L. AA range:141-190
Specificity :	LDOC1L Polyclonal Antibody detects endogenous levels of LDOC1L protein.
Formulation :	Liquid in PBS containing 50% glycerol, 0.5% BSA and 0.02% sodium azide.
Source :	Polyclonal, Rabbit,IgG
Dilution :	WB 1:500 - 1:2000. IHC 1:100 - 1:300. ELISA: 1:20000.. IF 1:50-200
Purification :	The antibody was affinity-purified from rabbit antiserum by affinity-chromatography using epitope-specific immunogen.
Concentration :	1 mg/ml
Storage Stability :	-15°C to -25°C/1 year(Do not lower than -25°C)

Observed Band :	24kD
Background :	similarity:Belongs to the LDOC1 family.,
Function :	similarity:Belongs to the LDOC1 family.,
Expression :	Amygdala,Brain,Trachea,
Sort :	9161
No4 :	1
Host :	Rabbit
Modifications :	Unmodified

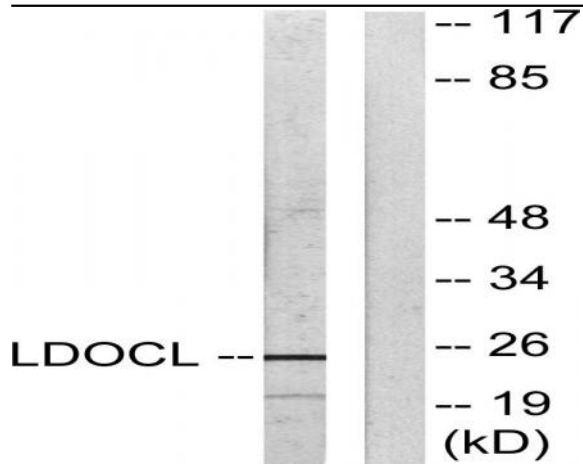
Products Images



Western Blot analysis of various cells using LDOC1L Polyclonal Antibody



Immunohistochemical analysis of paraffin-embedded Human brain. Antibody was diluted at 1:100(4° overnight). High-pressure and temperature Tris-EDTA,pH8.0 was used for antigen retrieval. Negative contrl (right) obtaned from antibody was pre-absorbed by immunogen peptide.



Western blot analysis of lysates from COLO205 cells, using LDOC1L Antibody. The lane on the right is blocked with the synthesized peptide.