

LDOC1 Polyclonal Antibody

Catalog No :	YT2552
Reactivity :	Human;Mouse
Applications :	IHC;IF;ELISA
Target :	LDOC1
Gene Name :	LDOC1
Protein Name :	Protein LDOC1
Human Gene Id :	23641
Human Swiss Prot No :	O95751
Mouse Gene Id :	434784
Mouse Swiss Prot No :	Q7TPY9
Immunogen :	The antiserum was produced against synthesized peptide derived from human LDOC1. AA range:21-70
Specificity :	LDOC1 Polyclonal Antibody detects endogenous levels of LDOC1 protein.
Formulation :	Liquid in PBS containing 50% glycerol, 0.5% BSA and 0.02% sodium azide.
Source :	Polyclonal, Rabbit,IgG
Dilution :	IHC 1:100 - 1:300. ELISA: 1:5000.. IF 1:50-200
Purification :	The antibody was affinity-purified from rabbit antiserum by affinity-chromatography using epitope-specific immunogen.
Concentration :	1 mg/ml
Storage Stability :	-15°C to -25°C/1 year(Do not lower than -25°C)

Molecularweight : 17kD

Background : The protein encoded by this gene contains a leucine zipper-like motif and a proline-rich region that shares marked similarity with an SH3-binding domain. The protein localizes to the nucleus and is down-regulated in some cancer cell lines. It is thought to regulate the transcriptional response mediated by the nuclear factor kappa B (NF-kappaB). The gene has been proposed as a tumor suppressor gene whose protein product may have an important role in the development and/or progression of some cancers. [provided by RefSeq, Jul 2008],

Function : function:May have an important role in the development and/or progression of some cancers.,similarity:Belongs to the LDOC1 family.,tissue specificity:Ubiquitously expressed with high levels in brain ant thyroid and low expression in placenta, liver and leukocytes. Expressed as well in six of the seven human breast cancer cell lines examined.,

Subcellular Location : Nucleus .

Expression : Ubiquitously expressed with high levels in brain ant thyroid and low expression in placenta, liver and leukocytes. Expressed as well in six of the seven human breast cancer cell lines examined.

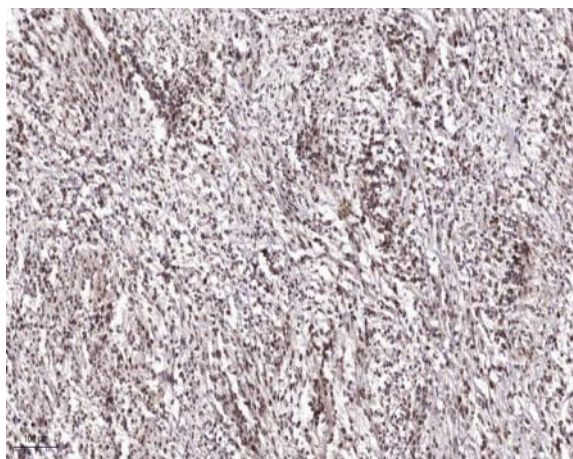
Sort : 9160

No4 : 1

Host : Rabbit

Modifications : Unmodified

Products Images



Immunohistochemical analysis of paraffin-embedded human Colon cancer. 1, Antibody was diluted at 1:200(4° overnight). 2, Tris-EDTA,pH9.0 was used for antigen retrieval. 3,Secondary antibody was diluted at 1:200(room temperature, 45min).