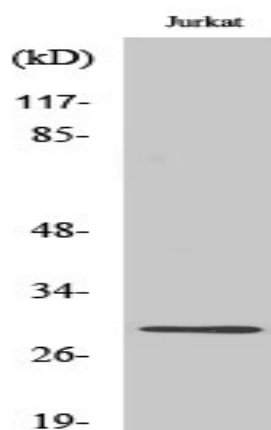


**LDLRAD2 Polyclonal Antibody**

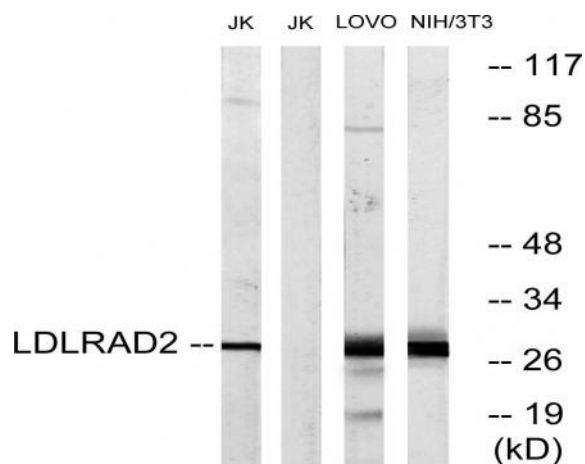
<b>Catalog No :</b>	YT2550
<b>Reactivity :</b>	Human;Rat;Mouse;
<b>Applications :</b>	WB;ELISA;IHC
<b>Target :</b>	LDLRAD2
<b>Gene Name :</b>	LDLRAD2
<b>Protein Name :</b>	Low-density lipoprotein receptor class A domain-containing protein 2
<b>Human Gene Id :</b>	401944
<b>Human Swiss Prot No :</b>	Q5SZI1
<b>Immunogen :</b>	The antiserum was produced against synthesized peptide derived from human LDLRAD2. AA range:130-179
<b>Specificity :</b>	LDLRAD2 Polyclonal Antibody detects endogenous levels of LDLRAD2 protein.
<b>Formulation :</b>	Liquid in PBS containing 50% glycerol, 0.5% BSA and 0.02% sodium azide.
<b>Source :</b>	Polyclonal, Rabbit,IgG
<b>Dilution :</b>	WB 1:500-2000;IHC 1:50-300; ELISA 2000-20000
<b>Purification :</b>	The antibody was affinity-purified from rabbit antiserum by affinity-chromatography using epitope-specific immunogen.
<b>Concentration :</b>	1 mg/ml
<b>Storage Stability :</b>	-15°C to -25°C/1 year(Do not lower than -25°C)
<b>Observed Band :</b>	29kD
<b>Background :</b>	similarity:Belongs to the LDLR family.,similarity:Contains 1 LDL-receptor class A domain.,

<b>Function :</b>	similarity:Belongs to the LDLR family.,similarity:Contains 1 LDL-receptor class A domain.,
<b>Subcellular Location :</b>	Membrane; Single-pass type I membrane protein.
<b>Expression :</b>	Hippocampus,
<b>Sort :</b>	9158
<b>No4 :</b>	1
<b>Host :</b>	Rabbit
<b>Modifications :</b>	Unmodified

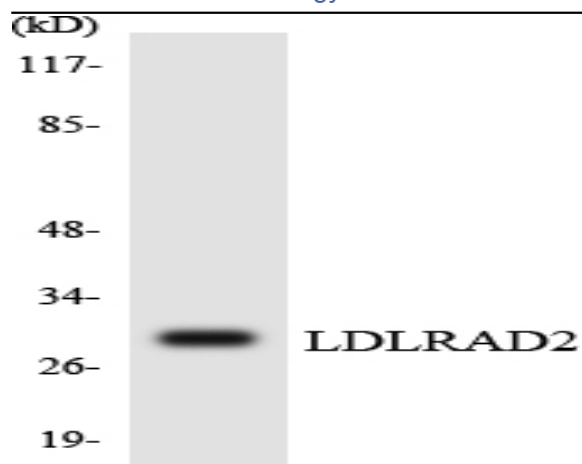
## Products Images



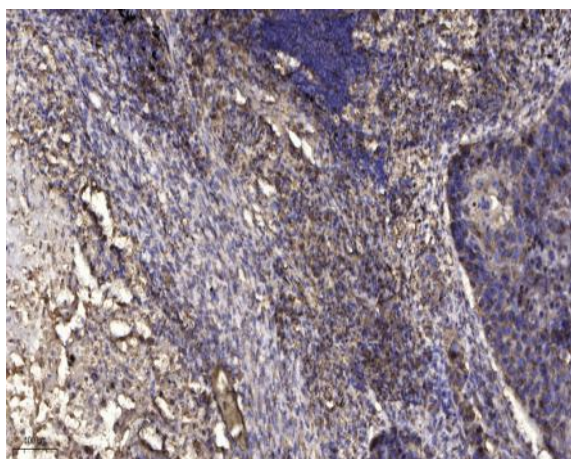
Western blot analysis of various cells using LDLRAD2 Polyclonal Antibody diluted at 1:500



Western blot analysis of lysates from Jurkat, LOVO, and NIH/3T3 cells, using LDLRAD2 Antibody. The lane on the right is blocked with the synthesized peptide.



Western blot analysis of the lysates from HepG2 cells using LDLRAD2 antibody.



Immunohistochemical analysis of paraffin-embedded human Squamous cell carcinoma of lung. 1, Antibody was diluted at 1:200(4° overnight). 2, Tris-EDTA,pH9.0 was used for antigen retrieval. 3,Secondary antibody was diluted at 1:200(room temperature, 45min).