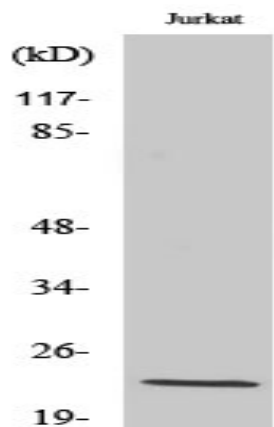


LDLRAD1 Polyclonal Antibody

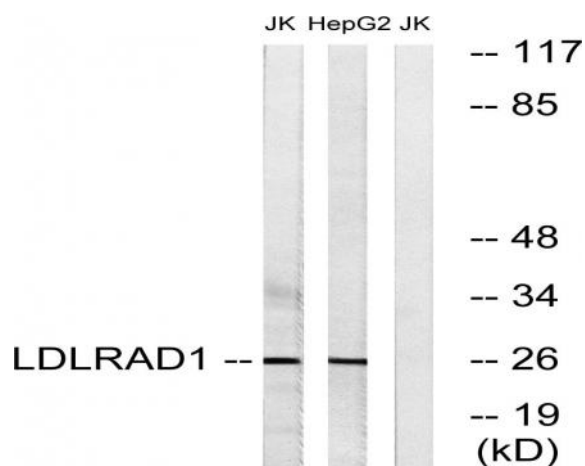
Catalog No :	YT2549
Reactivity :	Human;Rat;Mouse;
Applications :	WB;ELISA;IHC
Target :	LDLRAD1
Gene Name :	LDLRAD1
Protein Name :	Low-density lipoprotein receptor class A domain-containing protein 1
Human Gene Id :	388633
Human Swiss Prot No :	Q5T700
Immunogen :	The antiserum was produced against synthesized peptide derived from human LDLRAD1. AA range:84-133
Specificity :	LDLRAD1 Polyclonal Antibody detects endogenous levels of LDLRAD1 protein.
Formulation :	Liquid in PBS containing 50% glycerol, 0.5% BSA and 0.02% sodium azide.
Source :	Polyclonal, Rabbit,IgG
Dilution :	WB 1:500-2000;IHC 1:50-300; ELISA 2000-20000
Purification :	The antibody was affinity-purified from rabbit antiserum by affinity-chromatography using epitope-specific immunogen.
Concentration :	1 mg/ml
Storage Stability :	-15°C to -25°C/1 year(Do not lower than -25°C)
Observed Band :	26kD
Background :	similarity:Belongs to the LDLR family.,similarity:Contains 3 LDL-receptor class A domains.,

Function :	similarity:Belongs to the LDLR family.,similarity:Contains 3 LDL-receptor class A domains.,
Subcellular Location :	Membrane ; Single-pass membrane protein .
Sort :	9157
No4 :	1
Host :	Rabbit
Modifications :	Unmodified

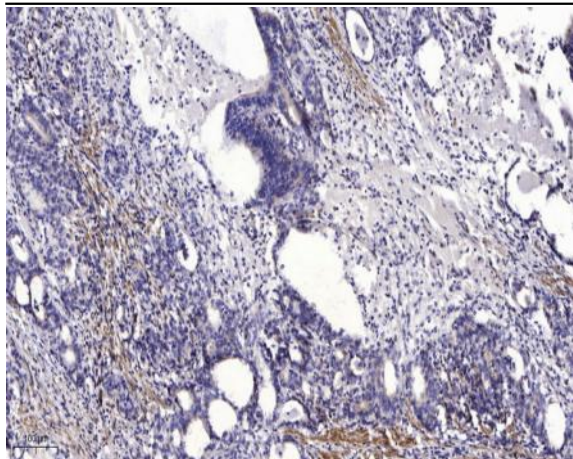
Products Images



Western Blot analysis of various cells using LDLRAD1 Polyclonal Antibody



Western blot analysis of lysates from Jurkat and HepG2 cells, using LDLRAD1 Antibody. The lane on the right is blocked with the synthesized peptide.



Immunohistochemical analysis of paraffin-embedded human Gastric adenocarcinoma. 1, Antibody was diluted at 1:200(4° overnight). 2, Tris-EDTA,pH9.0 was used for antigen retrieval. 3,Secondary antibody was diluted at 1:200(room temperature, 45min).