

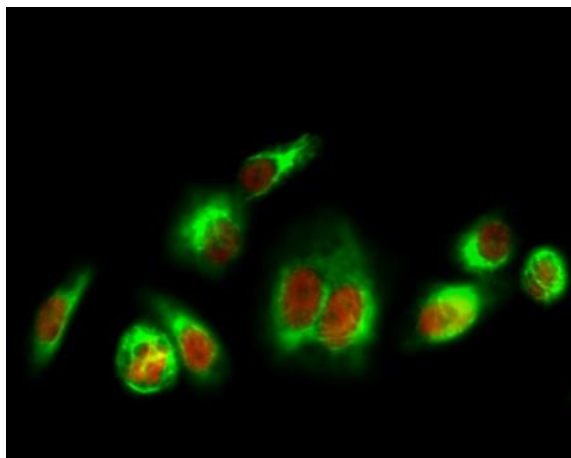
## HSP90A Polyclonal Antibody

<b>Catalog No :</b>	YT2257
<b>Reactivity :</b>	Human;Mouse;Rat
<b>Applications :</b>	WB;IHC;IF;ELISA
<b>Target :</b>	HSP 90
<b>Fields :</b>	>>Protein processing in endoplasmic reticulum;>>PI3K-Akt signaling pathway;>>Necroptosis;>>Antigen processing and presentation;>>NOD-like receptor signaling pathway;>>IL-17 signaling pathway;>>Th17 cell differentiation;>>Progesterone-mediated oocyte maturation;>>Estrogen signaling pathway;>>Salmonella infection;>>Pathways in cancer;>>Chemical carcinogenesis - receptor activation;>>Prostate cancer;>>Lipid and atherosclerosis;>>Fluid shear stress and atherosclerosis
<b>Gene Name :</b>	HSP90AA1
<b>Protein Name :</b>	Heat shock protein HSP 90-alpha
<b>Human Gene Id :</b>	3320
<b>Human Swiss Prot No :</b>	P07900
<b>Mouse Gene Id :</b>	15519
<b>Mouse Swiss Prot No :</b>	P07901
<b>Rat Gene Id :</b>	299331
<b>Rat Swiss Prot No :</b>	P82995
<b>Immunogen :</b>	The antiserum was produced against synthesized peptide derived from human HSP90A. AA range:683-732
<b>Specificity :</b>	HSP90A Polyclonal Antibody detects endogenous levels of HSP90A protein.
<b>Formulation :</b>	Liquid in PBS containing 50% glycerol, 0.5% BSA and 0.02% sodium azide.

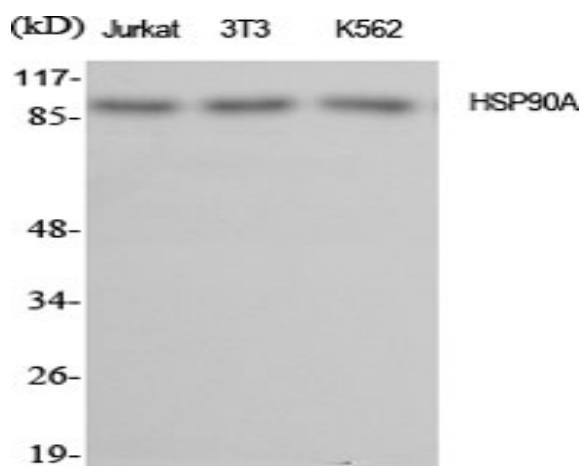
<b>Source :</b>	Polyclonal, Rabbit,IgG
<b>Dilution :</b>	WB 1:500 - 1:2000. IHC 1:100 - 1:300. IF 1:200 - 1:1000. ELISA: 1:40000. Not yet tested in other applications.
<b>Purification :</b>	The antibody was affinity-purified from rabbit antiserum by affinity-chromatography using epitope-specific immunogen.
<b>Concentration :</b>	1 mg/ml
<b>Storage Stability :</b>	-15°C to -25°C/1 year(Do not lower than -25°C)
<b>Observed Band :</b>	85kD
<b>Cell Pathway :</b>	PI3K/Akt; Protein_Acetylation
<b>Background :</b>	The protein encoded by this gene is an inducible molecular chaperone that functions as a homodimer. The encoded protein aids in the proper folding of specific target proteins by use of an ATPase activity that is modulated by co-chaperones. Two transcript variants encoding different isoforms have been found for this gene. [provided by RefSeq, Jan 2012],
<b>Function :</b>	caution:Despite classification as a pseudogene, the existence of this protein is supported by unambiguous mass spectrometry evidence.,function:Molecular chaperone.,function:Molecular chaperone. Has ATPase activity.,similarity:Belongs to the heat shock protein 90 family.,subcellular location:Identified by mass spectrometry in melanosome fractions from stage I to stage IV.,subunit:Homodimer. Interacts with AHSA1, SMYD3 and TOM34. Interacts with FNIP1 and HSF1.,
<b>Subcellular Location :</b>	Nucleus . Cytoplasm . Melanosome . Cell membrane . Mitochondrion . Identified by mass spectrometry in melanosome fractions from stage I to stage IV.
<b>Expression :</b>	Adult brain,Brain,Brain cortex,Breast,Cajal-Retzius
<b>Tag :</b>	orthogonal,hot
<b>Sort :</b>	1
<b>No4 :</b>	1
<b>Host :</b>	Rabbit
<b>Modifications :</b>	Unmodified

---

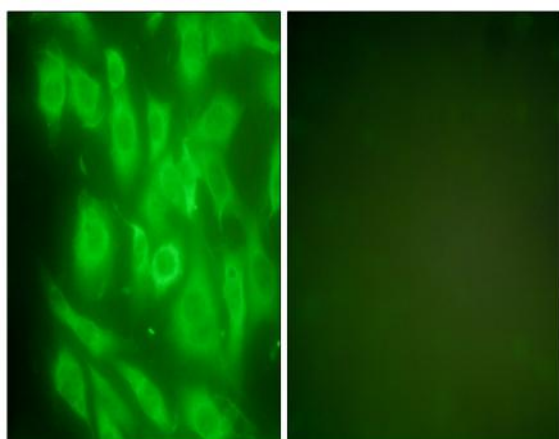
## Products Images



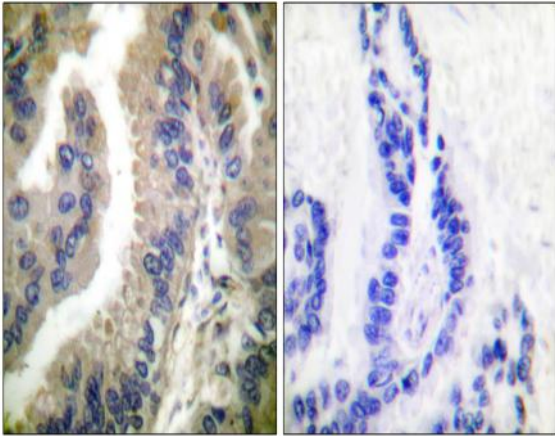
Immunofluorescence analysis of HeLa cell. 1, HSP90A Polyclonal Antibody (red) was diluted at 1:200 (4° overnight). Active Caspase-3 Monoclonal Antibody (5E1) (green) was diluted at 1:200 (4° overnight). 2, Goat Anti Rabbit Alexa Fluor 594 Catalog: RS3611 was diluted at 1:1000 (room temperature, 50min). Goat Anti Mouse Alexa Fluor 488 Catalog: RS3208 was diluted at 1:1000 (room temperature, 50min).



Western Blot analysis of various cells using HSP90A Polyclonal Antibody diluted at 1:2000



Immunofluorescence analysis of NIH/3T3 cells, using HSP90A Antibody. The picture on the right is blocked with the synthesized peptide.



Immunohistochemistry analysis of paraffin-embedded human lung carcinoma tissue, using HSP90A Antibody. The picture on the right is blocked with the synthesized peptide.