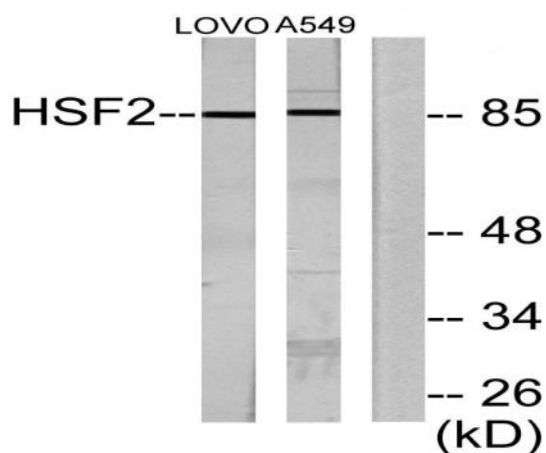


## HSF2 Polyclonal Antibody

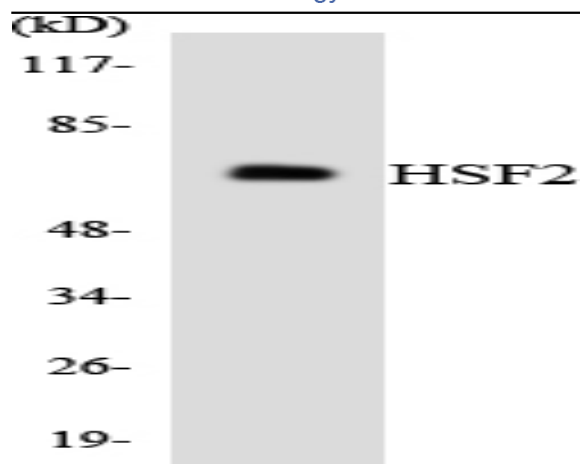
<b>Catalog No :</b>	YT2237
<b>Reactivity :</b>	Human;Mouse;Rat
<b>Applications :</b>	WB;IHC;IF;ELISA
<b>Target :</b>	HSF2
<b>Gene Name :</b>	HSF2
<b>Protein Name :</b>	Heat shock factor protein 2
<b>Human Gene Id :</b>	3298
<b>Human Swiss Prot No :</b>	Q03933
<b>Mouse Gene Id :</b>	15500
<b>Mouse Swiss Prot No :</b>	P38533
<b>Immunogen :</b>	The antiserum was produced against synthesized peptide derived from human HSF2. AA range:401-450
<b>Specificity :</b>	HSF2 Polyclonal Antibody detects endogenous levels of HSF2 protein.
<b>Formulation :</b>	Liquid in PBS containing 50% glycerol, 0.5% BSA and 0.02% sodium azide.
<b>Source :</b>	Polyclonal, Rabbit,IgG
<b>Dilution :</b>	WB 1:500 - 1:2000. IHC 1:100 - 1:300. ELISA: 1:20000.. IF 1:50-200
<b>Purification :</b>	The antibody was affinity-purified from rabbit antiserum by affinity-chromatography using epitope-specific immunogen.
<b>Concentration :</b>	1 mg/ml
<b>Storage Stability :</b>	-15°C to -25°C/1 year(Do not lower than -25°C)

**Observed Band :** 85kD**Background :** heat shock transcription factor 2(HSF2) Homo sapiens The protein encoded by this gene belongs to the HSF family of transcription factors that bind specifically to the heat-shock promoter element and activate transcription. Heat shock transcription factors activate heat-shock response genes under conditions of heat or other stresses. Alternatively spliced transcript variants encoding different isoforms have been found for this gene. [provided by RefSeq, Jul 2011],**Function :** function:DNA-binding protein that specifically binds heat shock promoter elements (HSE) and activates transcription. In higher eukaryotes, HSF is unable to bind to the HSE unless the cells are heat shocked.,similarity:Belongs to the HSF family.,subcellular location:Cytoplasmic during normal growth and moves to the nucleus upon activation.,subunit:DNA-binding homotrimer in stressed or heat shocked cells, otherwise found as a homodimer.,**Subcellular Location :** Cytoplasm . Nucleus . Cytoplasmic during normal growth and moves to the nucleus upon activation.**Expression :** Bladder,Brain,PCR rescued clones,Testis,**Sort :** 7868**No4 :** 1**Host :** Rabbit**Modifications :** Unmodified

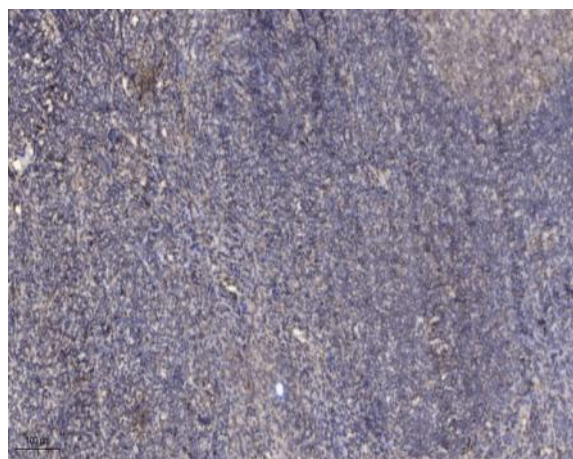
## Products Images



Western blot analysis of lysates from LOVO and A549 cells, using HSF2 Antibody. The lane on the right is blocked with the synthesized peptide.



Western blot analysis of the lysates from HeLa cells using HSF2 antibody.



Immunohistochemical analysis of paraffin-embedded human tonsil. 1, Antibody was diluted at 1:200(4° overnight). 2, Tris-EDTA,pH9.0 was used for antigen retrieval. 3,Secondary antibody was diluted at 1:200(room temperature, 45min).