

KV β .3 Polyclonal Antibody

Catalog No :	YT2517
Reactivity :	Human;Mouse;Rat
Applications :	WB;IHC;IF;ELISA
Target :	KV β .3
Gene Name :	KCNAB3
Protein Name :	Voltage-gated potassium channel subunit beta-3
Human Gene Id :	9196
Human Swiss Prot No :	O43448
Mouse Swiss Prot No :	P97382
Rat Gene Id :	58981
Rat Swiss Prot No :	Q63494
Immunogen :	The antiserum was produced against synthesized peptide derived from human KCNAB3. AA range:293-342
Specificity :	KV β .3 Polyclonal Antibody detects endogenous levels of KV β .3 protein.
Formulation :	Liquid in PBS containing 50% glycerol, 0.5% BSA and 0.02% sodium azide.
Source :	Polyclonal, Rabbit,IgG
Dilution :	WB 1:500 - 1:2000. IHC 1:100 - 1:300. ELISA: 1:10000.. IF 1:50-200
Purification :	The antibody was affinity-purified from rabbit antiserum by affinity-chromatography using epitope-specific immunogen.
Concentration :	1 mg/ml

Storage Stability : -15°C to -25°C/1 year(Do not lower than -25°C)

Observed Band : 45kD

Background : This gene encodes a member of the potassium channel, voltage-gated, shaker-related subfamily. The encoded protein is one of the beta subunits, which are auxiliary proteins associating with functional Kv-alpha subunits. The encoded protein forms a heterodimer with the potassium voltage-gated channel, shaker-related subfamily, member 5 gene product and regulates the activity of the alpha subunit. [provided by RefSeq, May 2012],

Function : domain:Alteration of functional properties of alpha subunit is mediated through N-terminal domain of beta subunit.,function:Accessory potassium channel protein which modulates the activity of the pore-forming alpha subunit. Alters the functional properties of Kv1.5.,similarity:Belongs to the shaker potassium channel beta subunit family.,subunit:Forms heteromultimeric complex with alpha subunits.,tissue specificity:Brain specific. Most prominent expression in cerebellum. Weaker signals detected in cortex, occipital lobe, frontal lobe and temporal lobe. Not detected in spinal cord, heart, lung, liver, kidney, pancreas, placenta and skeletal muscle.,

Subcellular Location : Cytoplasm .

Expression : Brain specific. Most prominent expression in cerebellum. Weaker signals detected in cortex, occipital lobe, frontal lobe and temporal lobe. Not detected in spinal cord, heart, lung, liver, kidney, pancreas, placenta and skeletal muscle.

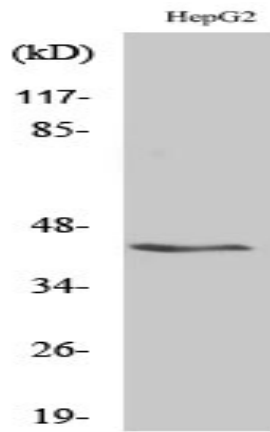
Sort : 9072

No4 : 1

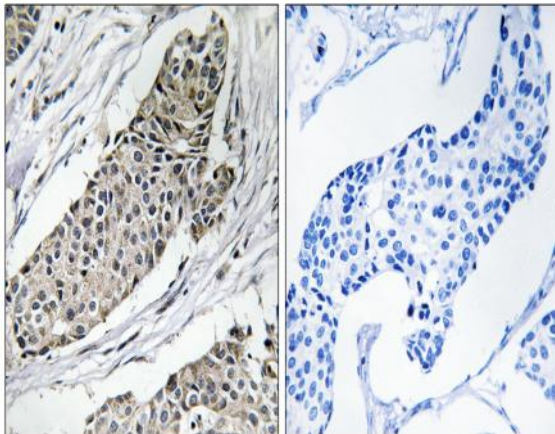
Host : Rabbit

Modifications : Unmodified

Products Images



Western Blot analysis of various cells using KV β .3 Polyclonal Antibody



Immunohistochemistry analysis of paraffin-embedded human breast carcinoma tissue, using KCNAB3 Antibody. The picture on the right is blocked with the synthesized peptide.