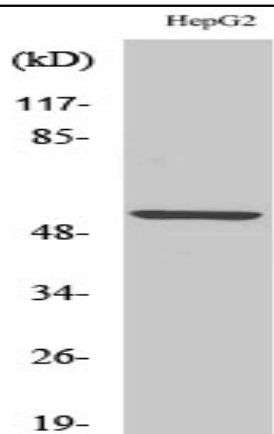


KV9.2 Polyclonal Antibody

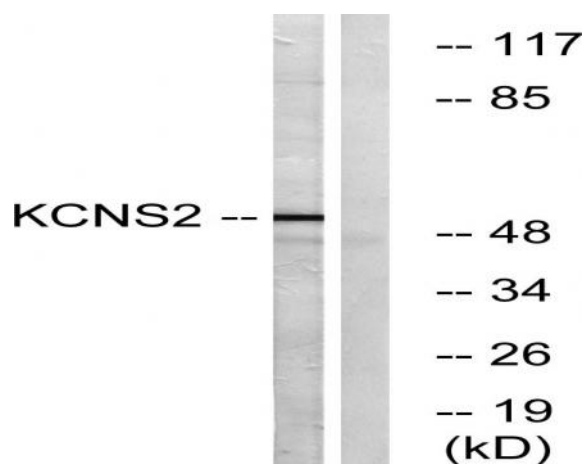
Catalog No :	YT2516
Reactivity :	Human;Mouse;Rat
Applications :	WB;IHC
Target :	KV9.2
Gene Name :	KCNS2
Protein Name :	Potassium voltage-gated channel subfamily S member 2
Human Gene Id :	3788
Human Swiss Prot No :	Q9ULS6
Mouse Gene Id :	16539
Mouse Swiss Prot No :	O35174
Rat Gene Id :	66022
Rat Swiss Prot No :	Q9ER26
Immunogen :	The antiserum was produced against synthesized peptide derived from human KCNS2. AA range:197-246
Specificity :	KV9.2 Polyclonal Antibody detects endogenous levels of KV9.2 protein.
Formulation :	Liquid in PBS containing 50% glycerol, 0.5% BSA and 0.02% sodium azide.
Source :	Polyclonal, Rabbit,IgG
Dilution :	WB 1:500-2000;IHC 1:50-300
Purification :	The antibody was affinity-purified from rabbit antiserum by affinity-chromatography using epitope-specific immunogen.

Concentration :	1 mg/ml
Storage Stability :	-15°C to -25°C/1 year(Do not lower than -25°C)
Observed Band :	54kD
Background :	domain:The segment S4 is probably the voltage-sensor and is characterized by a series of positively charged amino acids at every third position.,function:Potassium channel subunit. Modulates channel activity and reduces the ion flow.,similarity:Belongs to the potassium channel family. S subfamily.,subcellular location:May not reach the plasma membrane but remain in an intracellular compartment in the absence of KCNB1.,subunit:Heteromultimer with KCNB1 and with KCNB2. Does not form homomultimers. Might also bind to other channel proteins.,
Function :	domain:The segment S4 is probably the voltage-sensor and is characterized by a series of positively charged amino acids at every third position.,function:Potassium channel subunit. Modulates channel activity and reduces the ion flow.,similarity:Belongs to the potassium channel family. S subfamily.,subcellular location:May not reach the plasma membrane but remain in an intracellular compartment in the absence of KCNB1.,subunit:Heteromultimer with KCNB1 and with KCNB2. Does not form homomultimers. Might also bind to other channel proteins.,
Subcellular Location :	Cell membrane ; Multi-pass membrane protein . May not reach the plasma membrane but remain in an intracellular compartment in the absence of KCNB1 or KCNB2. .
Expression :	Brain,
Sort :	9071
No4 :	1
Host :	Rabbit
Modifications :	Unmodified

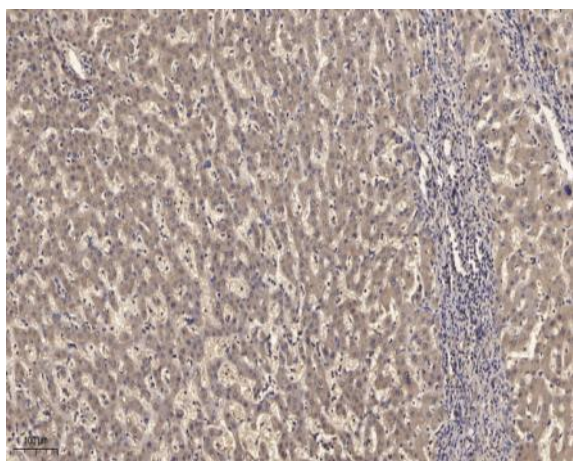
Products Images



Western Blot analysis of various cells using KV9.2 Polyclonal Antibody



Western blot analysis of lysates from HepG2 cells, using KCNS2 Antibody. The lane on the right is blocked with the synthesized peptide.



Immunohistochemical analysis of paraffin-embedded human liver cancer. 1, Antibody was diluted at 1:200(4° overnight). 2, Tris-EDTA,pH9.0 was used for antigen retrieval. 3,Secondary antibody was diluted at 1:200(room temperature, 45min).