

## Hox-B9 Polyclonal Antibody

<b>Catalog No :</b>	YT2217
<b>Reactivity :</b>	Human;Mouse
<b>Applications :</b>	WB;IHC;IF;ELISA
<b>Target :</b>	Hox-B9
<b>Gene Name :</b>	HOXB9
<b>Protein Name :</b>	Homeobox protein Hox-B9
<b>Human Gene Id :</b>	3219
<b>Human Swiss Prot No :</b>	P17482
<b>Mouse Gene Id :</b>	15417
<b>Mouse Swiss Prot No :</b>	P20615
<b>Immunogen :</b>	The antiserum was produced against synthesized peptide derived from human HOXB9. AA range:201-250
<b>Specificity :</b>	Hox-B9 Polyclonal Antibody detects endogenous levels of Hox-B9 protein.
<b>Formulation :</b>	Liquid in PBS containing 50% glycerol, 0.5% BSA and 0.02% sodium azide.
<b>Source :</b>	Polyclonal, Rabbit,IgG
<b>Dilution :</b>	WB 1:500 - 1:2000. IHC 1:100 - 1:300. ELISA: 1:10000.. IF 1:50-200
<b>Purification :</b>	The antibody was affinity-purified from rabbit antiserum by affinity-chromatography using epitope-specific immunogen.
<b>Concentration :</b>	1 mg/ml
<b>Storage Stability :</b>	-15°C to -25°C/1 year(Do not lower than -25°C)

**Observed Band :** 28kD

**Background :** This gene is a member of the Abd-B homeobox family and encodes a protein with a homeobox DNA-binding domain. It is included in a cluster of homeobox B genes located on chromosome 17. The encoded nuclear protein functions as a sequence-specific transcription factor that is involved in cell proliferation and differentiation. Increased expression of this gene is associated with some cases of leukemia, prostate cancer and lung cancer. [provided by RefSeq, Jul 2008],

**Function :** developmental stage:Expressed in whole embryos and fetuses at 5-9 weeks from conception.,function:Sequence-specific transcription factor which is part of a developmental regulatory system that provides cells with specific positional identities on the anterior-posterior axis.,similarity:Belongs to the Abd-B homeobox family.,similarity:Contains 1 homeobox DNA-binding domain.,

**Subcellular Location :** Nucleus.

**Expression :** Muscle,Placenta,

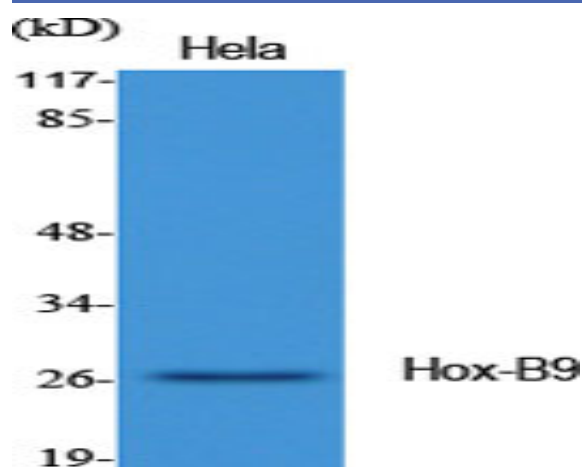
**Sort :** 7748

**No4 :** 1

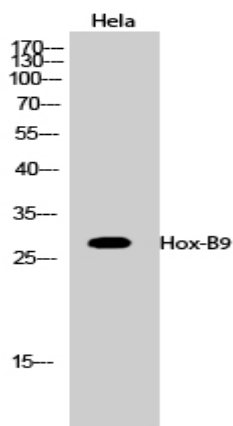
**Host :** Rabbit

**Modifications :** Unmodified

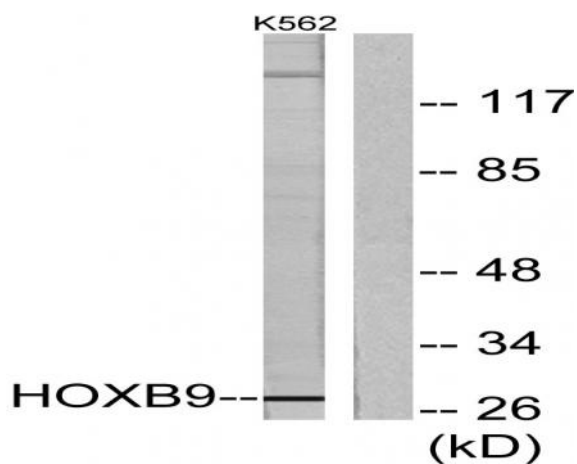
## Products Images



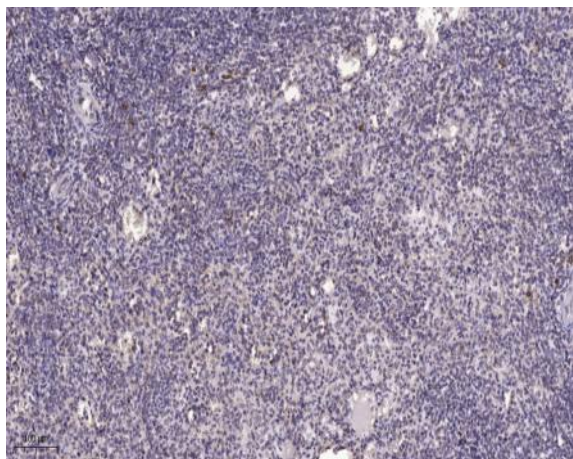
Western Blot analysis of various cells using Hox-B9 Polyclonal Antibody diluted at 1:1000 cells nucleus extracted by Minute TM Cytoplasmic and Nuclear Fractionation kit (SC-003, Inventbiotech, MN, USA).



Western Blot analysis of HeLa cells using Hox-B9 Polyclonal Antibody diluted at 1:1000 cells nucleus extracted by Minute TM Cytoplasmic and Nuclear Fractionation kit (SC-003, Inventbiotech, MN, USA).



Western blot analysis of lysates from K562 cells, using HOXB9 Antibody. The lane on the right is blocked with the synthesized peptide.



Immunohistochemical analysis of paraffin-embedded human spleen. 1, Tris-EDTA, pH9.0 was used for antigen retrieval. 2 Antibody was diluted at 1:200(4° overnight).3, Secondary antibody was diluted at 1:200(room temperature, 45min).