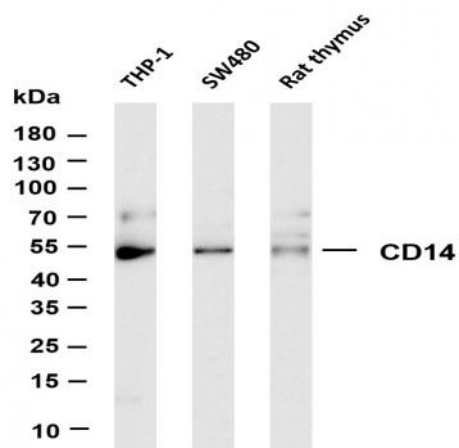


CD14 (PT0403R) PT® Rabbit mAb

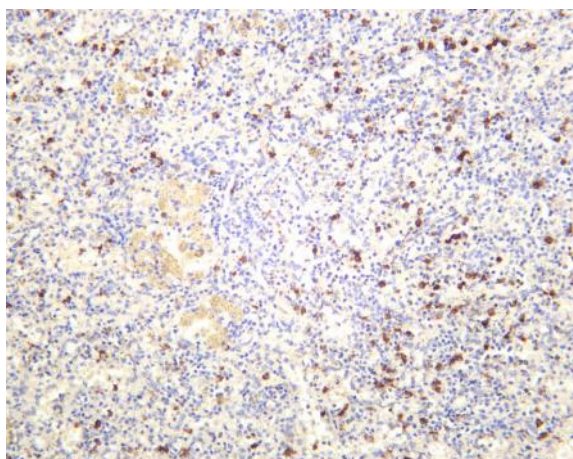
Catalog No :	YM8248
Reactivity :	Human; Mouse; Rat;
Applications :	WB;IHC;IF;IP;ELISA
Target :	CD14
Fields :	>>MAPK signaling pathway;>>NF-kappa B signaling pathway;>>Phagosome;>>Toll-like receptor signaling pathway;>>Hematopoietic cell lineage;>>Alcoholic liver disease;>>Shigellosis;>>Salmonella infection;>>Pertussis;>>Legionellosis;>>Amoebiasis;>>Tuberculosis;>>Transcriptional misregulation in cancer;>>Acute myeloid leukemia;>>Lipid and atherosclerosis
Gene Name :	CD14
Protein Name :	CD14
Human Gene Id :	929
Human Swiss Prot No :	P08571
Mouse Gene Id :	12475
Mouse Swiss Prot No :	P10810
Rat Gene Id :	60350
Rat Swiss Prot No :	Q63691
Specificity :	endogenous
Formulation :	PBS, 50% glycerol, 0.05% Proclin 300, 0.05%BSA
Source :	Monoclonal, rabbit, IgG, Kappa
Dilution :	IHC 1:2000-1:5000;WB 1:1000-1:5000;IF 1:200-1:1000;ELISA 1:5000-1:20000;IP 1:50-1:200;

Purification :	Protein A
Storage Stability :	-15°C to -25°C/1 year(Do not lower than -25°C)
Molecularweight :	40kD
Observed Band :	50kD
Background :	<p>The protein encoded by this gene is a surface antigen that is preferentially expressed on monocytes/macrophages. It cooperates with other proteins to mediate the innate immune response to bacterial lipopolysaccharide. Alternative splicing results in multiple transcript variants encoding the same protein. [provided by RefSeq, Mar 2010],</p>
Function :	<p>function:Cooperates with MD-2 and TLR4 to mediate the innate immune response to bacterial lipopolysaccharide (LPS). Acts via MyD88, TIRAP and TRAF6, leading to NF-kappa-B activation, cytokine secretion and the inflammatory response. Up-regulates cell surface molecules, including adhesion molecules.,online information:CD14 entry,similarity:Contains 11 LRR (leucine-rich) repeats.,subunit:Belongs to the lipopolysaccharide (LPS) receptor, a multi-protein complex containing at least CD14, MD-2 and TLR4.,tissue specificity:Expressed strongly on the surface of monocytes and weakly on the surface of granulocytes; also expressed by most tissue macrophages.,</p>
Subcellular Location :	Membrane
Expression :	Detected on macrophages (at protein level) (PubMed:1698311). Expressed strongly on the surface of monocytes and weakly on the surface of granulocytes; also expressed by most tissue macrophages.
Tag :	hot,recombinant
Sort :	3388
No4 :	1
Host :	Rabbit
Modifications :	Unmodified

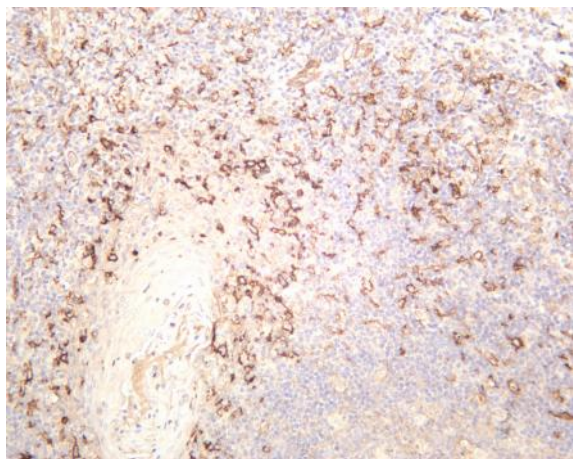
Products Images



Various whole cell lysates were separated by 4-20% SDS-PAGE, and the membrane was blotted with anti-CD14 (PT0403R) antibody. The HRP-conjugated Goat anti-Rabbit IgG(H + L) antibody was used to detect the antibody. Lane 1: THP-1 Lane 2: SW480 Lane 3: Rat thymus Predicted band size: 40kDa Observed band size: 50kDa



Human spleen was stained with anti-CD14 (PT0403R) rabbit antibody



Human tonsil was stained with anti-CD14 (PT0403R) rabbit antibody