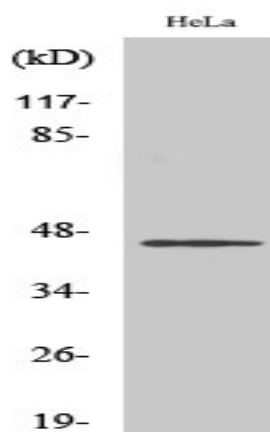


HORMAD1 Polyclonal Antibody

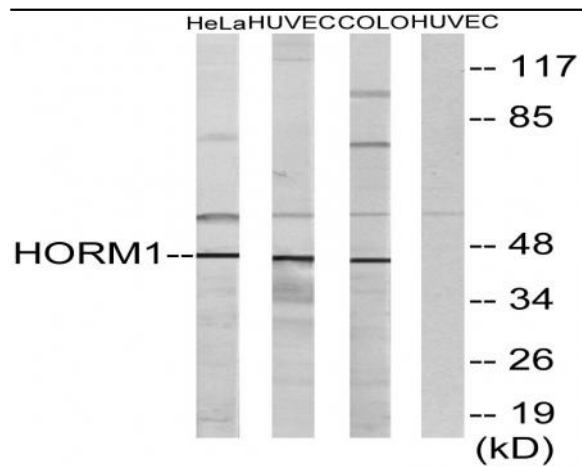
Catalog No :	YT2207
Reactivity :	Human;Rat;Mouse;
Applications :	WB;ELISA
Target :	HORMAD1
Gene Name :	HORMAD1
Protein Name :	HORMA domain-containing protein 1
Human Gene Id :	84072
Human Swiss Prot No :	Q86X24
Mouse Swiss Prot No :	Q9D5T7
Immunogen :	The antiserum was produced against synthesized peptide derived from human HORMAD1. AA range:321-370
Specificity :	HORMAD1 Polyclonal Antibody detects endogenous levels of HORMAD1 protein.
Formulation :	Liquid in PBS containing 50% glycerol, 0.5% BSA and 0.02% sodium azide.
Source :	Polyclonal, Rabbit,IgG
Dilution :	WB 1:500 - 1:2000. ELISA: 1:10000. Not yet tested in other applications.
Purification :	The antibody was affinity-purified from rabbit antiserum by affinity-chromatography using epitope-specific immunogen.
Concentration :	1 mg/ml
Storage Stability :	-15°C to -25°C/1 year(Do not lower than -25°C)
Observed Band :	45kD

Background :	This gene encodes a HORMA domain-containing protein. HORMA domains are involved in chromatin binding and play a role in cell cycle regulation. The encoded protein may play a role in meiosis, and expression of this gene is a potential marker for cancer. A pseudogene of this gene is located on the long arm of chromosome 6. Alternatively spliced transcript variants encoding multiple isoforms have been observed for this gene. [provided by RefSeq, Dec 2010],
Function :	similarity:Contains 1 HORMA domain.,tissue specificity:Testis-specific. Over-expressed in carcinomas.,
Subcellular Location :	Nucleus . Chromosome . Preferentially localizes to unsynapsed or desynapsed chromosomal regions during the prophase I stage of meiosis. TRIP13 is required for depletion from synapsed chromosomes. The expression of the phosphorylated form at Ser-377 is restricted to unsynapsed chromosomal regions (By similarity). .
Expression :	Testis-specific. Over-expressed in carcinomas.
Sort :	7740
No4 :	1
Host :	Rabbit
Modifications :	Unmodified

Products Images



Western Blot analysis of various cells using HORMAD1 Polyclonal Antibody cells nucleus extracted by Minute TM Cytoplasmic and Nuclear Fractionation kit (SC-003, Inventbiotech, MN, USA).



Western blot analysis of lysates from HeLa, HUVEC, and COLO cells, using HORMAD1 Antibody. The lane on the right is blocked with the synthesized peptide.