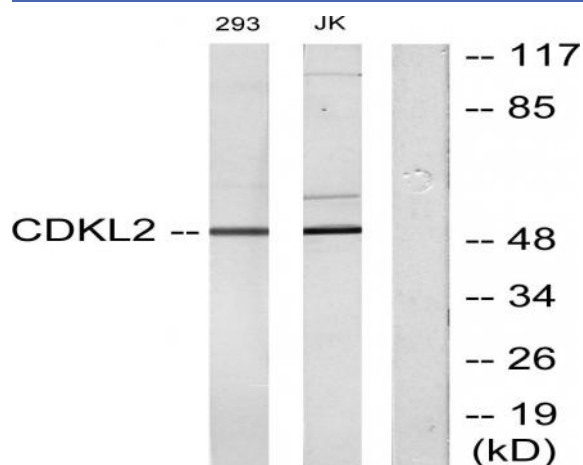


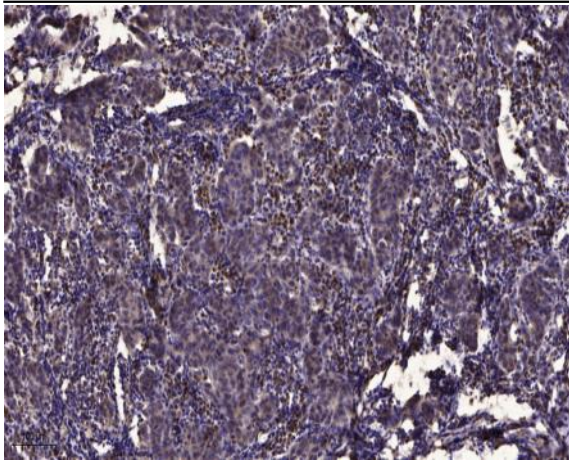
KKIAMRE Polyclonal Antibody

Catalog No :	YT2482
Reactivity :	Human;Rat;Mouse;
Applications :	WB;IHC;IF;ELISA
Target :	KKIAMRE
Gene Name :	CDKL2
Protein Name :	Cyclin-dependent kinase-like 2
Human Gene Id :	8999
Human Swiss Prot No :	Q92772
Mouse Swiss Prot No :	Q9QUK0
Immunogen :	The antiserum was produced against synthesized peptide derived from human CDKL2. AA range:211-260
Specificity :	KKIAMRE Polyclonal Antibody detects endogenous levels of KKIAMRE protein.
Formulation :	Liquid in PBS containing 50% glycerol, 0.5% BSA and 0.02% sodium azide.
Source :	Polyclonal, Rabbit,IgG
Dilution :	WB 1:500 - 1:2000. IHC 1:100 - 1:300. ELISA: 1:10000.. IF 1:50-200
Purification :	The antibody was affinity-purified from rabbit antiserum by affinity-chromatography using epitope-specific immunogen.
Concentration :	1 mg/ml
Storage Stability :	-15°C to -25°C/1 year(Do not lower than -25°C)
Observed Band :	56kD

Background :	This gene product is a member of a large family of CDC2-related serine/threonine protein kinases. It accumulates primarily in the cytoplasm, with lower levels in the nucleus. [provided by RefSeq, Jul 2008],
Function :	catalytic activity:ATP + a protein = ADP + a phosphoprotein.,domain:The [NKR]KIAxRE motif seems to be a cyclin-binding region.,similarity:Belongs to the protein kinase superfamily. CMGC Ser/Thr protein kinase family. CDC2/CDKX subfamily.,similarity:Contains 1 protein kinase domain.,tissue specificity:Expressed in testis and kidney, and at lower level in brain and lung.,
Subcellular Location :	Cytoplasm . Nucleus .
Expression :	Expressed in testis and kidney, and at lower level in brain and lung.
Sort :	8942
No4 :	1
Host :	Rabbit
Modifications :	Unmodified

Products Images





Immunohistochemical analysis of paraffin-embedded human Breast cancer. 1, Antibody was diluted at 1:200(4° overnight). 2, Tris-EDTA,pH9.0 was used for antigen retrieval. 3,Secondary antibody was diluted at 1:200(room temperature, 45min).