

KKIALRE Polyclonal Antibody

Catalog No :	YT2481
Reactivity :	Human;Rat
Applications :	WB;IHC;IF;ELISA
Target :	KKIALRE
Gene Name :	CDKL1
Protein Name :	Cyclin-dependent kinase-like 1
Human Gene Id :	8814
Human Swiss Prot No :	Q00532
Mouse Swiss Prot No :	Q8CEQ0
Rat Gene Id :	314198
Rat Swiss Prot No :	Q66HE7
Immunogen :	The antiserum was produced against synthesized peptide derived from human CDKL1. AA range:281-330
Specificity :	KKIALRE Polyclonal Antibody detects endogenous levels of KKIALRE protein.
Formulation :	Liquid in PBS containing 50% glycerol, 0.5% BSA and 0.02% sodium azide.
Source :	Polyclonal, Rabbit,IgG
Dilution :	WB 1:500 - 1:2000. IHC 1:100 - 1:300. ELISA: 1:10000.. IF 1:50-200
Purification :	The antibody was affinity-purified from rabbit antiserum by affinity-chromatography using epitope-specific immunogen.
Concentration :	1 mg/ml

Storage Stability : -15°C to -25°C/1 year(Do not lower than -25°C)

Observed Band : 42kD

Background : This gene product is a member of a large family of CDC2-related serine/threonine protein kinases. It accumulates primarily in the nucleus. Two transcript variants encoding different isoforms have been found for this gene. [provided by RefSeq, Aug 2013],

Function : catalytic activity:ATP + a protein = ADP + a phosphoprotein.,domain:The [NKR]KIAxRE motif seems to be a cyclin-binding region.,similarity:Belongs to the protein kinase superfamily.,similarity:Belongs to the protein kinase superfamily. CMGC Ser/Thr protein kinase family. CDC2/CDKX subfamily.,similarity:Contains 1 protein kinase domain.,tissue specificity:Highly expressed in kidney, and to a lower extent in ovary.,

Subcellular Location : Cytoplasm . Nucleus .

Expression : Highly expressed in kidney, and to a lower extent in ovary.

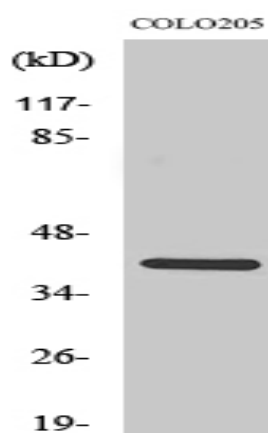
Sort : 8941

No4 : 1

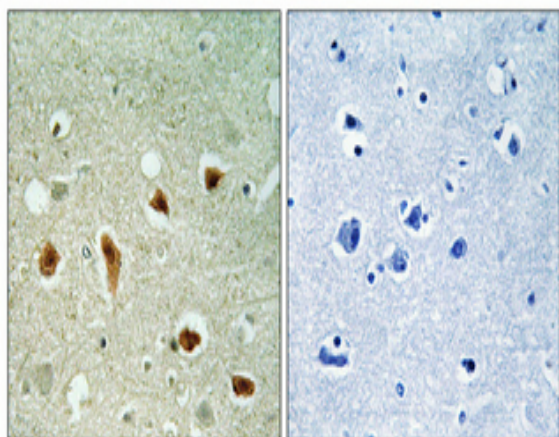
Host : Rabbit

Modifications : Unmodified

Products Images



Western Blot analysis of various cells using KKIALRE Polyclonal Antibody diluted at 1:500



Immunohistochemical analysis of paraffin-embedded Human brain. Antibody was diluted at 1:100(4° overnight). High-pressure and temperature Tris-EDTA,pH8.0 was used for antigen retrieval. Negative control (right) obtained from antibody was pre-absorbed by immunogen peptide.

