

KIAA0100 Polyclonal Antibody

Catalog No :	YT2468
Reactivity :	Human;Rat;Mouse;
Applications :	IHC;IF;ELISA
Target :	KIAA0100
Gene Name :	KIAA0100
Protein Name :	UPF0378 protein KIAA0100
Human Gene Id :	9703
Human Swiss Prot No :	Q14667
Mouse Swiss Prot No :	Q5SYL3
Immunogen :	The antiserum was produced against synthesized peptide derived from human KIAA0100. AA range:681-730
Specificity :	KIAA0100 Polyclonal Antibody detects endogenous levels of KIAA0100 protein.
Formulation :	Liquid in PBS containing 50% glycerol, 0.5% BSA and 0.02% sodium azide.
Source :	Polyclonal, Rabbit,IgG
Dilution :	IHC 1:100 - 1:300. IF 1:200 - 1:1000. ELISA: 1:20000. Not yet tested in other applications.
Purification :	The antibody was affinity-purified from rabbit antiserum by affinity-chromatography using epitope-specific immunogen.
Concentration :	1 mg/ml
Storage Stability :	-15°C to -25°C/1 year(Do not lower than -25°C)
Molecularweight :	254kD

Background : sequence caution:Contaminating sequence.,sequence caution:Sequencing errors.,similarity:Belongs to the UPF0378 family.,tissue specificity:Expressed in pancreas, placenta and up-regulated in breast carcinoma epithelial cells, ductal in situ carcinoma (DCIS), invasive breast carcinoma (IBC) and metastatic breast carcinoma cells (MET).,

Function : sequence caution:Contaminating sequence.,sequence caution:Sequencing errors.,similarity:Belongs to the UPF0378 family.,tissue specificity:Expressed in pancreas, placenta and up-regulated in breast carcinoma epithelial cells, ductal in situ carcinoma (DCIS), invasive breast carcinoma (IBC) and metastatic breast carcinoma cells (MET).,

Subcellular Location : Secreted .

Expression : Expressed in pancreas, placenta and up-regulated in breast carcinoma epithelial cells, ductal in situ carcinoma (DCIS), invasive breast carcinoma (IBC) and metastatic breast carcinoma cells (MET).

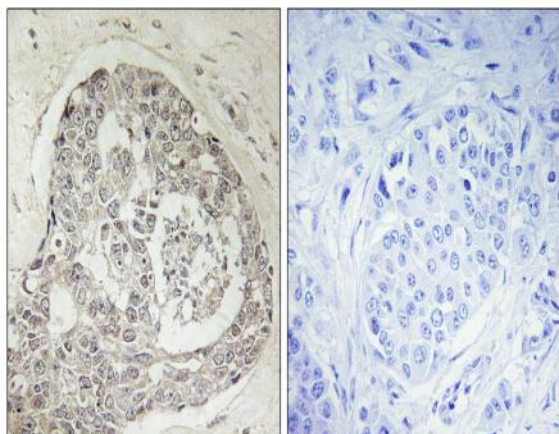
Sort : 8906

No4 : 1

Host : Rabbit

Modifications : Unmodified

Products Images



Immunohistochemistry analysis of paraffin-embedded human breast carcinoma, using K0100 Antibody. The picture on the right is blocked with the synthesized peptide.