

KEPI Polyclonal Antibody

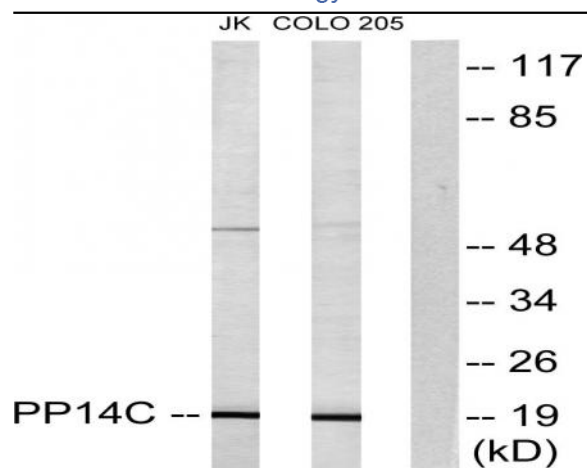
Catalog No :	YT2464
Reactivity :	Human;Mouse;Rat
Applications :	WB;IHC;IF;ELISA
Target :	KEPI
Gene Name :	PPP1R14C
Protein Name :	Protein phosphatase 1 regulatory subunit 14C
Human Gene Id :	81706
Human Swiss Prot No :	Q8TAE6
Mouse Gene Id :	76142
Mouse Swiss Prot No :	Q8R4S0
Rat Gene Id :	171010
Rat Swiss Prot No :	Q8R4R9
Immunogen :	The antiserum was produced against synthesized peptide derived from human PPP1R14C. AA range:51-100
Specificity :	KEPI Polyclonal Antibody detects endogenous levels of KEPI protein.
Formulation :	Liquid in PBS containing 50% glycerol, 0.5% BSA and 0.02% sodium azide.
Source :	Polyclonal, Rabbit,IgG
Dilution :	WB 1:500 - 1:2000. IHC 1:100 - 1:300. IF 1:200 - 1:1000. ELISA: 1:20000. Not yet tested in other applications.
Purification :	The antibody was affinity-purified from rabbit antiserum by affinity-chromatography using epitope-specific immunogen.

Concentration :	1 mg/ml
Storage Stability :	-15°C to -25°C/1 year(Do not lower than -25°C)
Observed Band :	20kD
Background :	The degree of protein phosphorylation is regulated by a balance of protein kinase and phosphatase activities. Protein phosphatase-1 (PP1; see MIM 176875) is a signal-transducing phosphatase that influences neuronal activity, protein synthesis, metabolism, muscle contraction, and cell division. PPP1R14C is an inhibitor of PP1 (Liu et al., 2002 [PubMed 11812771]).[supplied by OMIM, Feb 2010],
Function :	function:Inhibitor of PPP1CA. Has over 600-fold higher inhibitory activity when phosphorylated, creating a molecular switch for regulating the phosphorylation status of PPP1CA substrates and smooth muscle contraction.,similarity:Belongs to the PP1 inhibitor family.,tissue specificity:Detected in breast cancer.,
Subcellular Location :	Cytoplasm . Membrane ; Peripheral membrane protein .
Expression :	Detected in breast cancer.
Sort :	8883
No4 :	1
Host :	Rabbit
Modifications :	Unmodified

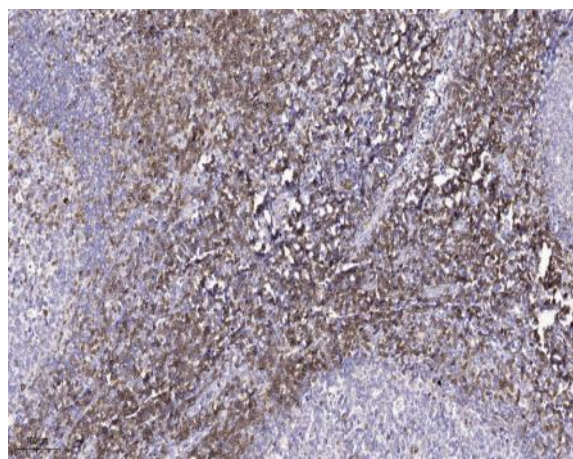
Products Images



Western Blot analysis of various cells using KEPI Polyclonal Antibody diluted at 1:1000



Western blot analysis of lysates from Jurkat and COLO205 cells, using PPP1R14C Antibody. The lane on the right is blocked with the synthesized peptide.



Immunohistochemical analysis of paraffin-embedded human tonsil. 1, Tris-EDTA, pH 9.0 was used for antigen retrieval. 2 Antibody was diluted at 1:200 (4° overnight). 3, Secondary antibody was diluted at 1:200 (room temperature, 45min).